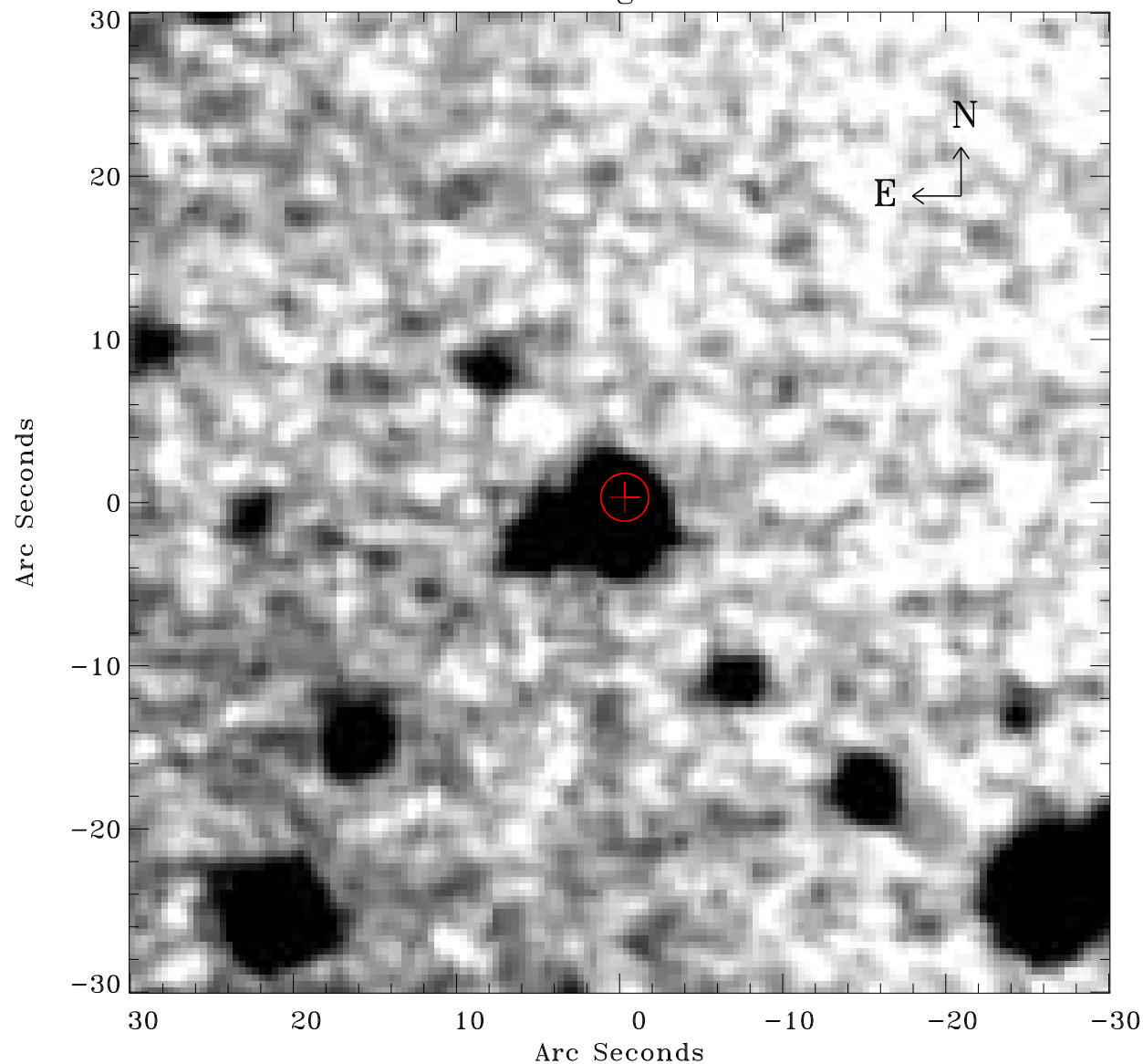


# EPIC source finding chart ACDS V10.0



Principal Investigator :

Dr Albert Brinkman

XMM target name :

Gamma2 Velorum

OBS ID : 112670201

Source number : 55

X-ray coordinates :

$\alpha$  : 08 08 51.13

$\delta$  : -47 16 06.3

Center coordinates :

$\alpha$  : 08 08 51.12

$\delta$  : -47 16 06.3

Plate reference :

Origin : CDS HIPs Network

Plate : MAMA srcj

Pixel : 0.40 "/pix

Error circle :

$R_{90}$  (") : 1.4

XMM SSC

Apr 20 11:36:38 2019