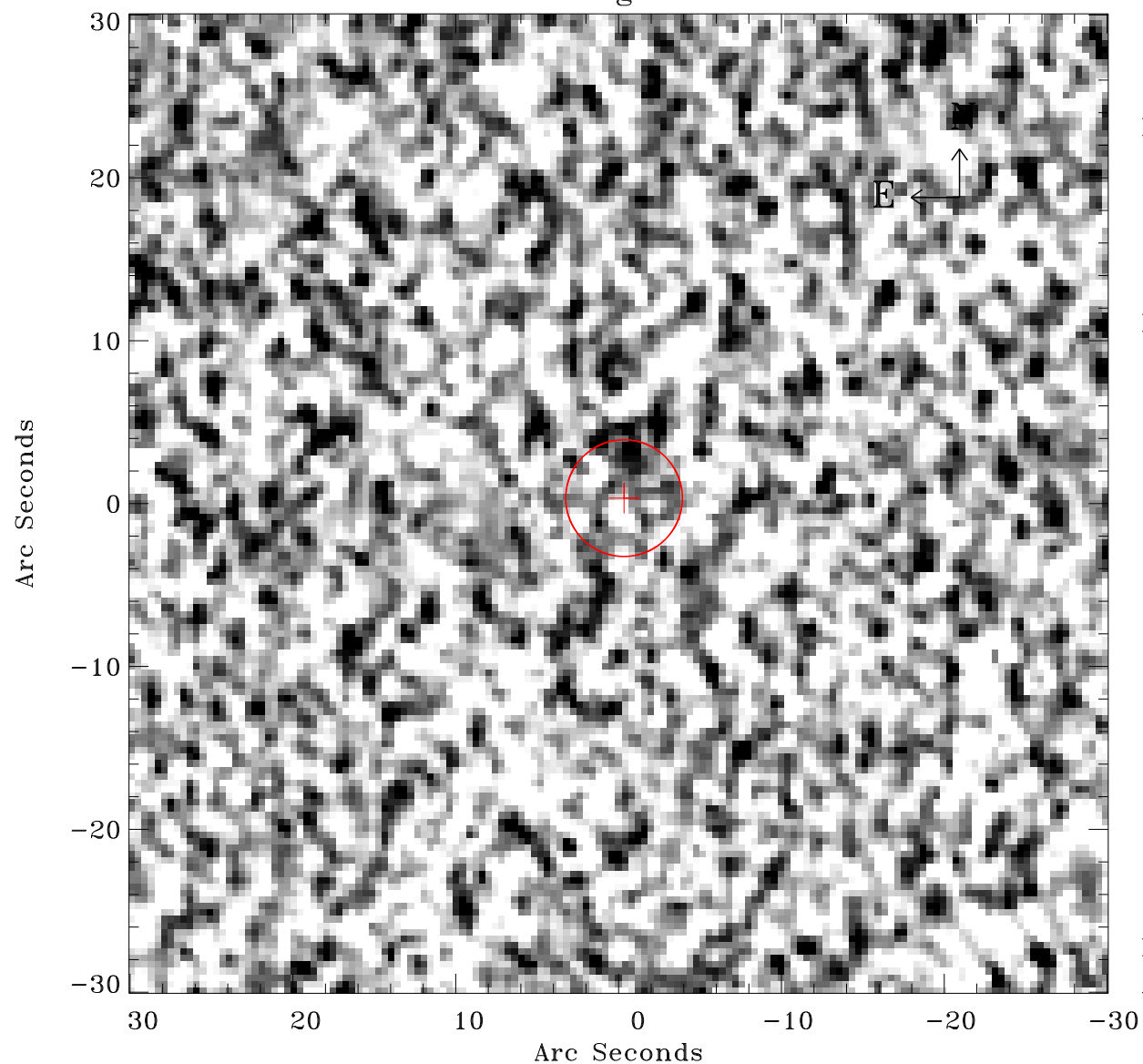


# EPIC source finding chart ACDS V10.0



Principal Investigator :

Dr Albert Brinkman

XMM target name :

Gamma2 Velorum

OBS ID : 112670201

Source number : 94

X-ray coordinates :

$\alpha$  : 08 09 19.03

$\delta$  : -47 22 47.5

Center coordinates :

$\alpha$  : 08 09 19.02

$\delta$  : -47 22 47.5

Plate reference :

Origin : CDS HIPs Network

Plate : MAMA srcj

Pixel : 0.40 "/pix

Error circle :

$R_{90}$  (") : 3.6

XMM SSC

Apr 20 11:46:15 2019