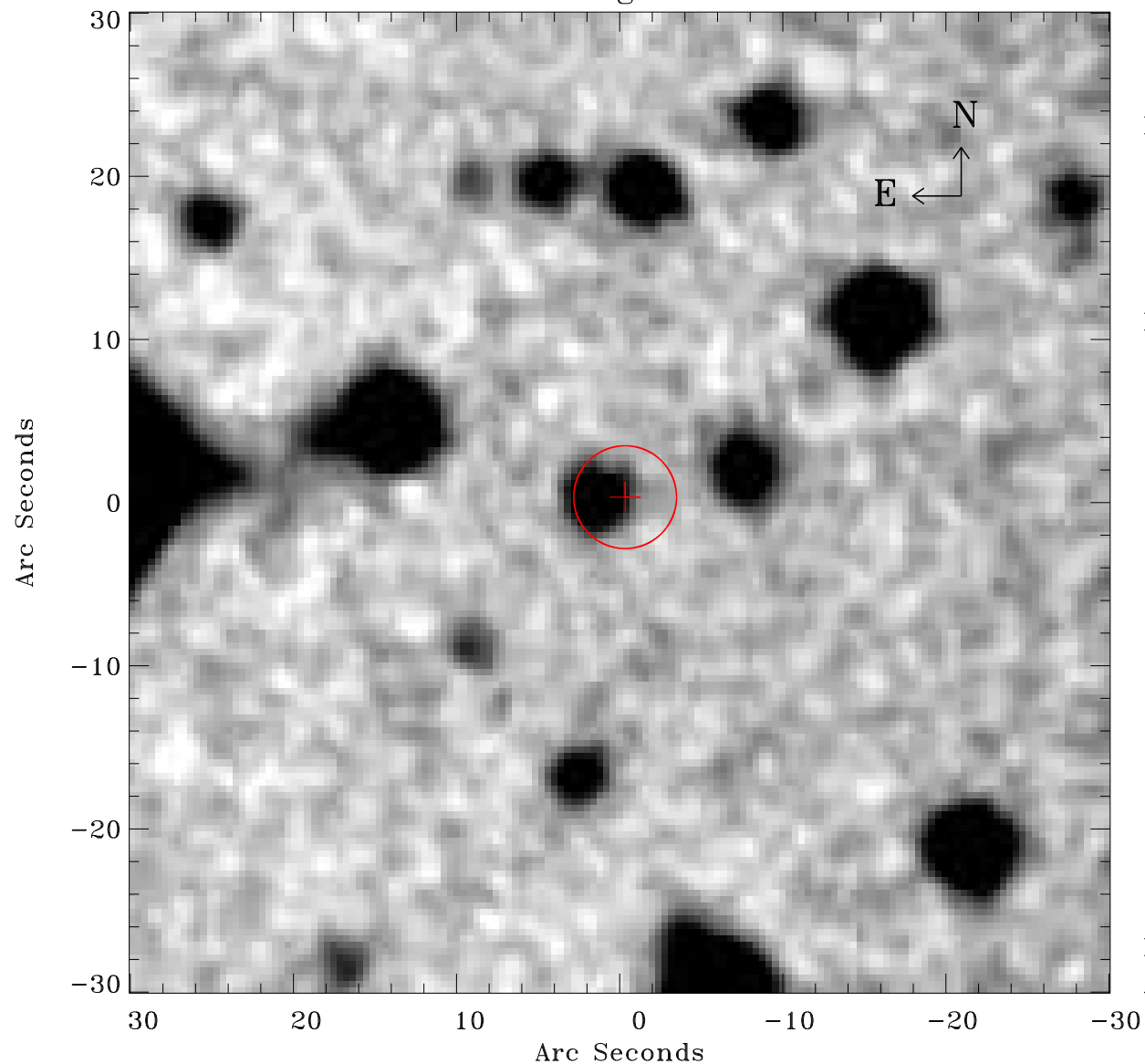


# EPIC source finding chart ACDS V10.0



Principal Investigator :

Dr Albert Brinkman

XMM target name :

Gamma2 Velorum

OBS ID : 112670201

Source number : 114

X-ray coordinates :

$\alpha$  : 08 10 41.09

$\delta$  : -47 27 57.6

Center coordinates :

$\alpha$  : 08 10 41.08

$\delta$  : -47 27 57.5

Plate reference :

Origin : CDS HIPs Network

Plate : MAMA srcj

Pixel : 0.40 "/pix

Error circle :

$R_{90}$  (") : 3.1

XMM SSC

Apr 20 11:48:25 2019