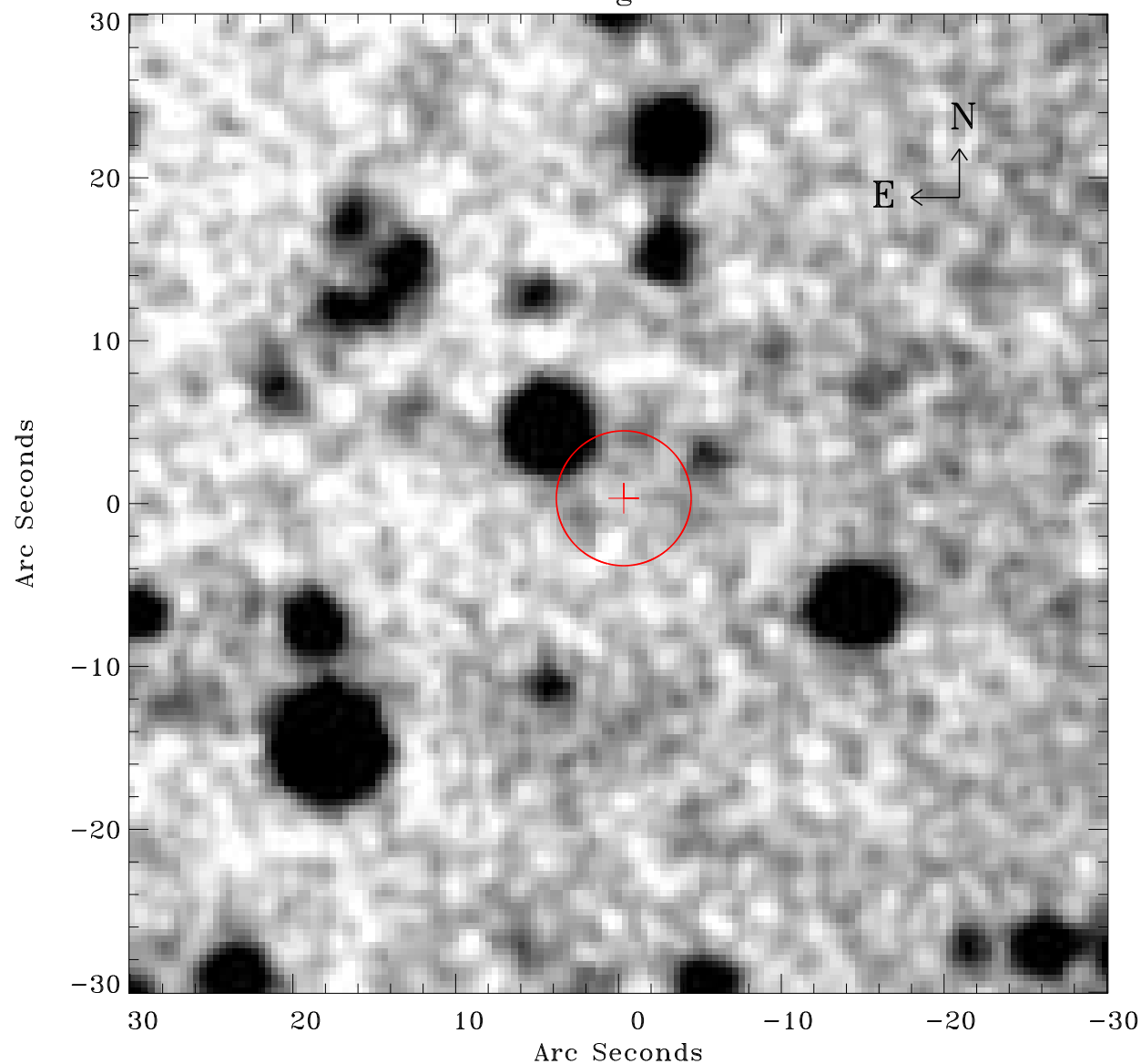


# EPIC source finding chart ACDS V10.0



Principal Investigator :

Dr Albert Brinkman

XMM target name :

Gamma2 Velorum

OBS ID : 112670201

Source number : 128

X-ray coordinates :

$\alpha$  : 08 10 44.14

$\delta$  : -47 27 10.1

Center coordinates :

$\alpha$  : 08 10 44.13

$\delta$  : -47 27 10.0

Plate reference :

Origin : CDS HIPs Network

Plate : MAMA srcj

Pixel : 0.40 "/pix

Error circle :

$R_{90}$  (") : 4.1

XMM SSC

Apr 20 11:48:28 2019