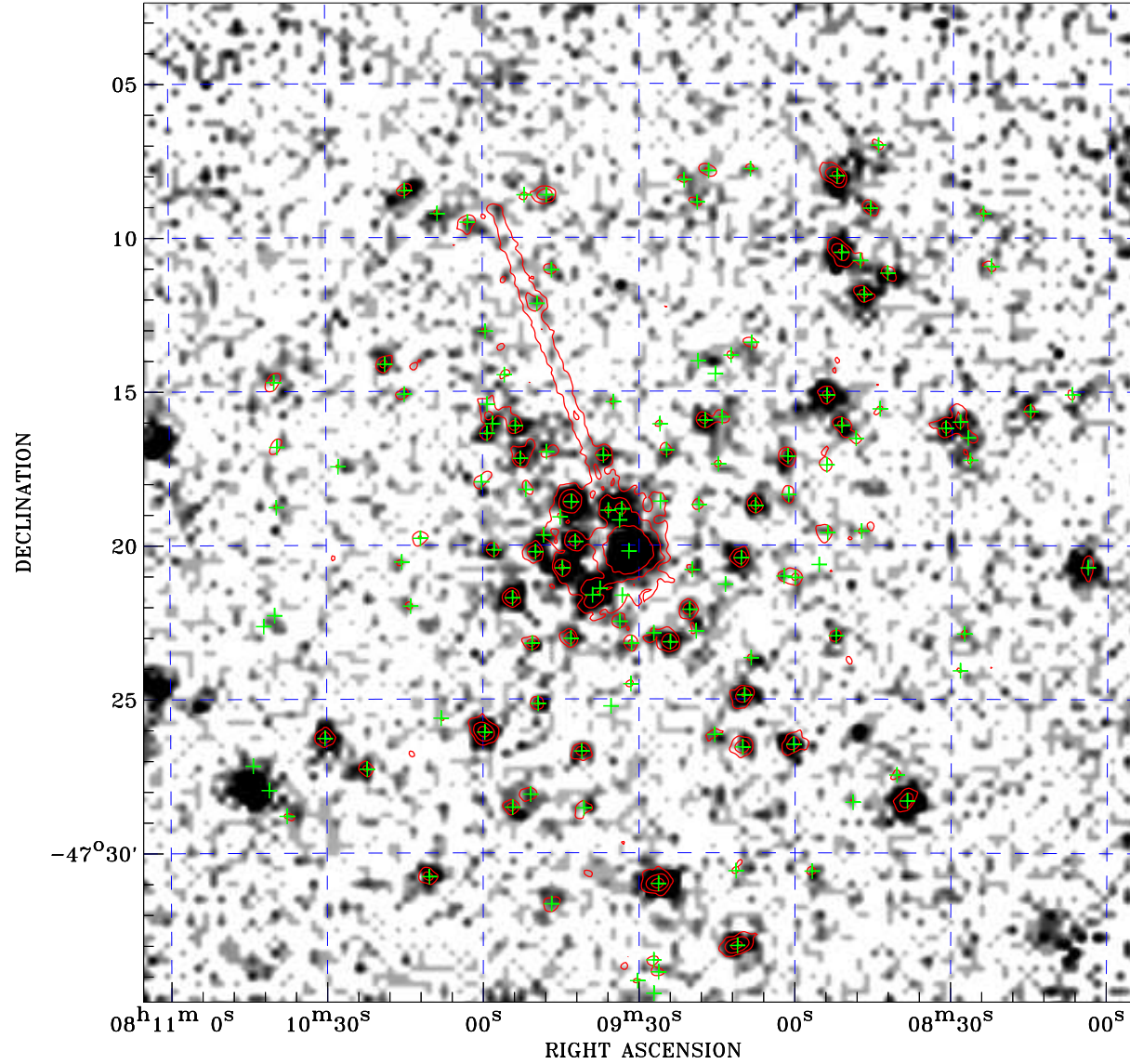



# PDF XMM ROSAT image ACDS V10.0



ROSAT image gray scale (Log) :  
  
 $\langle 8.573\text{E}-05$   $\rangle 6.874\text{E}-04$   
 (counts s<sup>-1</sup>)

⊙ Epic image contour  
 levels at 2, 7 and 30 $\sigma$

+ Detected Epic sources

Principal Investigator :  
 Dr Albert Brinkman

XMM target name :  
 Gamma2 Velorum

Observation ID :  
 0112670201

Epic image :  
 $\alpha$  : 08 09 29.20  
 $\delta$  : -47 18 37.3  
 Energy band : 0.2–12.0 keV  
 MOS1 : 11827 s  
 MOS2 : 11905 s  
 PN : 8831 s

Contour levels (counts) :  
 2 $\sigma$  :1.241E+00 7 $\sigma$  :3.377E+00  
 30 $\sigma$  :1.320E+01

Nearest ROSAT image  
 from Epic image center :  
 Observation : 180017p  
 Instrument : PSPCB  
 $\alpha$  : 08 09 48.95  
 $\delta$  : -47 23 24.2

Other ROSAT images :  
 None

XMM SSC  
 Apr 20 11:33:32 2019