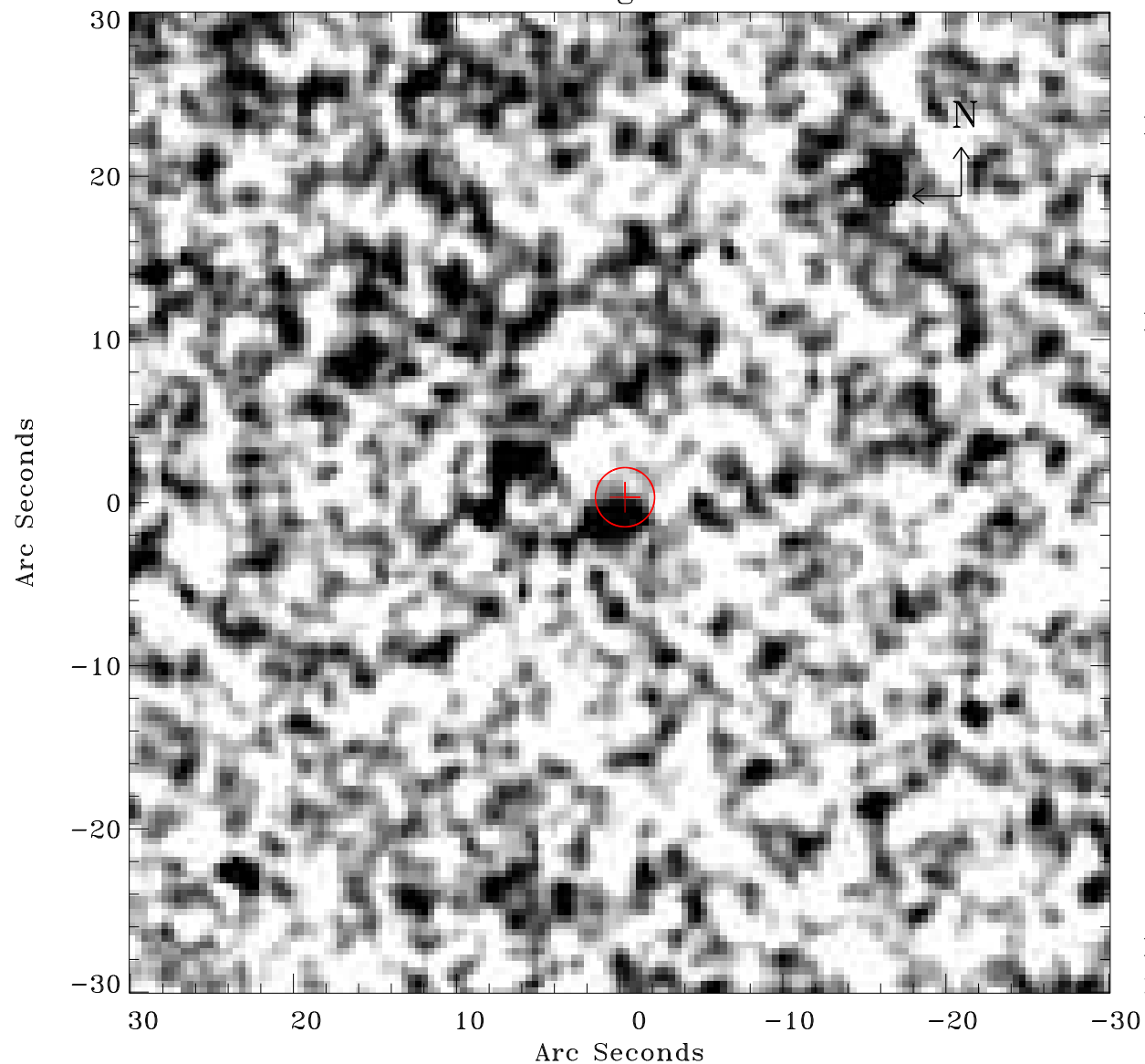


# EPIC source finding chart ACDS V10.0



Principal Investigator :

Dr Martin Turner

XMM target name :

NGC 300

OBS ID : 112800201

Source number : 62

X-ray coordinates :

$\alpha$  : 00 54 47.20

$\delta$  : -37 49 13.7

Center coordinates :

$\alpha$  : 00 54 47.19

$\delta$  : -37 49 13.7

Plate reference :

Origin : CDS HIPs Network

Plate : MAMA srcj

Pixel : 0.40 "/pix

Error circle :

$R_{90}$  (") : 1.8

XMM SSC

May 1 18:32:31 2019