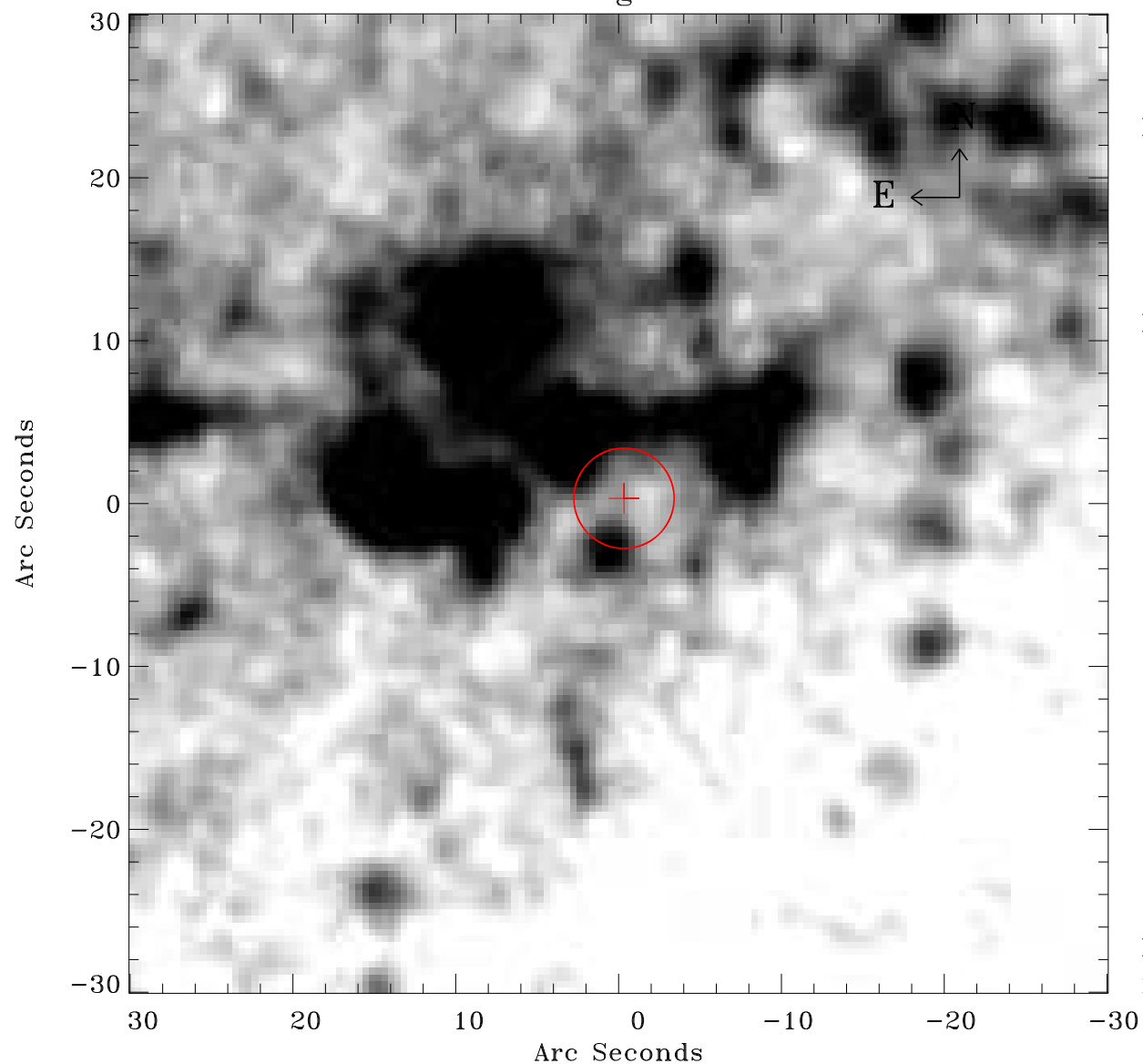


# EPIC source finding chart ACDS V10.0



Principal Investigator :

Dr Martin Turner

XMM target name :

NGC 300

OBS ID : 112800201

Source number : 111

X-ray coordinates :

$\alpha$  : 00 54 42.12

$\delta$  : -37 43 10.9

Center coordinates :

$\alpha$  : 00 54 42.11

$\delta$  : -37 43 10.9

Plate reference :

Origin : CDS HIPs Network

Plate : MAMA srcj

Pixel : 0.40 "/pix

Error circle :

$R_{90}$  (") : 3.1

XMM SSC

May 1 18:32:15 2019