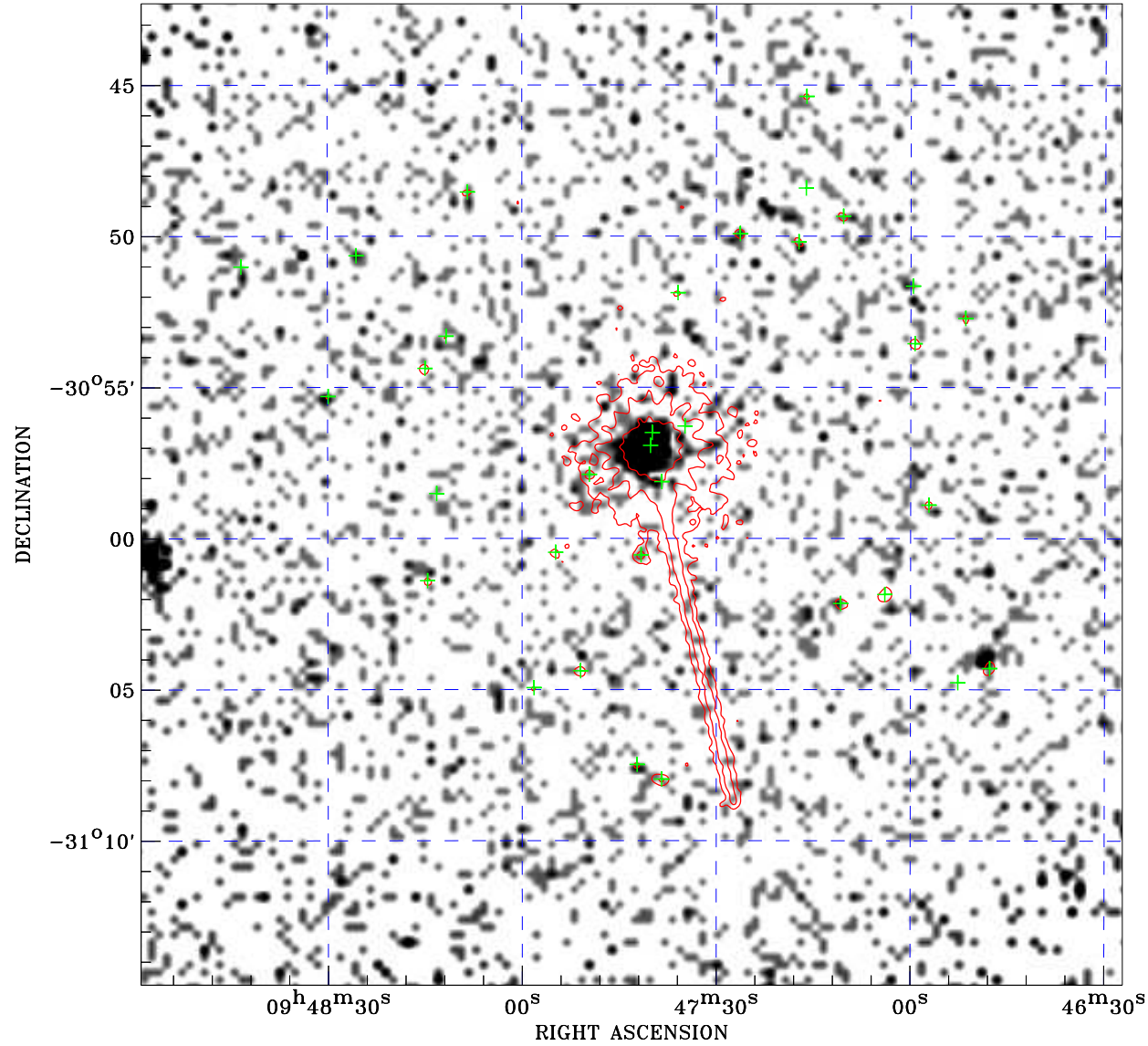


PDF XMM ROSAT image ACDS V10.0



Principal Investigator :
Prof RICHARD GRIFFITHS

XMM target name :
MCG-5-23-16

Observation ID :
0112830301


Epic image :
 α : 09 47 43.07
 δ : -30 58 33.0
 Energy band : 0.2-12.0 keV
 MOS1 : 9529 s
 MOS2 : 10049 s
 PN : 6700 s

Contour levels (counts) :
 2σ :1.351E+00 7σ :3.902E+00
 30σ :1.564E+01

Nearest ROSAT image
from Epic image center :
 Observation : 700334p
 Instrument : PSPCB
 α : 09 47 54.82
 δ : -31 00 00.2

Other ROSAT images :
None

XMM SSC
Apr 26 15:21:52 2019

ROSAT image gray scale (Log) :

 $\langle 6.989\text{E}-05$ $\rangle 5.506\text{E}-04$
 (counts s⁻¹)

⊙ Epic image contour
levels at 2, 7 and 30 σ

+ Detected Epic sources