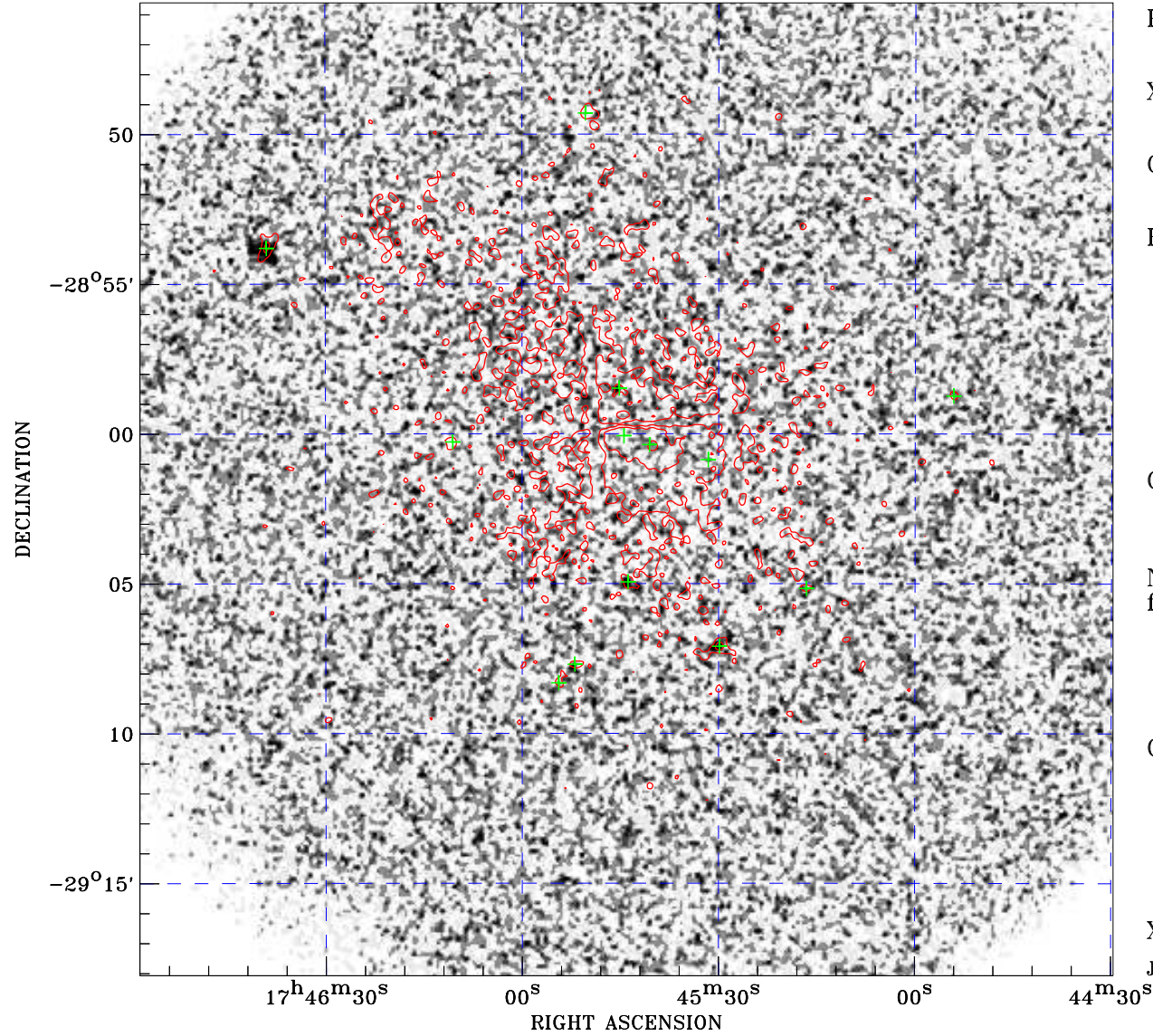


# PDF XMM ROSAT image ACDS V10.0



ROSAT image gray scale (Log) :  
[A grayscale bar representing the intensity range]  
< 3.282E-05 > 1.670E-04  
(counts s<sup>-1</sup>)

⊙ Epic image contour  
levels at 2, 7 and 30 $\sigma$

+ Detected Epic sources

Principal Investigator :  
Dr Martin Turner

XMM target name :  
GC6

Observation ID :  
0112970601

Epic image :  
 $\alpha$  : 17 45 44.07  
 $\delta$  : -29 01 51.3  
Energy band : 0.2–12.0 keV  
MOS1 : 0 s  
MOS2 : 0 s  
PN : 1967 s

Contour levels (counts) :  
2 $\sigma$  :9.173E-01 7 $\sigma$  :2.123E+00  
30 $\sigma$  :7.670E+00

Nearest ROSAT image  
from Epic image center :  
Observation : 600026h  
Instrument : HRI  
 $\alpha$  : 17 45 48.10  
 $\delta$  : -29 01 36.2

Other ROSAT images :  
None

XMM SSC  
Jan 21 16:36:55 2025