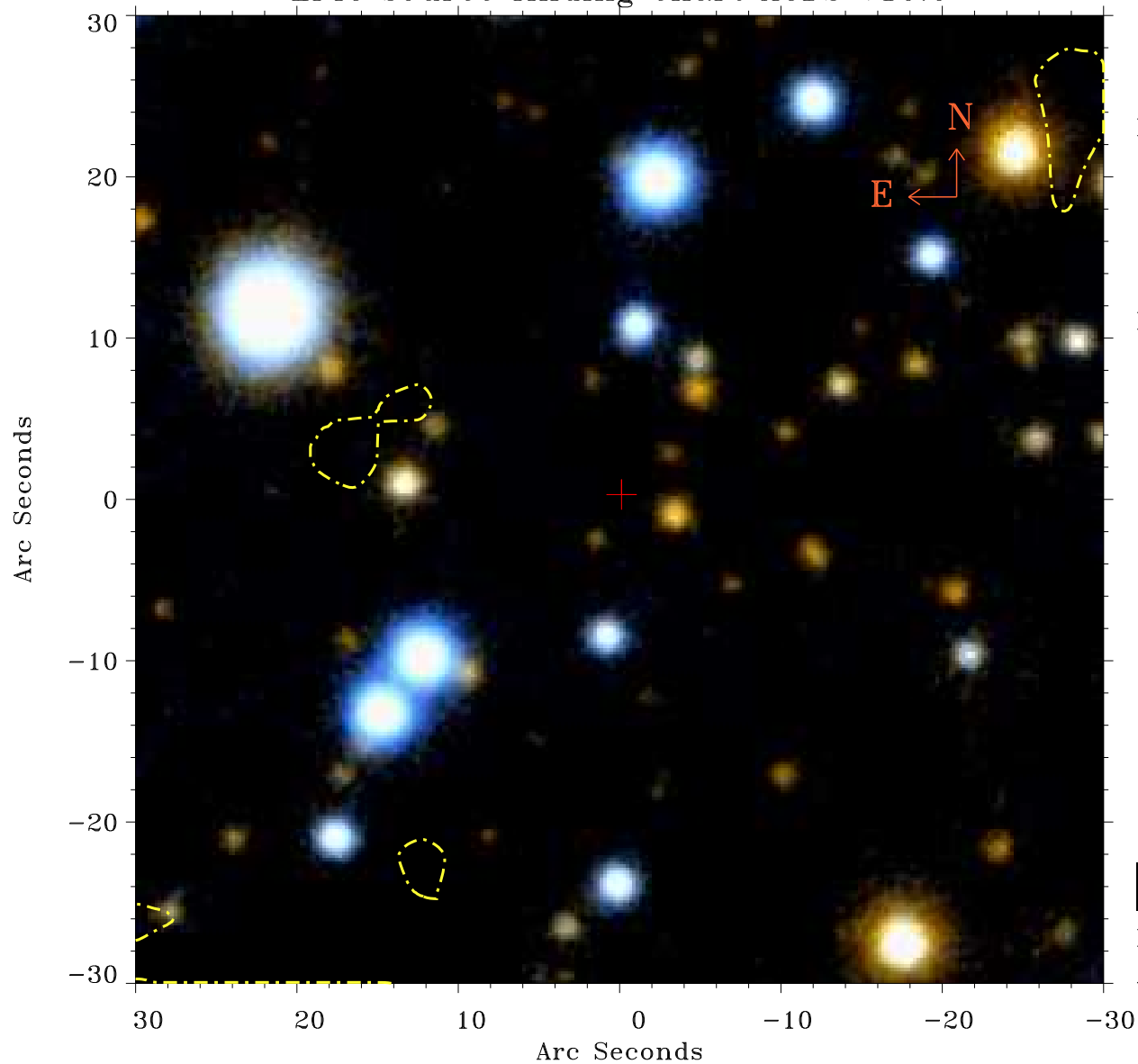


# EPIC source finding chart ACDS V10.0



Principal Investigator :  
Dr Martin Turner

XMM target name :  
GC6

OBS ID : 112971601  
Source number : 2

X-ray coordinates :  
 $\alpha$  : 17 45 44.73  
 $\delta$  : -28 59 58.9

Center coordinates :  
 $\alpha$  : 17 45 44.72  
 $\delta$  : -28 59 59.0

Plate reference :  
Origin : PanSTARRS-DR1

Color coding :  
z band ●  
(z+g)/2 ●  
g band ●

Contour levels (counts) :  
1.00E+00 1.57E+01  
6.19E+01 1.41E+02

XMM SSC  
Apr 21 08:26:47 2019