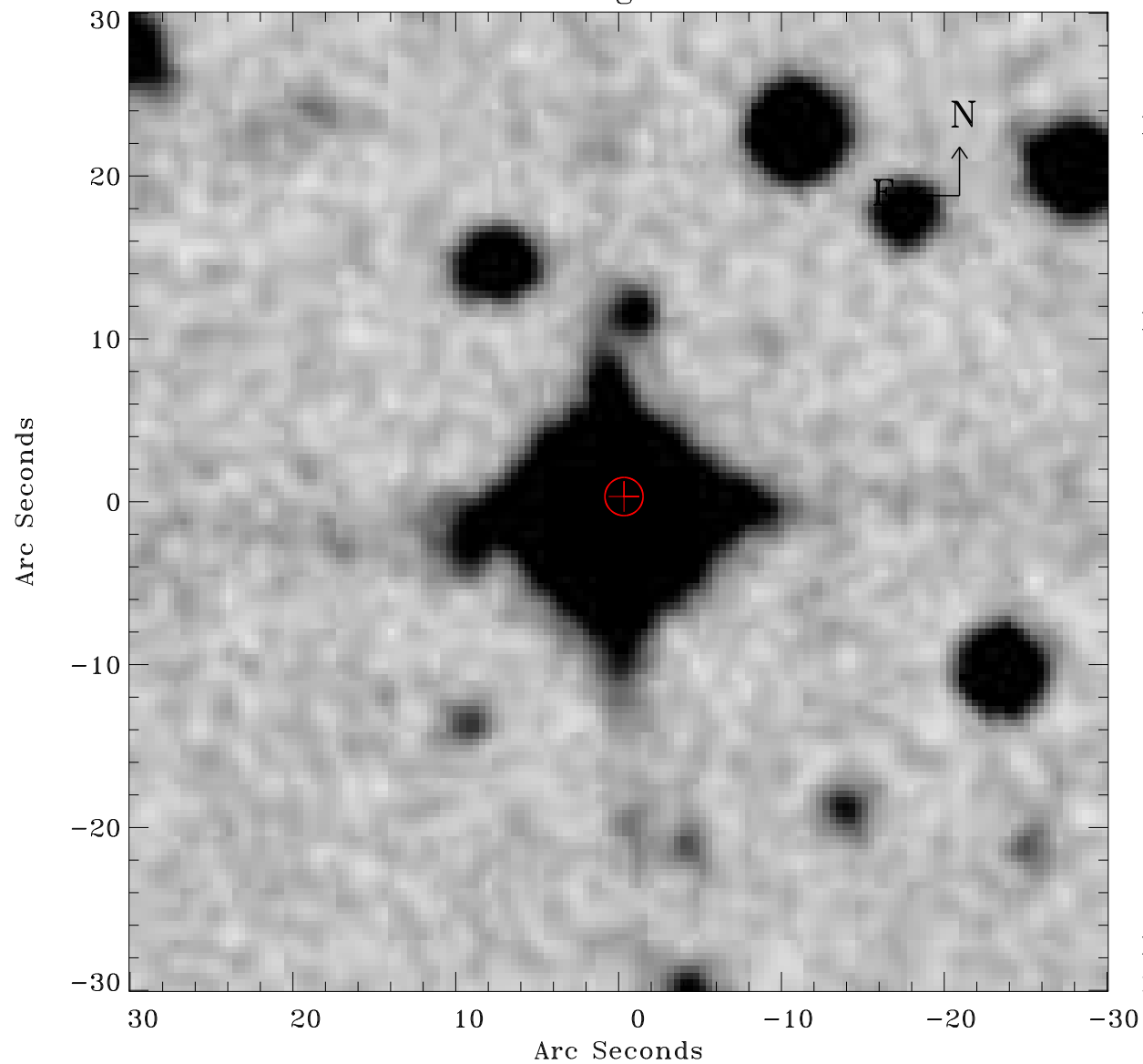


# EPIC source finding chart ACDS V10.0



Principal Investigator :

Dr Fabio Favata

XMM target name :

V851 Cen

OBS ID : 140350101

Source number : 2

X-ray coordinates :

$\alpha$  : 13 45 13.25

$\delta$  : -61 28 13.4

Center coordinates :

$\alpha$  : 13 45 13.24

$\delta$  : -61 28 13.3

Plate reference :

Origin : CDS HIPs Network

Plate : MAMA srcj

Pixel : 0.40 "/pix

Error circle :

$R_{90}$  (") : 1.2

XMM SSC

May 2 00:26:26 2019