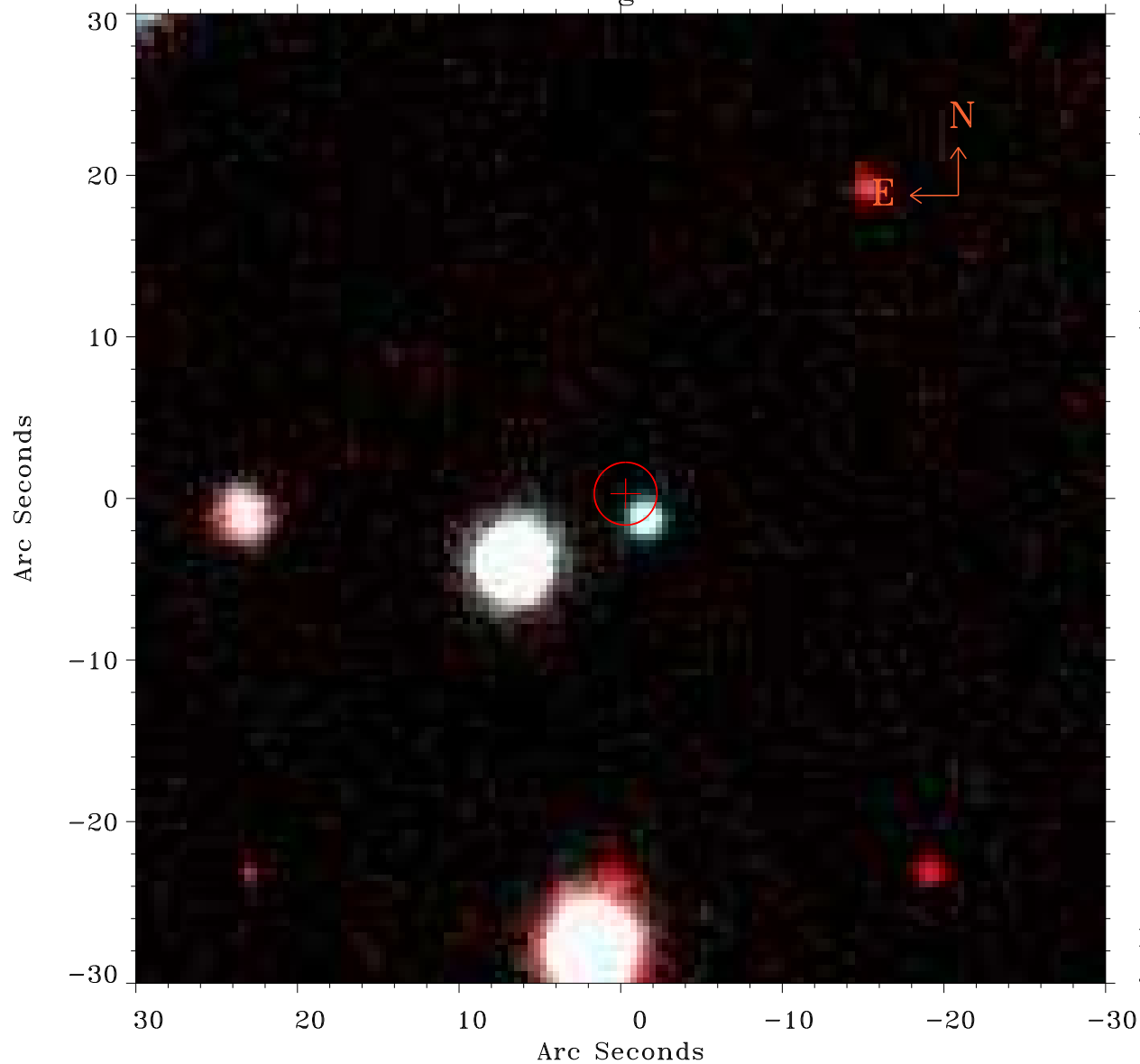


# EPIC source finding chart ACDS V10.0



Principal Investigator :

Dr Matteo Guainazzi

XMM target name :

NGC3393

OBS ID : 140950601

Source number : 10

X-ray coordinates :

$\alpha$  : 10 48 42.89

$\delta$  : -25 21 32.9

Center coordinates :

$\alpha$  : 10 48 42.88

$\delta$  : -25 21 32.8

Plate reference :

Origin : PanSTARRS-DR1

Color coding :

z band ●

(z+g)/2 ●

g band ●

Error:

R90 : 1.9 arsec

XMM SSC

Jan 20 08:38:59 2025