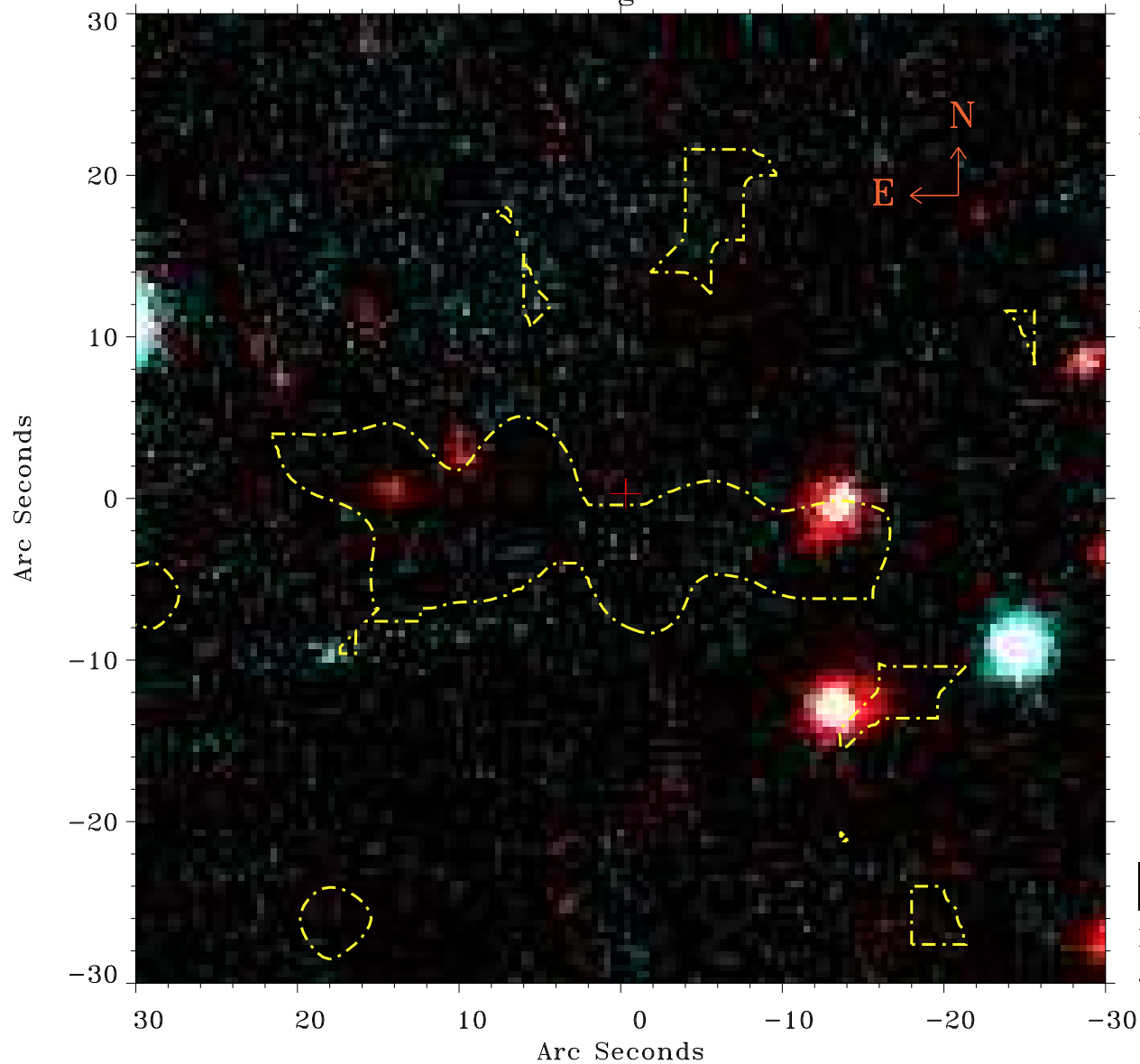


# EPIC source finding chart ACDS V10.0



Principal Investigator :

Dr Matteo Guainazzi

XMM target name :

NGC3393

OBS ID : 140950601

Source number : 57

X-ray coordinates :

$\alpha$  : 10 48 37.19

$\delta$  : -25 02 11.7

Center coordinates :

$\alpha$  : 10 48 37.19

$\delta$  : -25 02 11.6

Plate reference :

Origin : PanSTARRS-DR1

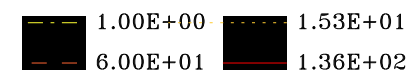
Color coding :

z band ●

(z+g)/2 ●

g band ●

Contour levels (counts) :



XMM SSC

Jan 20 08:38:14 2025