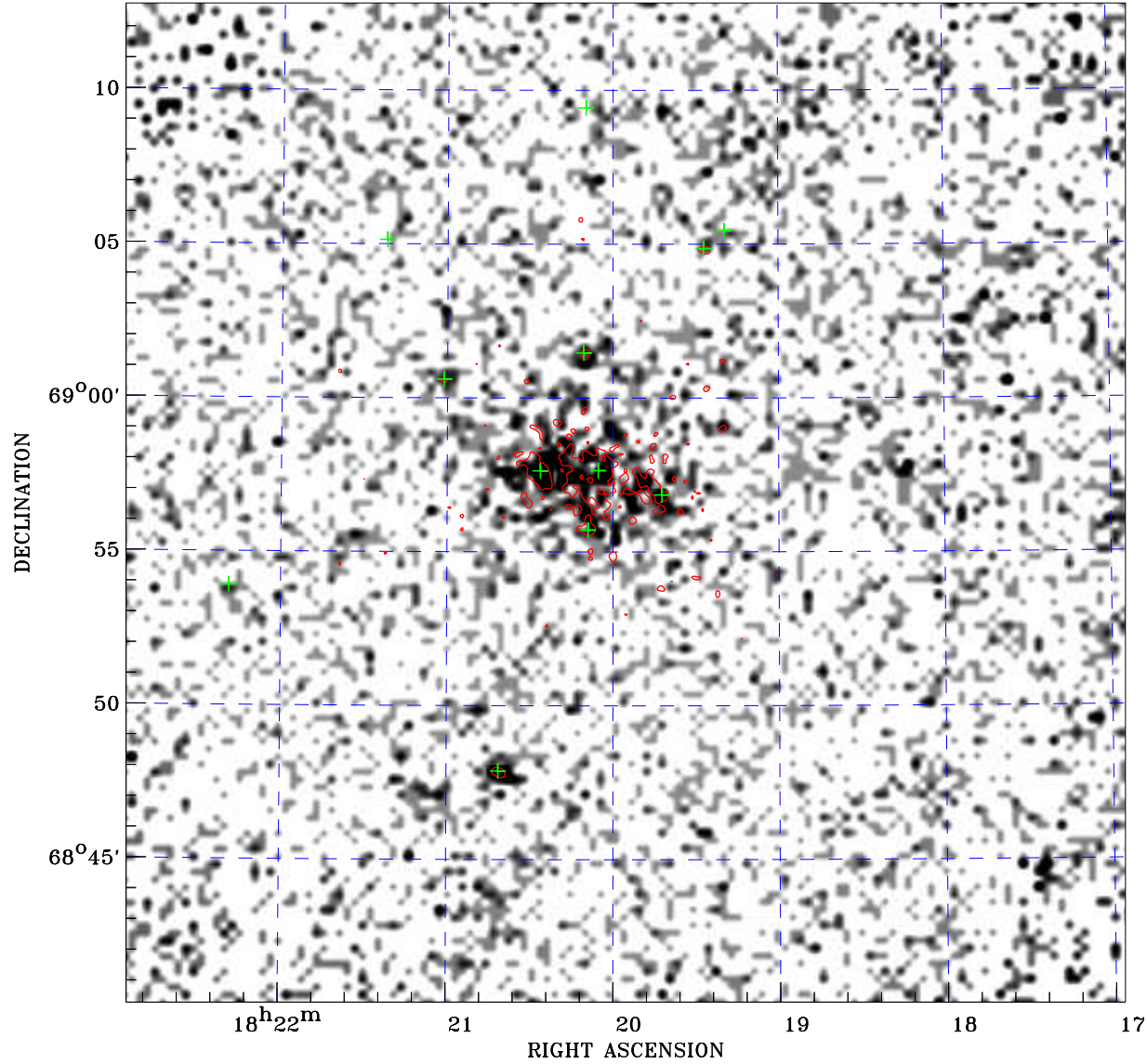
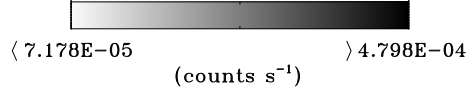


# PDF XMM ROSAT image ACDS V10.0



ROSAT image gray scale (Log) :



⊙ Epic image contour  
levels at 2, 7 and 30 $\sigma$

+ Detected Epic sources

Principal Investigator :  
Prof Patrick Henry

XMM target name :  
A2304

Observation ID :  
0141160601

Epic image :  
 $\alpha$  : 18 19 55.39  
 $\delta$  : +68 56 36.5  
Energy band : 0.2–12.0 keV  
MOS1 : 3328 s  
MOS2 : 3250 s  
PN : 2741 s

Contour levels (counts) :  
2 $\sigma$  :3.307E+00 7 $\sigma$  :7.683E+00  
30 $\sigma$  2.781E+01

Nearest ROSAT image  
from Epic image center :  
Observation : 800498p  
Instrument : PSPCB  
 $\alpha$  : 18 20 14.18  
 $\delta$  : +68 53 59.0

Other ROSAT images :  
None

XMM SSC  
Apr 21 21:22:12 2019