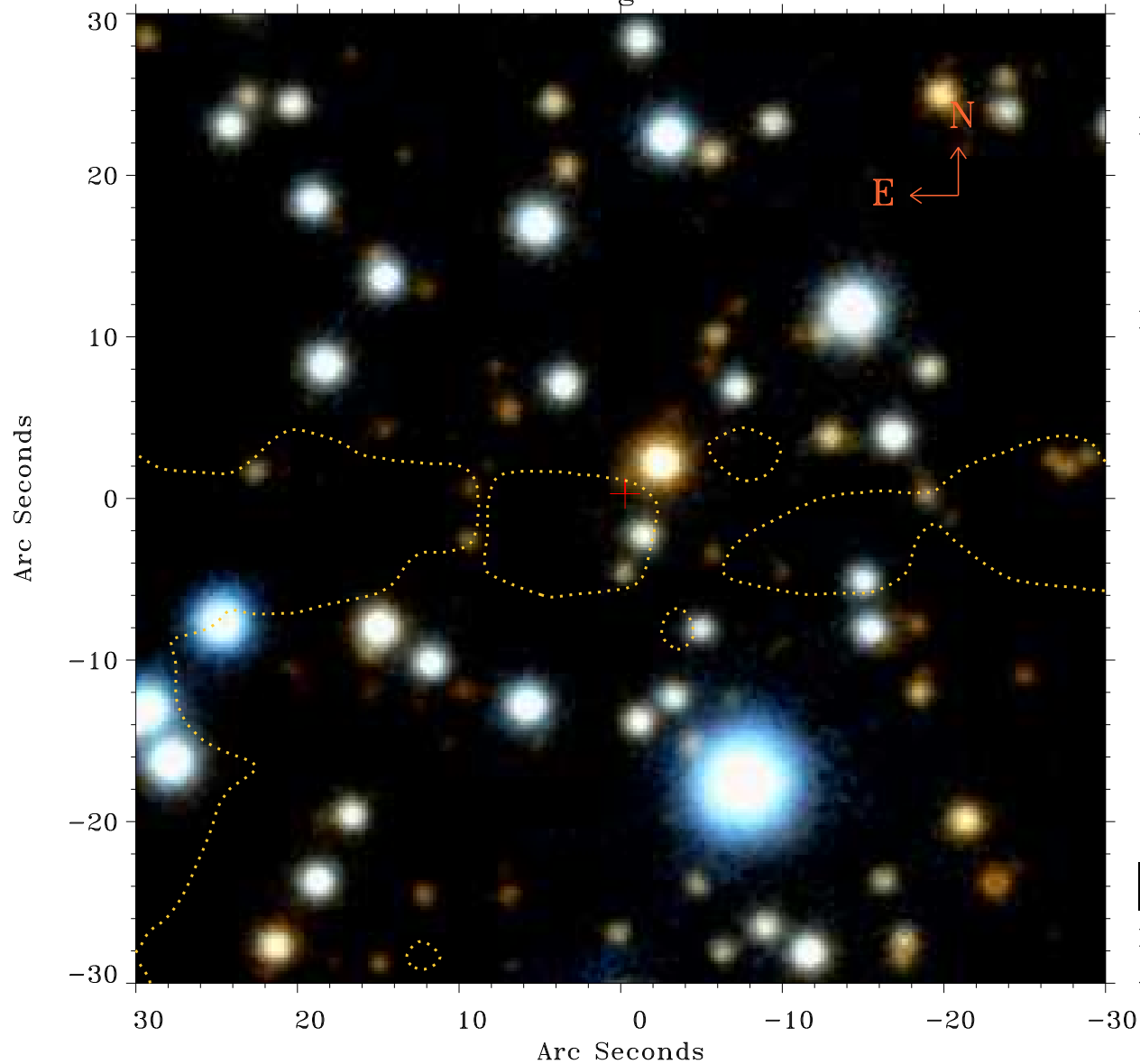


EPIC source finding chart ACDS V10.0



Principal Investigator :

Prof Katsuji Koyama

XMM target name :

W28 east shell

OBS ID : 145970401

Source number : 4

X-ray coordinates :

α : 18 01 46.83

δ : -23 17 13.3

Center coordinates :

α : 18 01 46.84

δ : -23 17 13.4

Plate reference :

Origin : PanSTARRS-DR1

Color coding :

z band



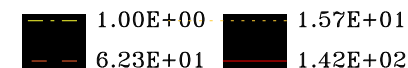
(z+g)/2



g band



Contour levels (counts) :



XMM SSC

Apr 30 12:11:40 2019