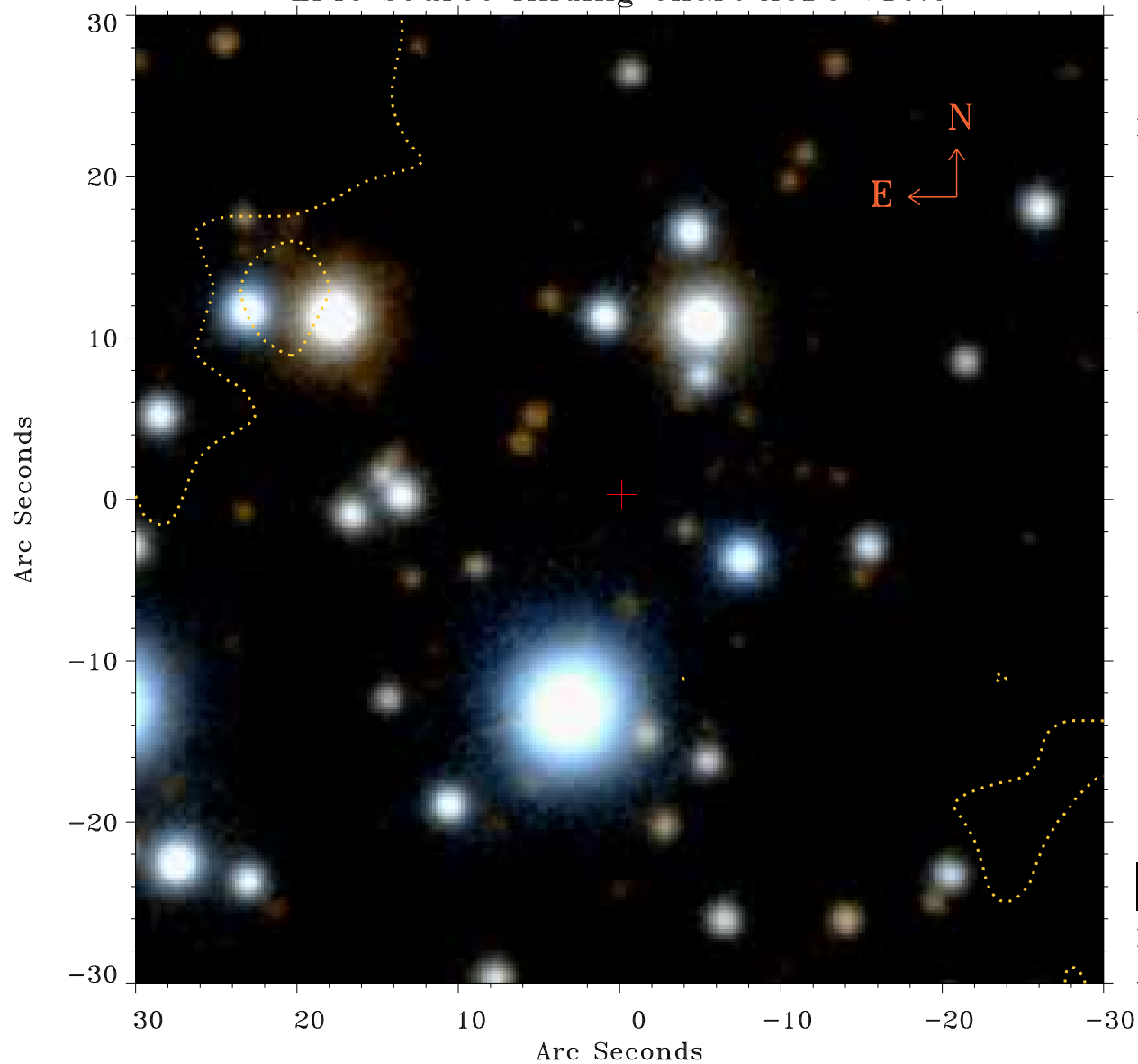


# EPIC source finding chart ACDS V10.0



Principal Investigator :  
Prof Katsuji Koyama

XMM target name :  
W28 east shell

OBS ID : 145970401  
Source number : 7

X-ray coordinates :  
 $\alpha$  : 18 01 49.77  
 $\delta$  : -23 19 34.8

Center coordinates :  
 $\alpha$  : 18 01 49.76  
 $\delta$  : -23 19 34.9

Plate reference :  
Origin : PanSTARRS-DR1

Color coding :  
z band ●  
(z+g)/2 ●  
g band ●

Contour levels (counts) :  
1.00E+00 1.57E+01  
6.25E+01 1.43E+02

XMM SSC  
Apr 30 12:12:28 2019