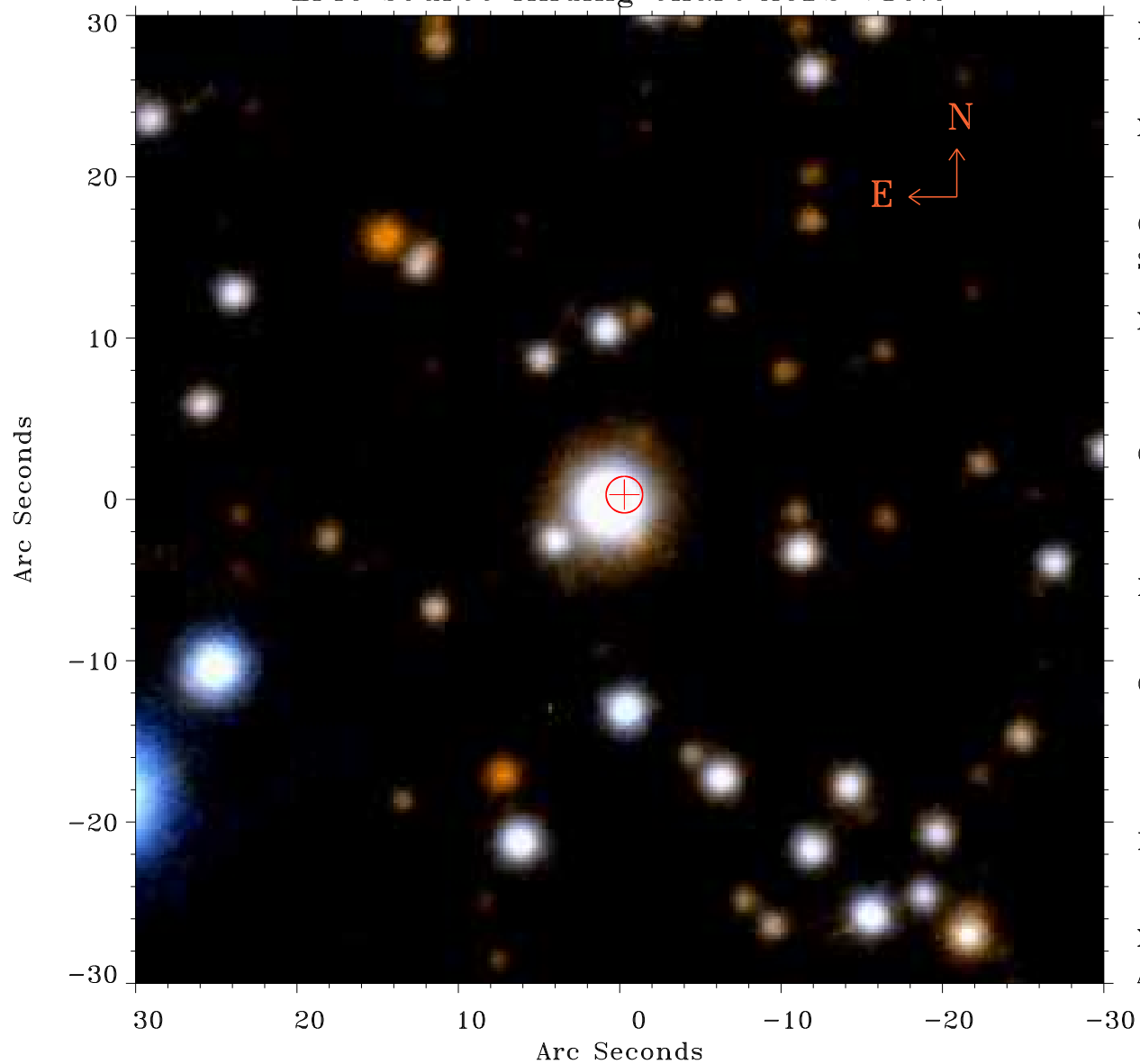


EPIC source finding chart ACDS V10.0



Principal Investigator :

Prof Katsuji Koyama

XMM target name :

W28 east shell

OBS ID : 145970401

Source number : 10

X-ray coordinates :

α : 18 01 20.10

δ : -23 13 00.8

Center coordinates :

α : 18 01 20.11

δ : -23 13 00.9

Plate reference :

Origin : PanSTARRS-DR1

Color coding :

z band (red dot)

(z+g)/2 (green dot)

g band (blue dot)

Error:

R90 : 1.1 arsec

XMM SSC

Apr 30 12:02:19 2019