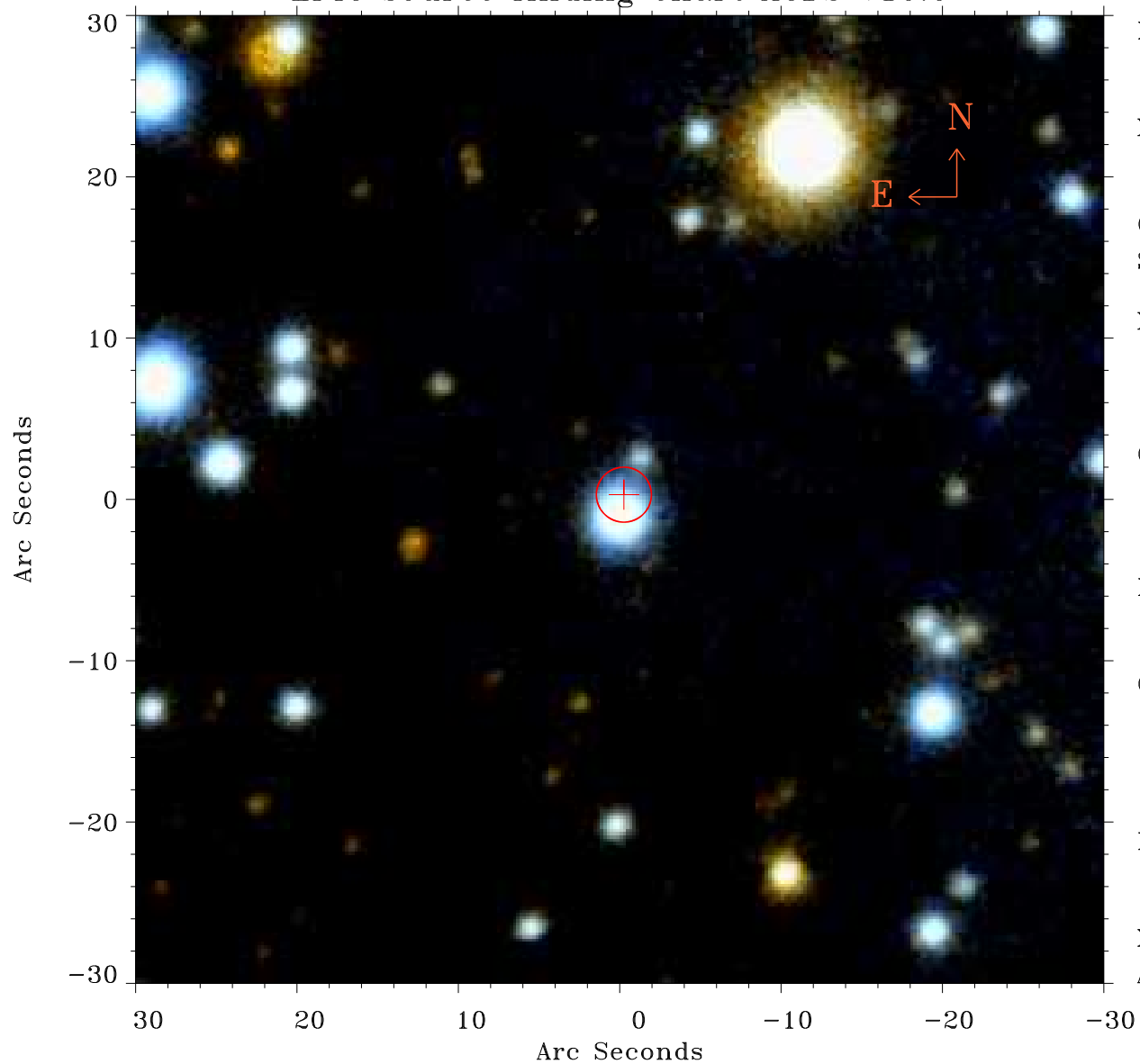


# EPIC source finding chart ACDS V10.0



Principal Investigator :

Prof Katsuji Koyama

XMM target name :

W28 east shell

OBS ID : 145970401

Source number : 24

X-ray coordinates :

$\alpha$  : 18 02 42.45

$\delta$  : -23 15 05.4

Center coordinates :

$\alpha$  : 18 02 42.46

$\delta$  : -23 15 05.5

Plate reference :

Origin : PanSTARRS-DR1

Color coding :

z band ●

(z+g)/2 ●

g band ●

Error:

R90 : 1.7 arcsec

XMM SSC

Apr 30 12:35:40 2019