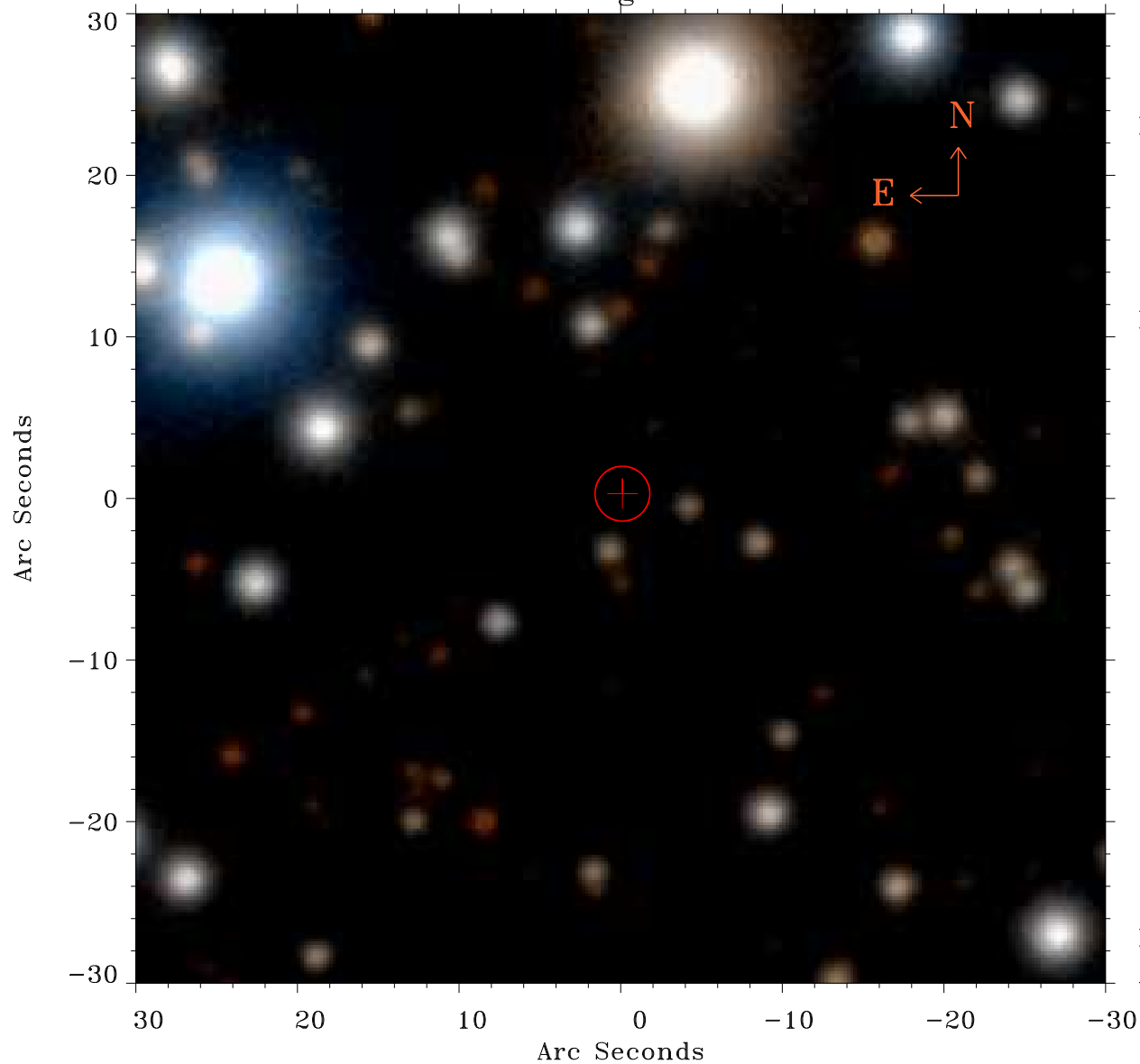


# EPIC source finding chart ACDS V10.0



Principal Investigator :  
Prof Katsuji Koyama

XMM target name :  
W28 east shell

OBS ID : 145970401  
Source number : 40

X-ray coordinates :  
 $\alpha$  : 18 01 03.29  
 $\delta$  : -23 18 22.4

Center coordinates :  
 $\alpha$  : 18 01 03.28  
 $\delta$  : -23 18 22.5

Plate reference :  
Origin : PanSTARRS-DR1

Color coding :  
z band ●  
(z+g)/2 ●  
g band ●

Error:  
R90 : 1.7 arcsec

XMM SSC  
Apr 30 12:00:25 2019