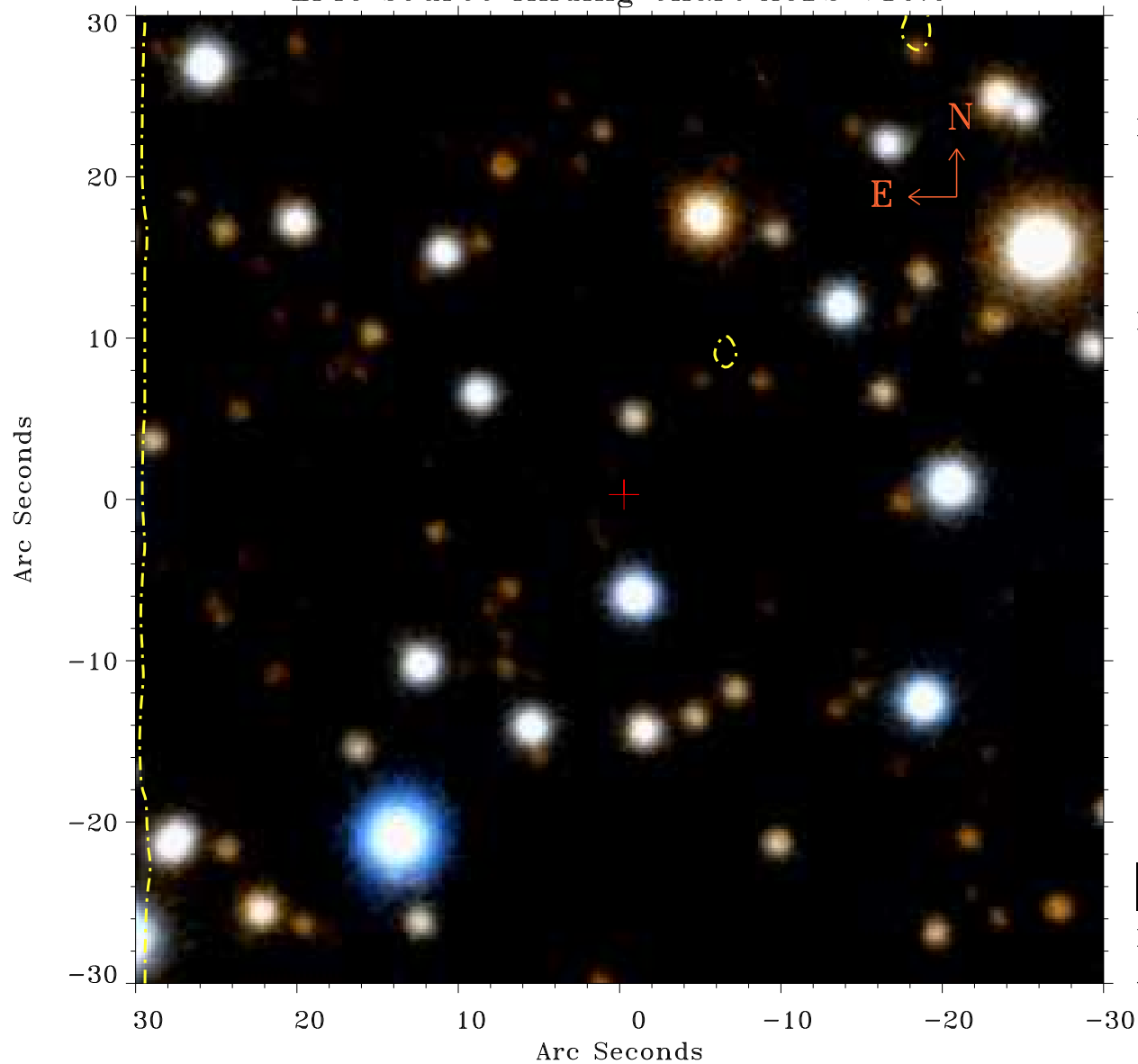


# EPIC source finding chart ACDS V10.0



Principal Investigator :

Prof Katsuji Koyama

XMM target name :

W28 east shell

OBS ID : 145970401

Source number : 62

X-ray coordinates :

$\alpha$  : 18 01 05.57

$\delta$  : -23 10 46.4

Center coordinates :

$\alpha$  : 18 01 05.58

$\delta$  : -23 10 46.5

Plate reference :

Origin : PanSTARRS-DR1

Color coding :

z band ●

(z+g)/2 ●

g band ●

Contour levels (counts) :



XMM SSC

Apr 30 12:00:45 2019