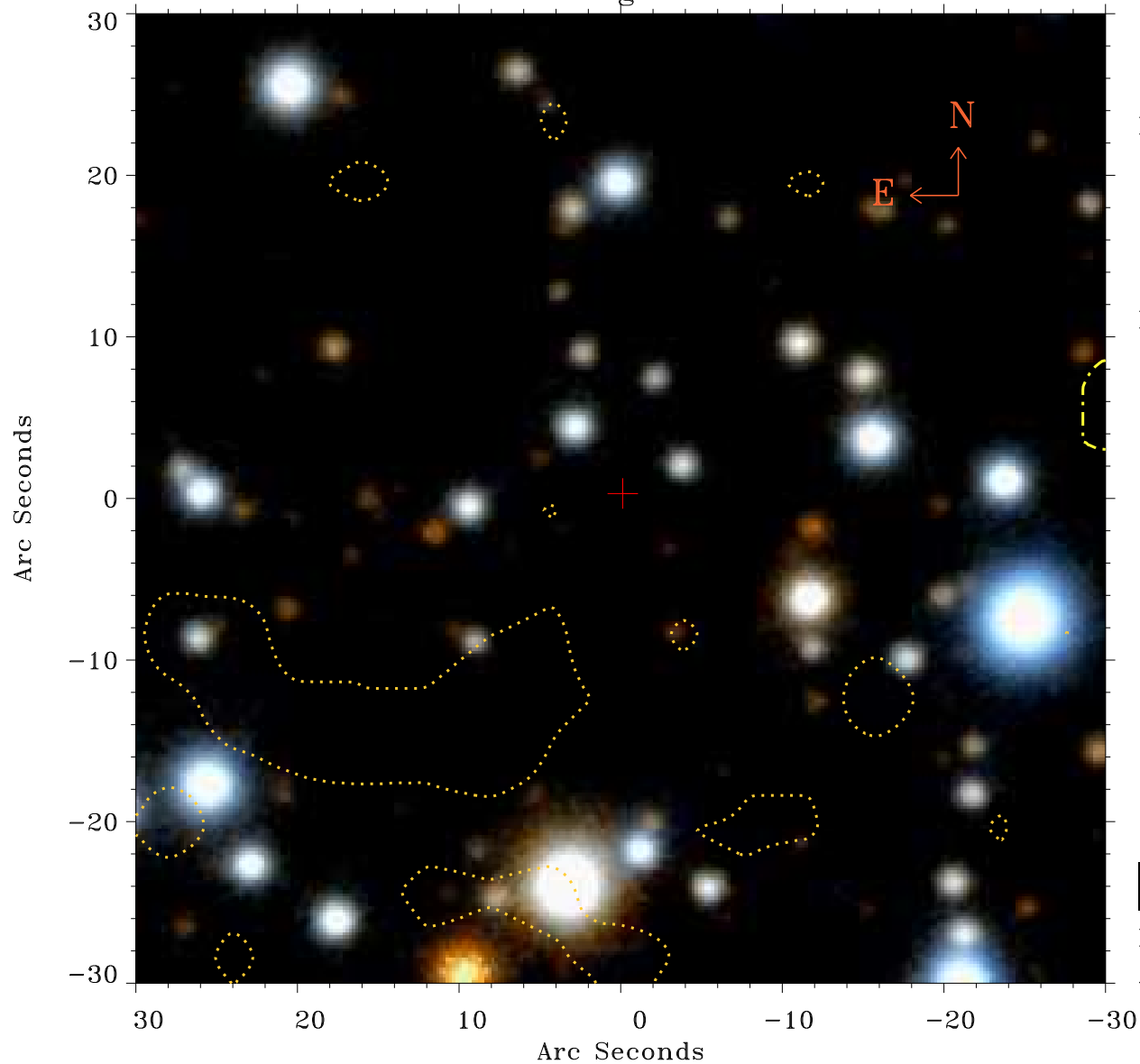


EPIC source finding chart ACDS V10.0



Principal Investigator :

Prof Katsuji Koyama

XMM target name :

W28 east shell

OBS ID : 145970401

Source number : 64

X-ray coordinates :

α : 18 01 23.34

δ : -23 17 21.3

Center coordinates :

α : 18 01 23.34

δ : -23 17 21.4

Plate reference :

Origin : PanSTARRS-DR1

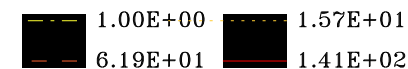
Color coding :

z band ●

(z+g)/2 ●

g band ●

Contour levels (counts) :



XMM SSC

Apr 30 12:03:11 2019