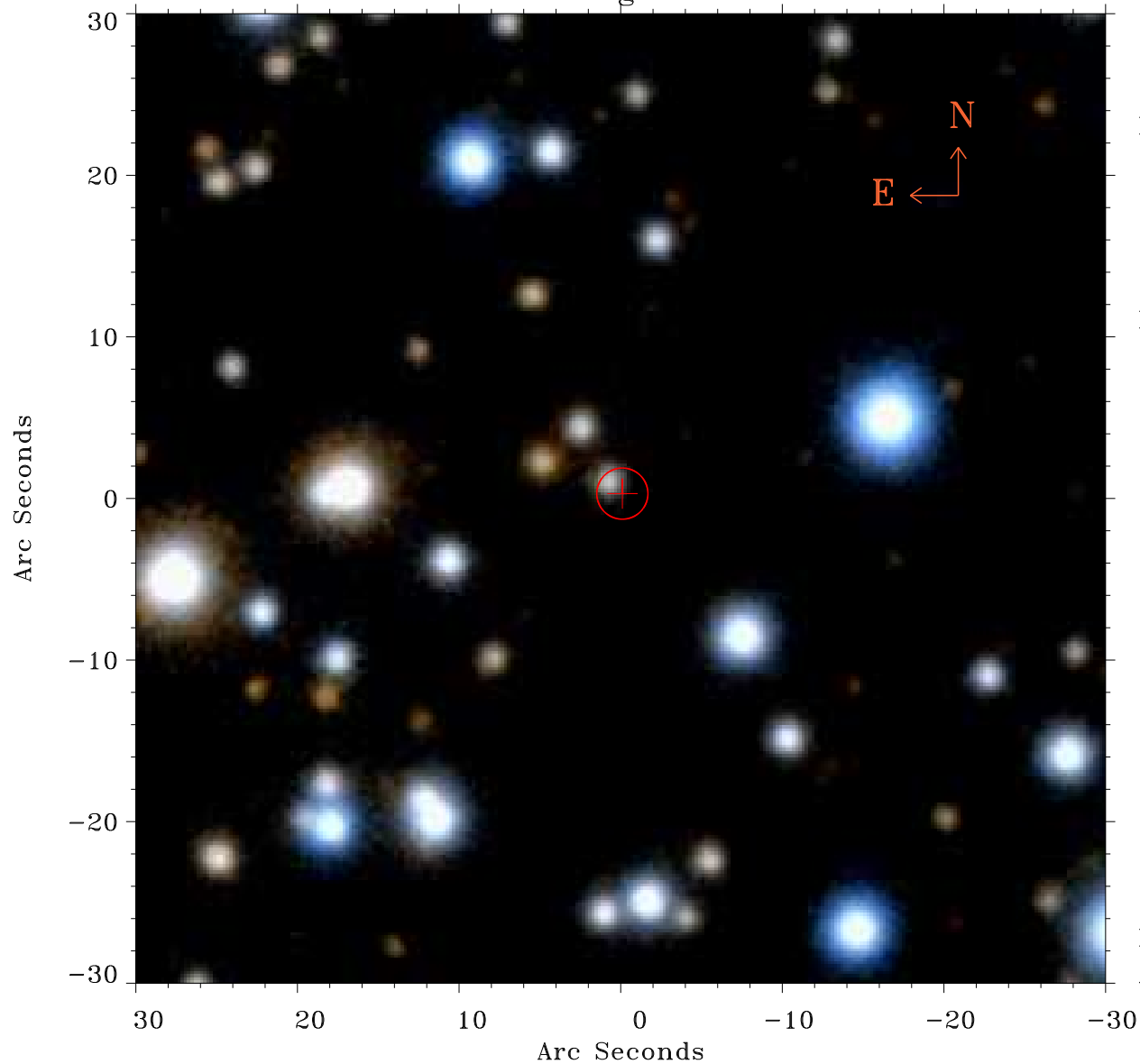


EPIC source finding chart ACDS V10.0



Principal Investigator :

Prof Katsuji Koyama

XMM target name :

W28 east shell

OBS ID : 145970401

Source number : 66

X-ray coordinates :

α : 18 02 00.56

δ : -23 25 57.8

Center coordinates :

α : 18 02 00.55

δ : -23 25 57.9

Plate reference :

Origin : PanSTARRS-DR1

Color coding :

z band ●

(z+g)/2 ●

g band ●

Error:

R90 : 1.6 arcsec

XMM SSC

Apr 30 12:22:55 2019