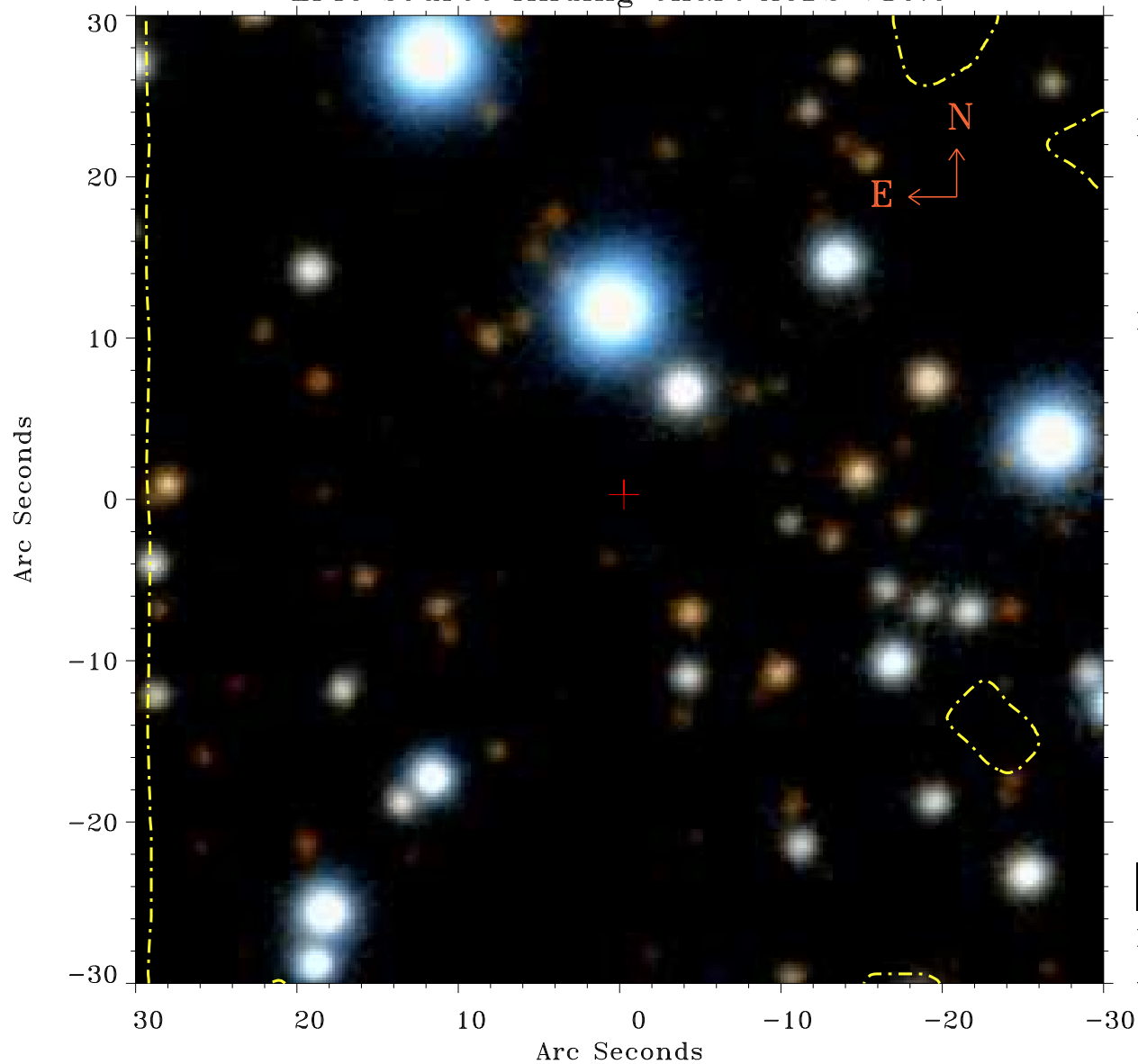


EPIC source finding chart ACDS V10.0



Principal Investigator :

Prof Katsuji Koyama

XMM target name :

W28 east shell

OBS ID : 145970401

Source number : 85

X-ray coordinates :

α : 18 00 54.25

δ : -23 15 55.3

Center coordinates :

α : 18 00 54.26

δ : -23 15 55.4

Plate reference :

Origin : PanSTARRS-DR1

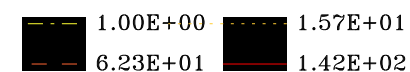
Color coding :

z band ●

(z+g)/2 ●

g band ●

Contour levels (counts) :



XMM SSC

Apr 30 11:59:33 2019