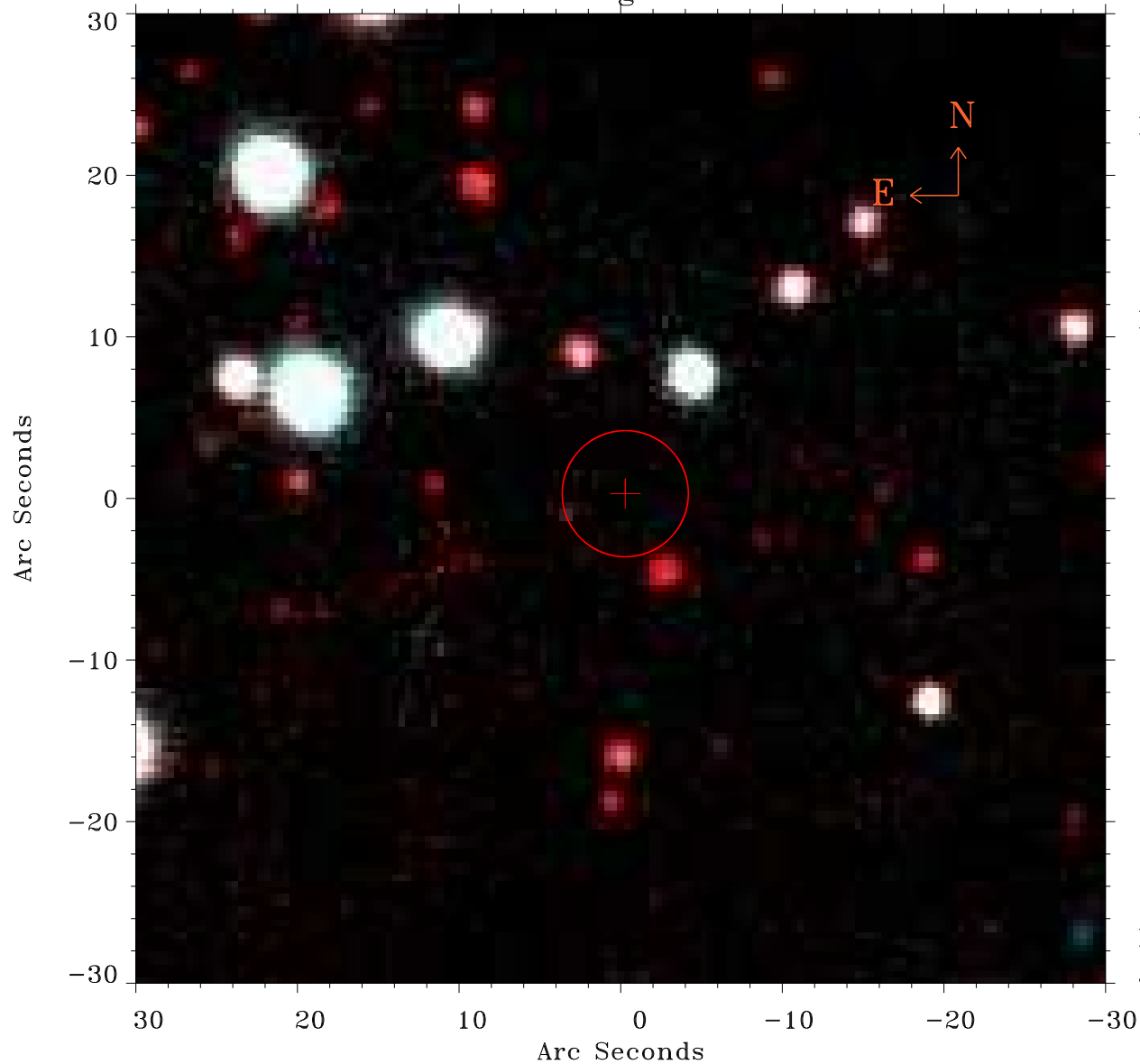


# EPIC source finding chart ACDS V10.0



Principal Investigator :

Dr giancarlo cusumano

XMM target name :

SAX J0635+0521

OBS ID : 146870501

Source number : 14

X-ray coordinates :

$\alpha$  : 06 35 31.10

$\delta$  : +05 42 03.4

Center coordinates :

$\alpha$  : 06 35 31.10

$\delta$  : +05 42 03.5

Plate reference :

Origin : PanSTARRS-DR1

Color coding :

z band ●

(z+g)/2 ●

g band ●

Error:

R90 : 3.9 arsec

XMM SSC

Jan 19 15:17:24 2025