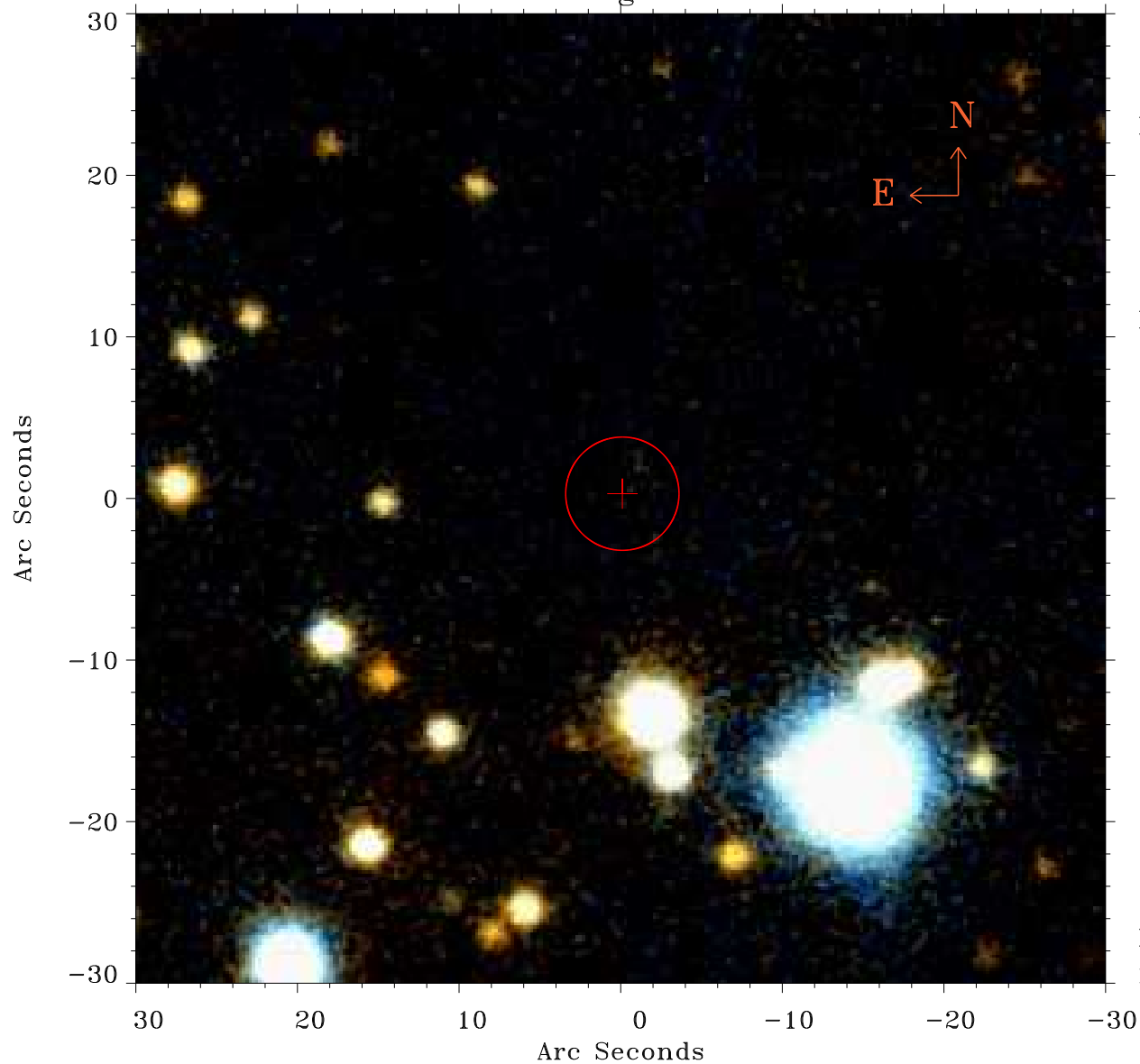


# EPIC source finding chart ACDS V10.0



Principal Investigator :

Dr giancarlo cusumano

XMM target name :

SAX J0635+0521

OBS ID : 146870901

Source number : 6

X-ray coordinates :

$\alpha$  : 06 34 55.52

$\delta$  : +05 34 58.1

Center coordinates :

$\alpha$  : 06 34 55.51

$\delta$  : +05 34 58.0

Plate reference :

Origin : PanSTARRS-DR1

Color coding :

z band ●

(z+g)/2 ●

g band ●

Error:

R90 : 3.5 arsec

XMM SSC

May 2 09:25:27 2019