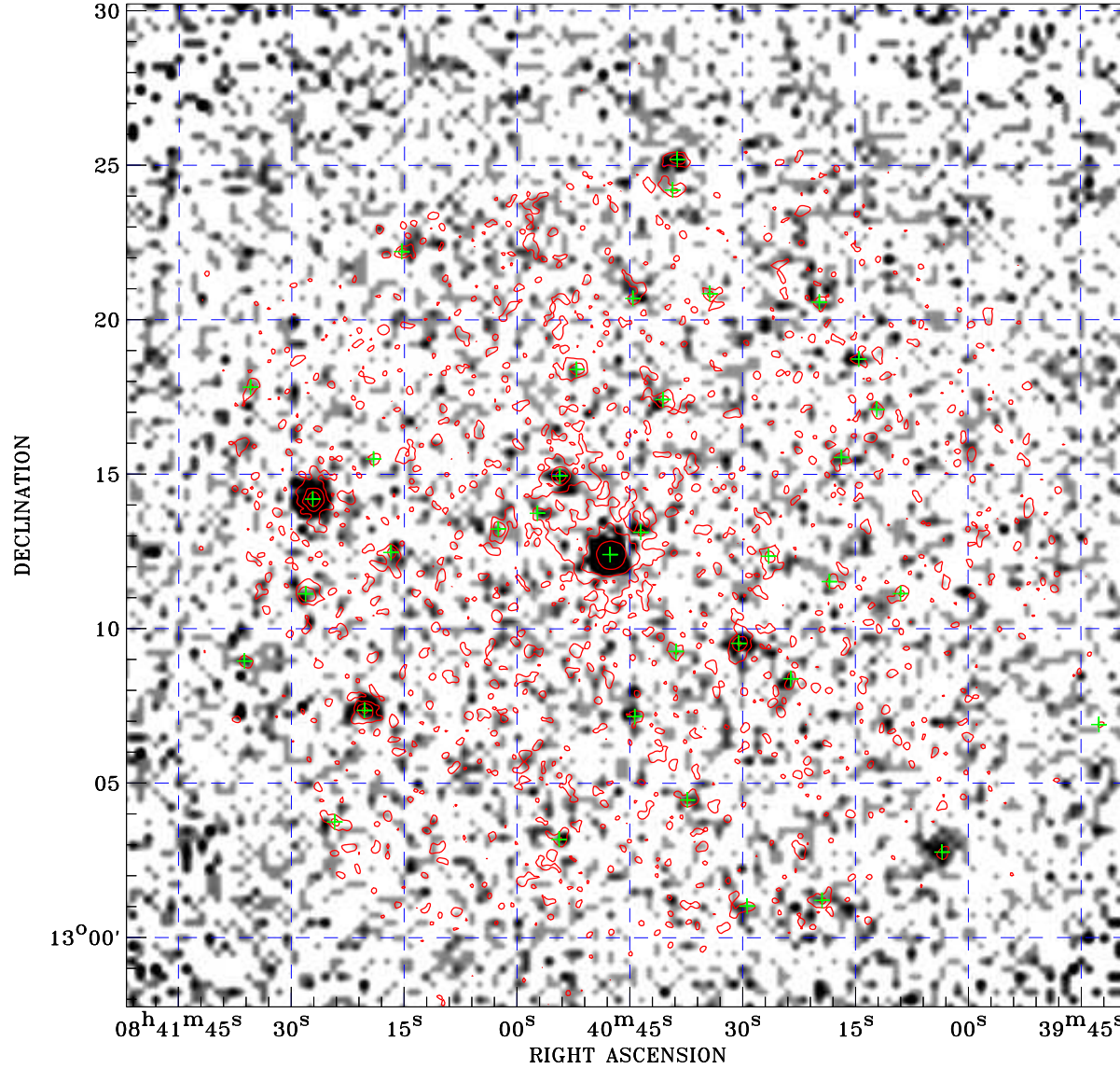



PDF XMM ROSAT image ACDS V10.0



ROSAT image gray scale (Log) :

 $\langle 5.724\text{E}-05$ $\rangle 3.955\text{E}-04$
 (counts s⁻¹)

⊙ Epic image contour
 levels at 2, 7 and 30 σ

+ Detected Epic sources

Principal Investigator :
 Prof Fabrizio Fiore

XMM target name :
 3C 207

Observation ID :
 0147670301

Epic image :
 α : 08 40 45.27
 δ : +13 13 59.8
 Energy band : 0.2–12.0 keV
 MOS1 : 5868 s
 MOS2 : 6671 s
 PN : 3980 s

Contour levels (counts) :
 2 σ :4.535E-01 7 σ :1.143E+00
 30 σ :4.316E+00

Nearest ROSAT image
 from Epic image center :
 Observation : 701170p
 Instrument : PSPCB
 α : 08 41 00.34
 δ : +13 09 35.7

Other ROSAT images :
 None

XMM SSC
 Apr 21 17:56:31 2019