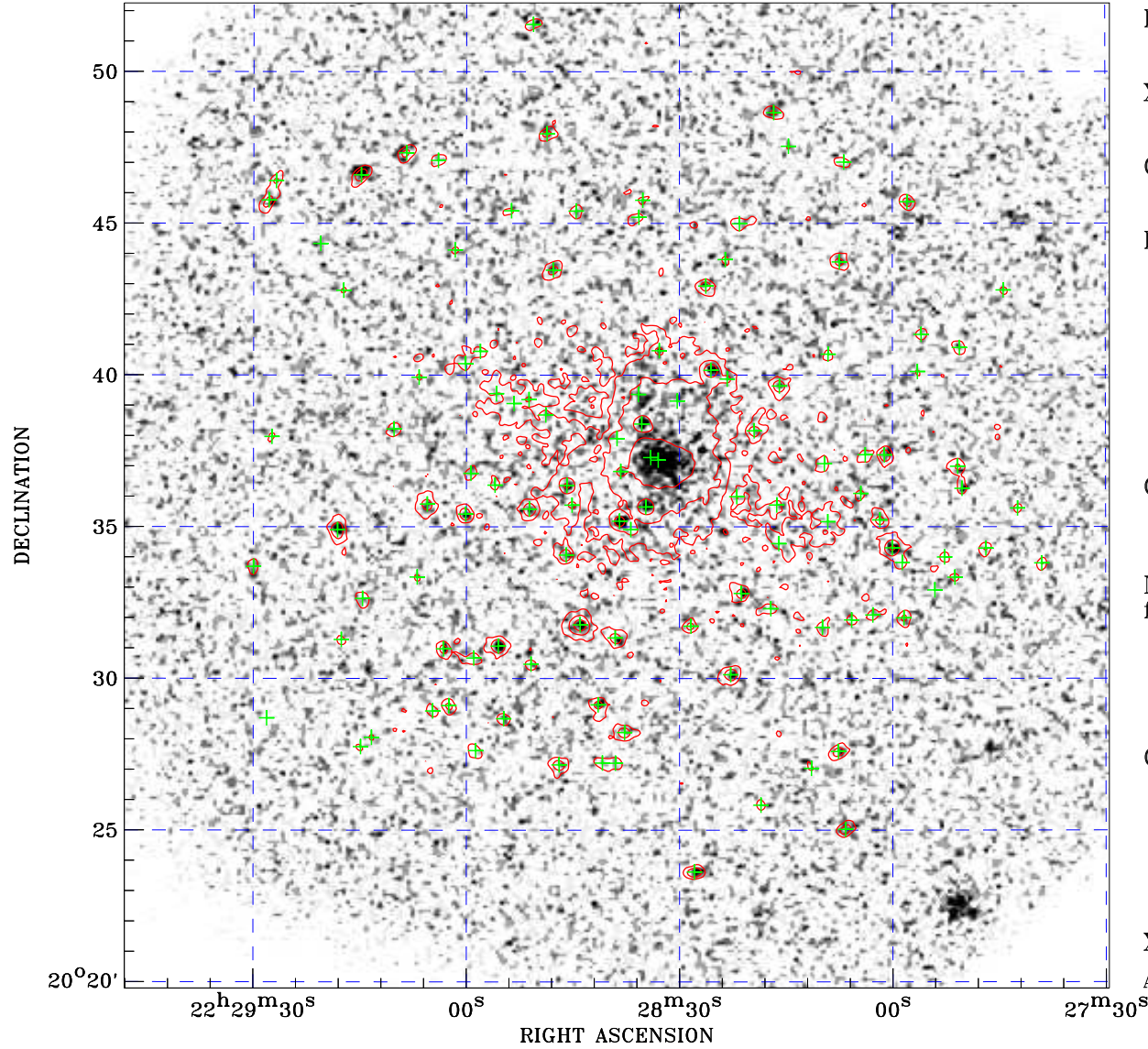



PDF XMM ROSAT image ACDS V10.0



ROSAT image gray scale (Log) :

 < 6.248E-05 > 2.181E-04
 (counts s⁻¹)

⊙ Epic image contour
 levels at 2, 7 and 30σ

+ Detected Epic sources

Principal Investigator :
 Dr Hans Boehringer

XMM target name :
 RXCJ2228+2037

Observation ID :
 0147890101

Epic image :
 α : 22 28 38.83
 δ : +20 36 02.1
 Energy band : 0.2–12.0 keV
 MOS1 : 25430 s
 MOS2 : 25436 s
 PN : 22000 s

Contour levels (counts) :
 2σ :1.771E+00 7σ :4.324E+00
 30σ :1.607E+01

Nearest ROSAT image
 from Epic image center :
 Observation : 800874h
 Instrument : HRI
 α : 22 28 42.82
 δ : +20 35 35.7

Other ROSAT images :
 None

XMM SSC
 Apr 21 07:15:16 2019