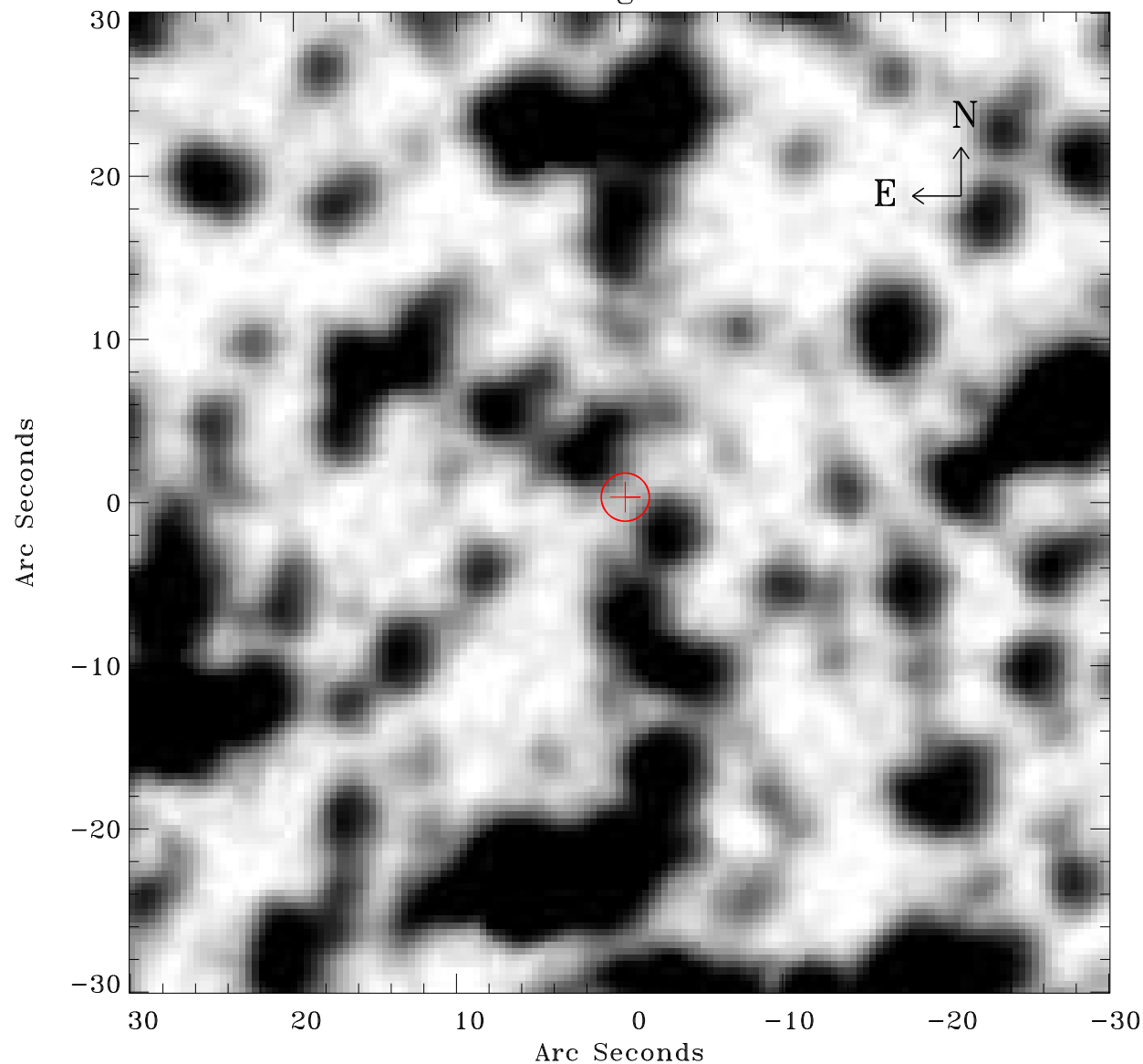


# EPIC source finding chart ACDS V10.0



Principal Investigator :

Dr Didier Barret

XMM target name :

NGC 3201

OBS ID : 148450701

Source number : 1

X-ray coordinates :

$\alpha$  : 10 17 15.60

$\delta$  : -46 22 55.3

Center coordinates :

$\alpha$  : 10 17 15.60

$\delta$  : -46 22 55.2

Plate reference :

Origin : CDS HIPs Network

Plate : MAMA srcj

Pixel : 0.40 "/pix

Error circle :

$R_{90}$  (") : 1.5

XMM SSC

Apr 28 12:29:37 2019