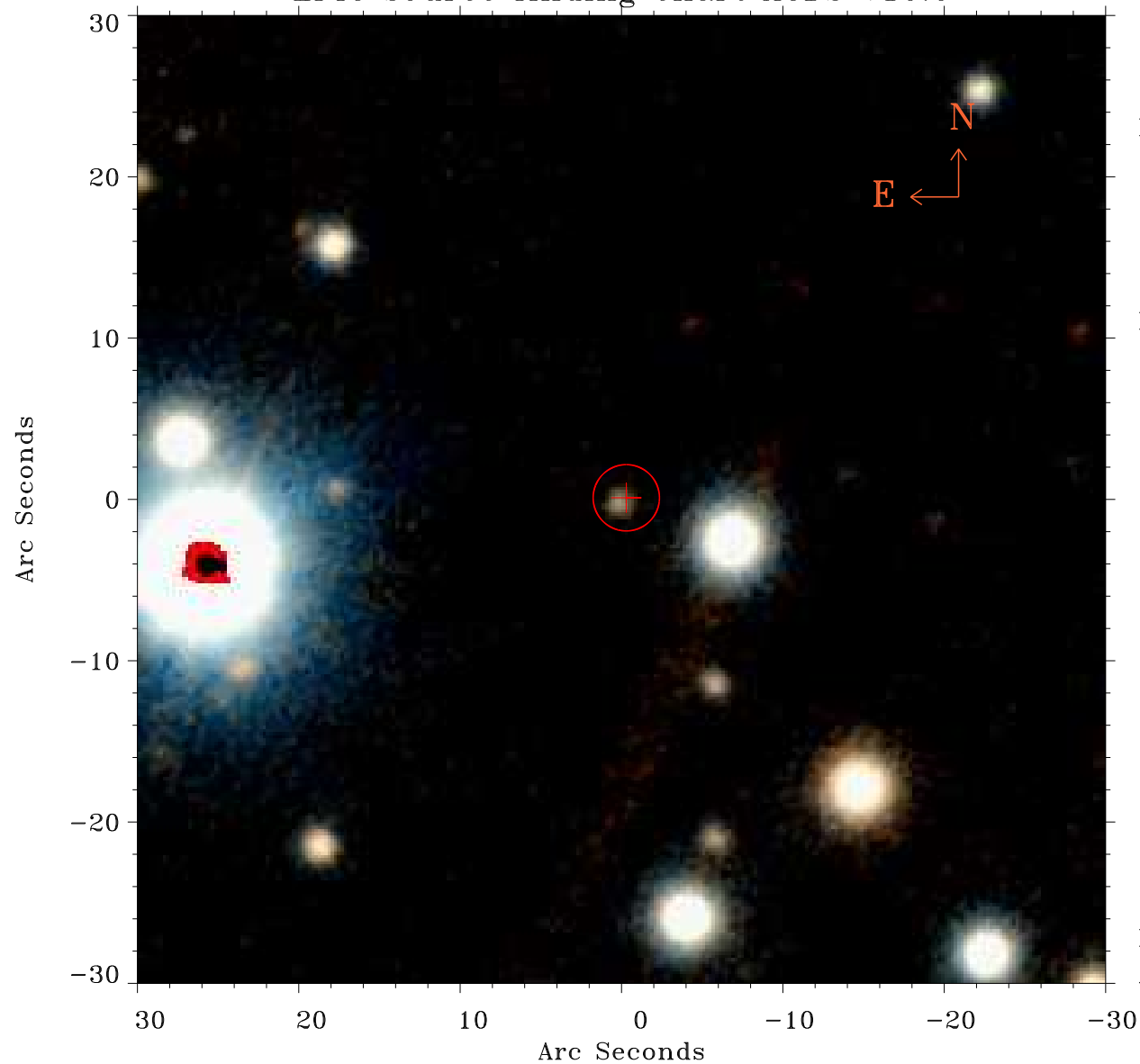


# EPIC source finding chart ACDS V10.0



Principal Investigator :

Prof Joel Kastner

XMM target name :

T Cas

OBS ID : 148500501

Source number : 4

X-ray coordinates :

$\alpha$  : 00 24 41.41

$\delta$  : +55 47 08.6

Center coordinates :

$\alpha$  : 00 24 41.42

$\delta$  : +55 47 08.7

Plate reference :

Origin : PanSTARRS-DR1

Color coding :

z band ●

(z+g)/2 ●

g band ●

Error:

R90 : 2.0 arsec

XMM SSC

Apr 23 23:58:25 2019