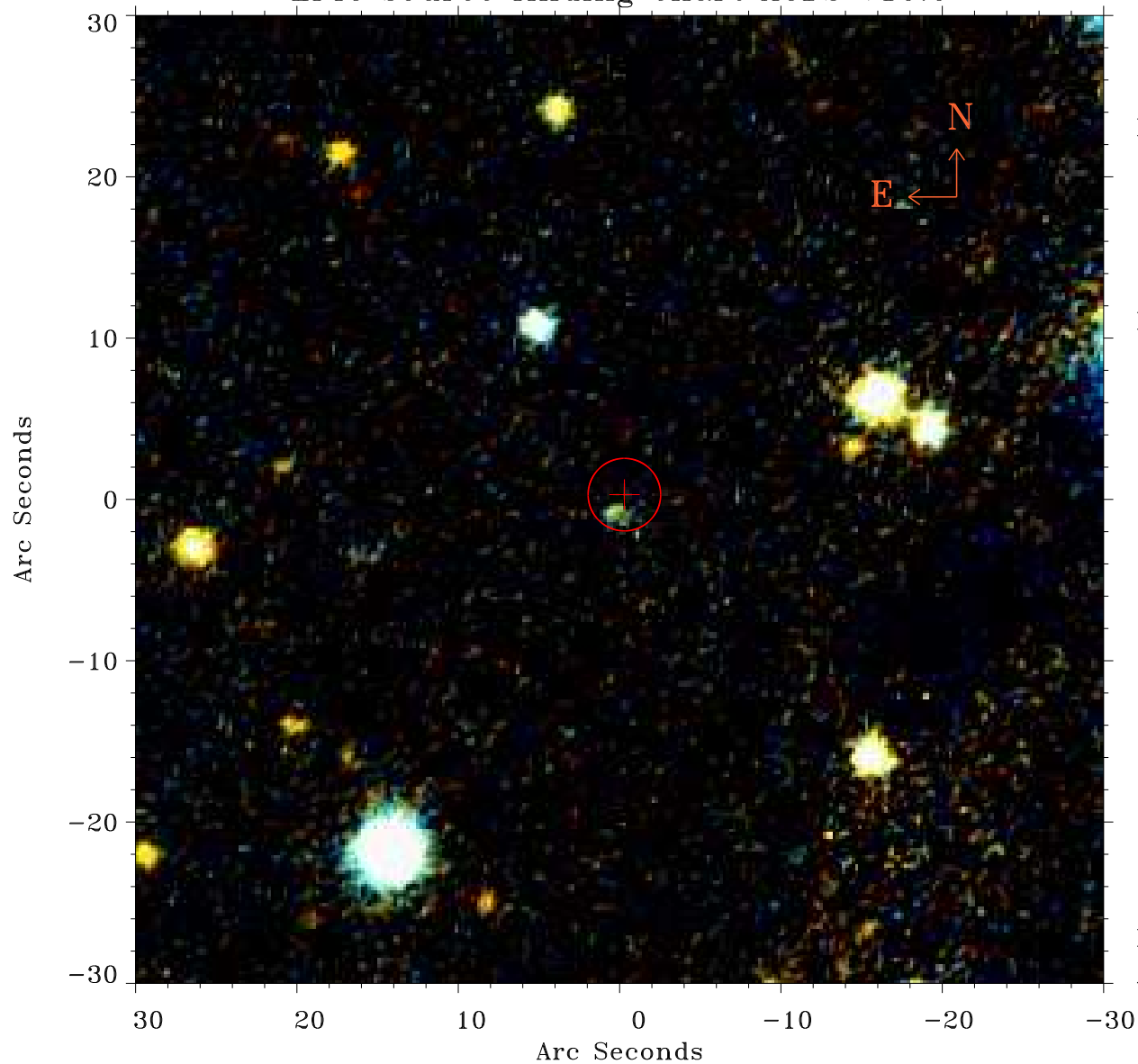


EPIC source finding chart ACDS V10.0



Principal Investigator :

Prof Joel Kastner

XMM target name :

T Cas

OBS ID : 148500501

Source number : 9

X-ray coordinates :

α : 00 22 54.08

δ : +55 38 20.4

Center coordinates :

α : 00 22 54.10

δ : +55 38 20.3

Plate reference :

Origin : PanSTARRS-DR1

Color coding :

z band ●

(z+g)/2 ●

g band ●

Error:

R90 : 2.2 arsec

XMM SSC

Apr 23 23:47:43 2019