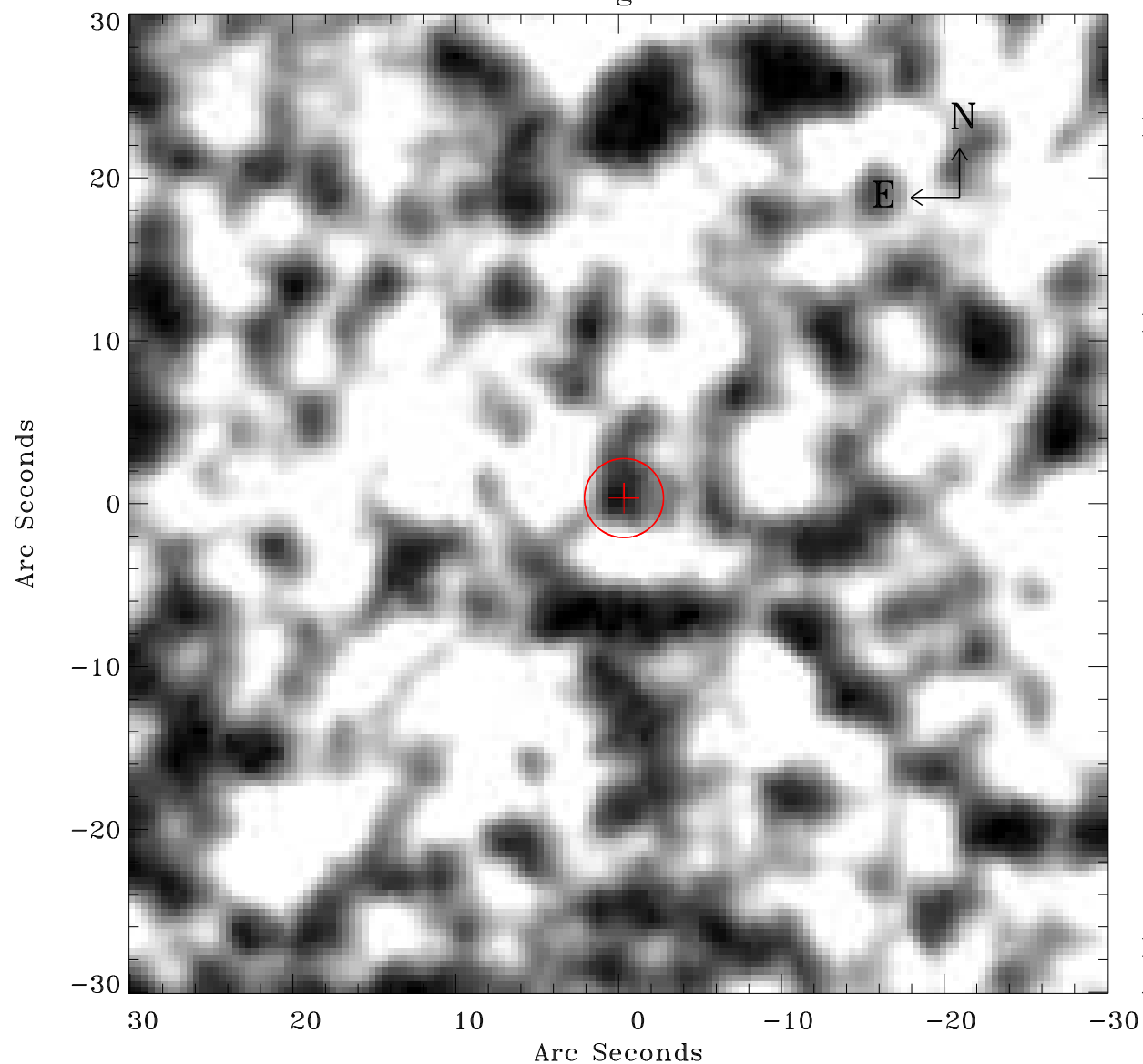


# EPIC source finding chart ACDS V10.0



Principal Investigator :

Dr Marina Orio

XMM target name :

N LMC 1995

OBS ID : 148870101

Source number : 2

X-ray coordinates :

$\alpha$  : 05 27 45.19

$\delta$  : -70 05 33.7

Center coordinates :

$\alpha$  : 05 27 45.17

$\delta$  : -70 05 33.6

Plate reference :

Origin : CDS HIPs Network

Plate : MAMA srcj

Pixel : 0.40 "/pix

Error circle :

$R_{90}$  (") : 2.4

XMM SSC

Apr 30 13:03:02 2019