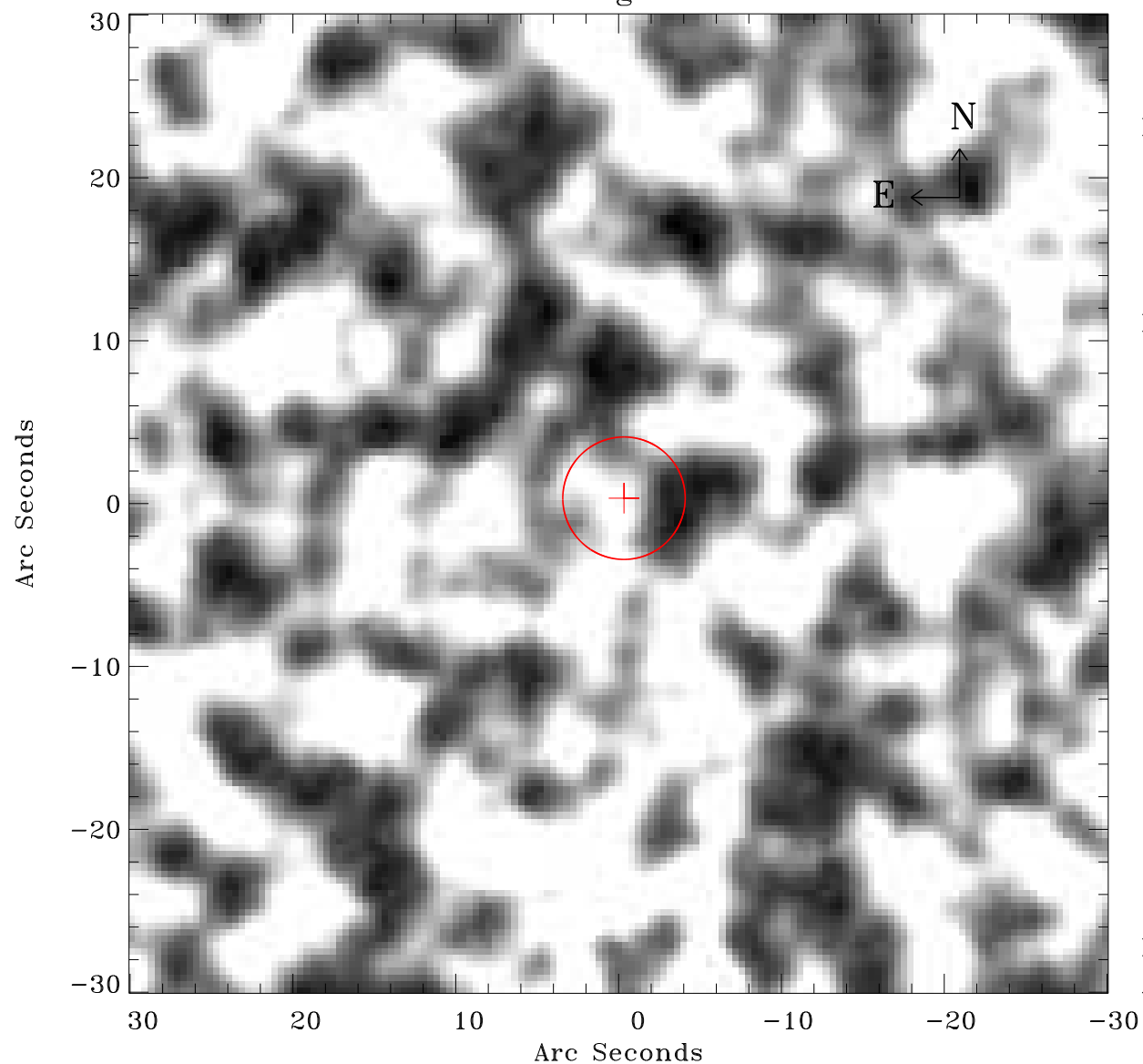


# EPIC source finding chart ACDS V10.0



Principal Investigator :

Dr Marina Orio

XMM target name :

N LMC 1995

OBS ID : 148870101

Source number : 62

X-ray coordinates :

$\alpha$  : 05 29 00.58

$\delta$  : -70 03 43.4

Center coordinates :

$\alpha$  : 05 29 00.56

$\delta$  : -70 03 43.3

Plate reference :

Origin : CDS HIPs Network

Plate : MAMA srcj

Pixel : 0.40 "/pix

Error circle :

$R_{90}$  (") : 3.7

XMM SSC

Apr 30 13:43:10 2019