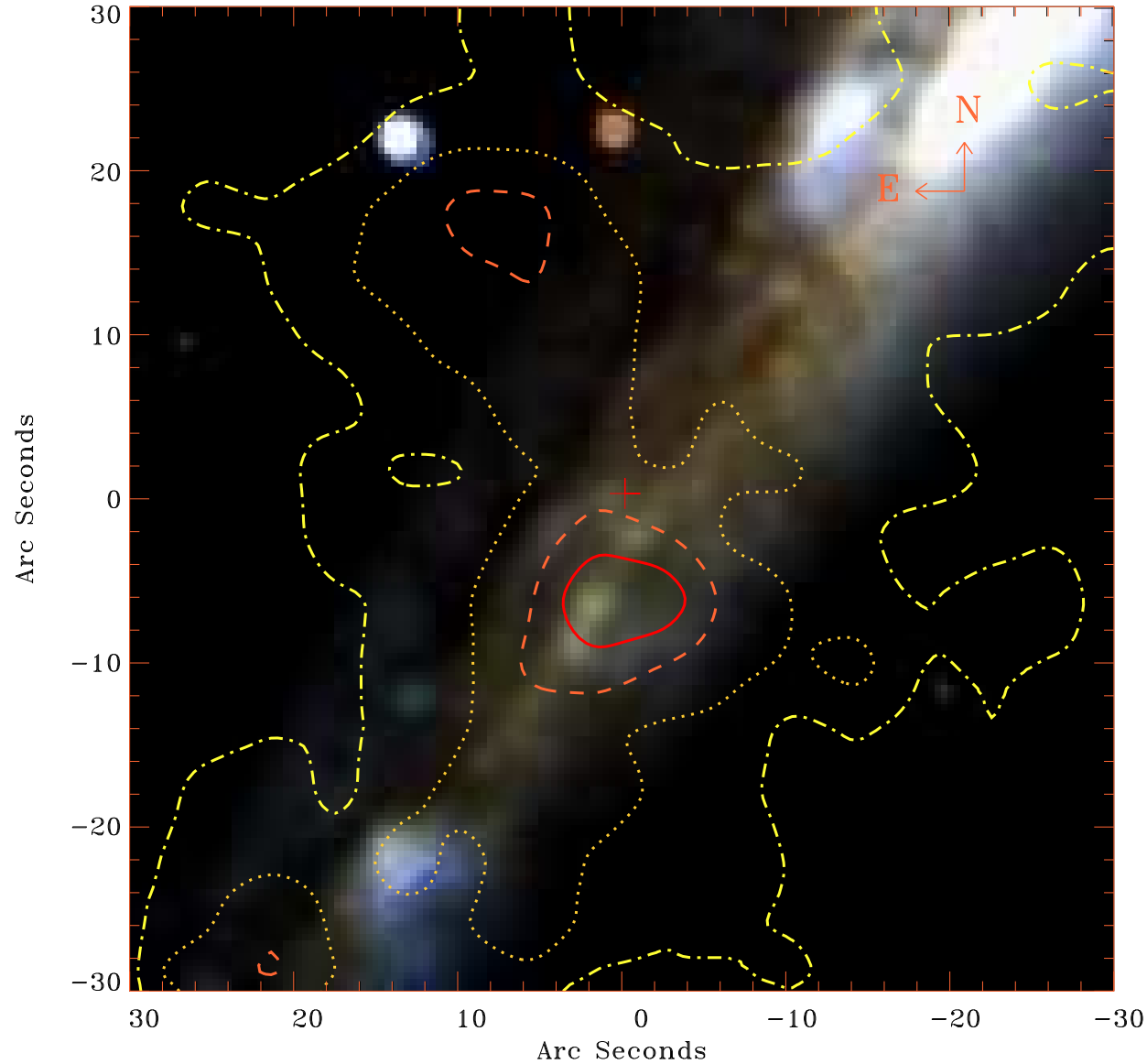


# EPIC source finding chart V10.0



Principal Investigator :  
Dr Ralf-Juergen Dettmar

XMM target name :  
NGC5775

OBS ID : 150350101  
Source number : 2

X-ray coordinates :  
 $\alpha$  : 14 53 59.39  
 $\delta$  : +03 32 03.2

Center coordinates :  
 $\alpha$  : 14 53 59.38  
 $\delta$  : +03 32 03.3

Plate reference :  
Origin : SDSS

Color coding :  
i band ●  
r band ●  
g band ●

Contour levels (counts) :  
5.00E+00 1.25E+01  
2.89E+01 5.14E+01

XMM SSC  
Apr 25 07:19:35 2019