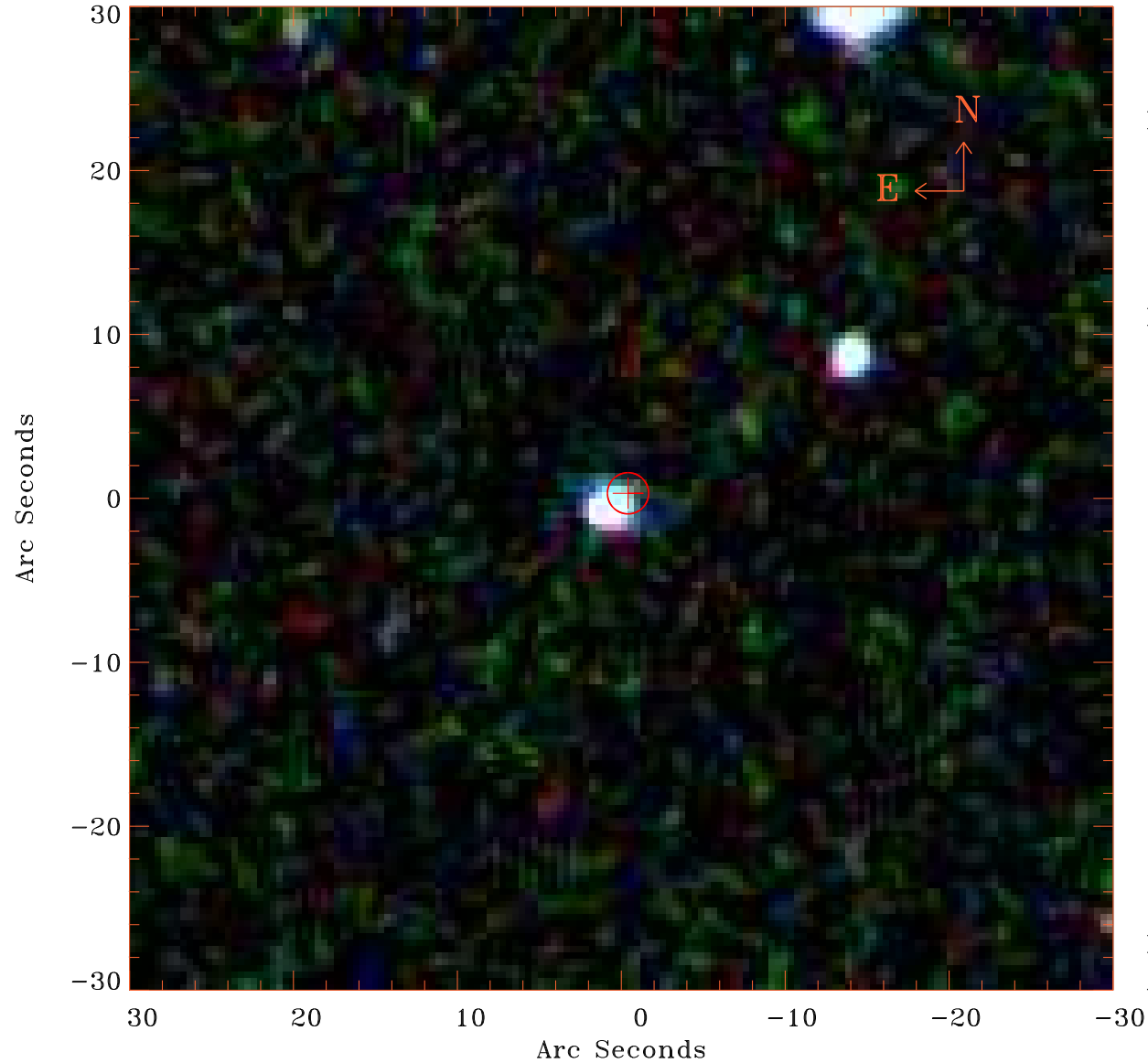


EPIC source finding chart V10.0



Principal Investigator :
Dr Ralf-Juergen Dettmar

XMM target name :
NGC5775

OBS ID : 150350101
Source number : 31

X-ray coordinates :
 α : 14 54 19.13
 δ : +03 33 33.4

Center coordinates :
 α : 14 54 19.14
 δ : +03 33 33.5

Plate reference :
Origin : SDSS

Color coding :
i band ●
r band ●
g band ●

Error circle :
 R_{90} (") : 1.2

XMM SSC
Apr 25 07:20:24 2019