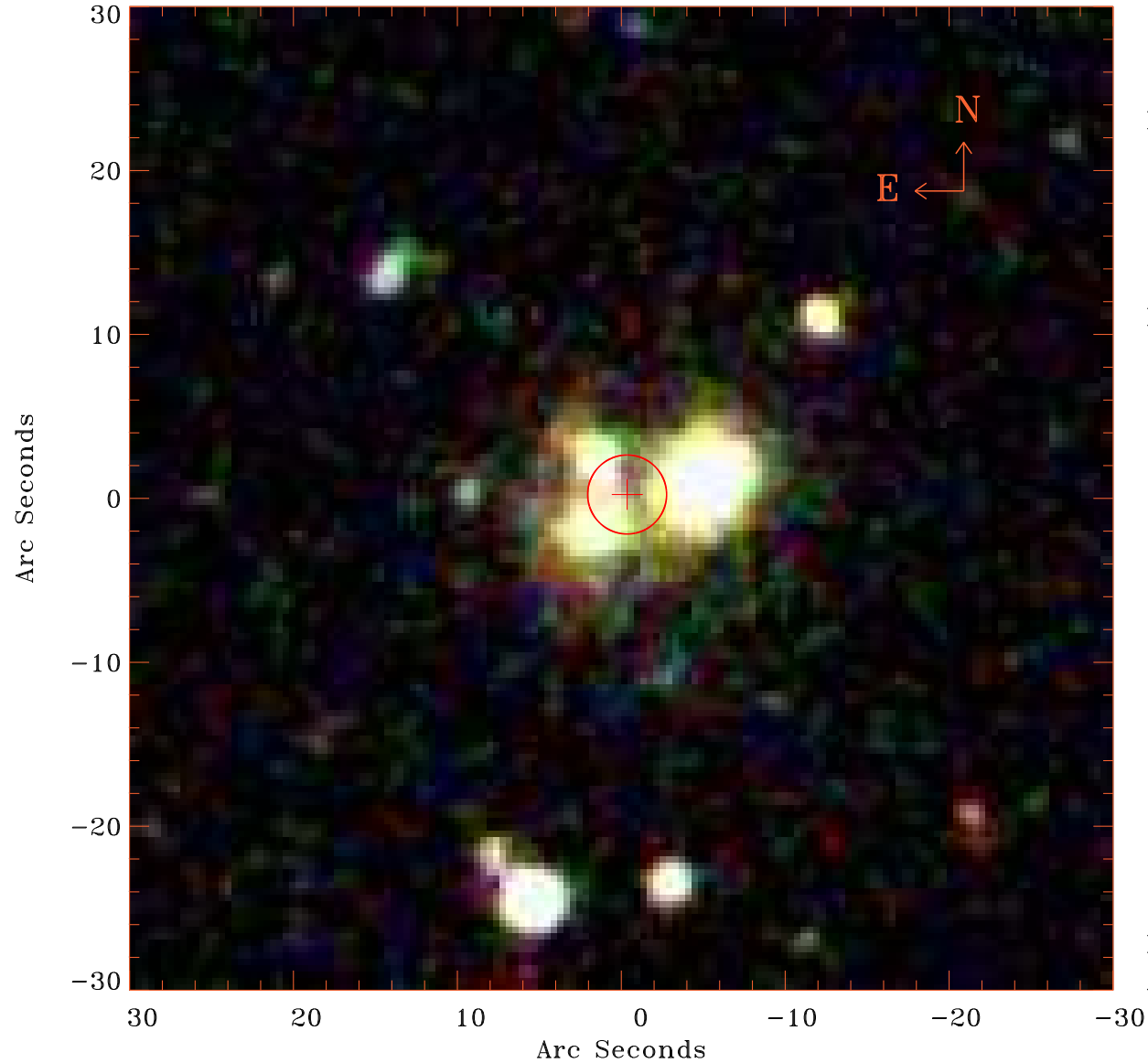


# EPIC source finding chart V10.0



Principal Investigator :  
Dr Ralf-Juergen Dettmar

XMM target name :  
NGC5775

OBS ID : 150350101  
Source number : 66

X-ray coordinates :  
 $\alpha$  : 14 54 22.71  
 $\delta$  : +03 36 12.5

Center coordinates :  
 $\alpha$  : 14 54 22.71  
 $\delta$  : +03 36 12.6

Plate reference :  
Origin : SDSS

Color coding :  
i band ●  
r band ●  
g band ●

Error circle :  
 $R_{90}$  (") : 2.4

XMM SSC  
Apr 25 07:20:32 2019