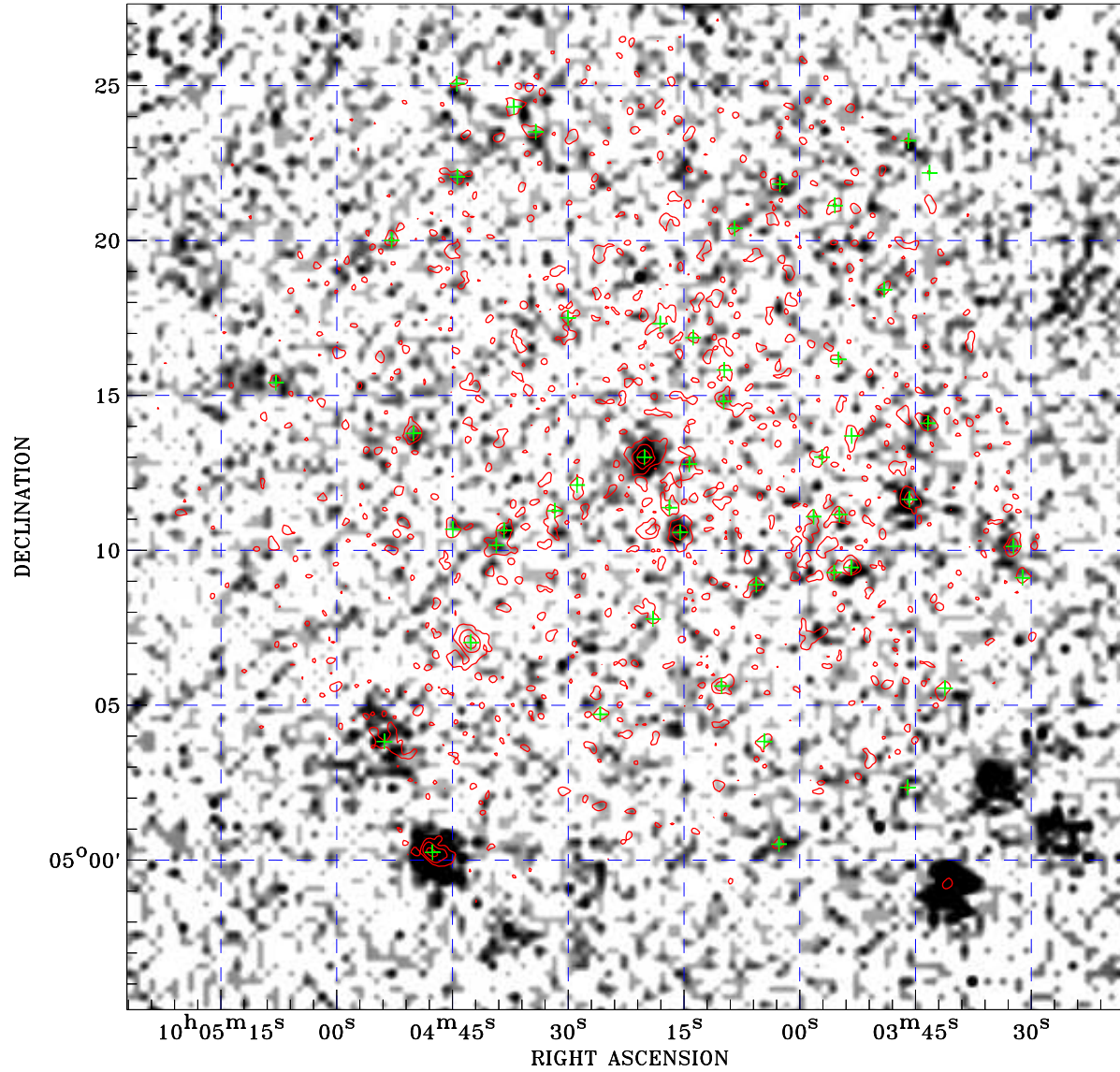



# PDF XMM ROSAT image ACDS V10.0



ROSAT image gray scale (Log) :  
  
 $\langle 6.247\text{E-}05$   $\rangle 3.836\text{E-}04$   
 (counts s<sup>-1</sup>)

⊙ Epic image contour  
 levels at 2, 7 and 30 $\sigma$

+ Detected Epic sources

Principal Investigator :  
 Dr Norbert Schartel

XMM target name :  
 PG 1001+054

Observation ID :  
 0150610101

Epic image :  
 $\alpha$  : 10 04 22.01  
 $\delta$  : +05 11 24.4  
 Energy band : 0.2–12.0 keV  
 MOS1 : 10839 s  
 MOS2 : 11107 s  
 PN : 7797 s

Contour levels (counts) :  
 2 $\sigma$  :7.295E-01 7 $\sigma$  :1.746E+00  
 30 $\sigma$  6.421E+00

Nearest ROSAT image  
 from Epic image center :  
 Observation : 700774p  
 Instrument : PSPCB  
 $\alpha$  : 10 04 31.27  
 $\delta$  : +05 10 11.7

Other ROSAT images :  
 None

XMM SSC  
 May 9 16:59:01 2019