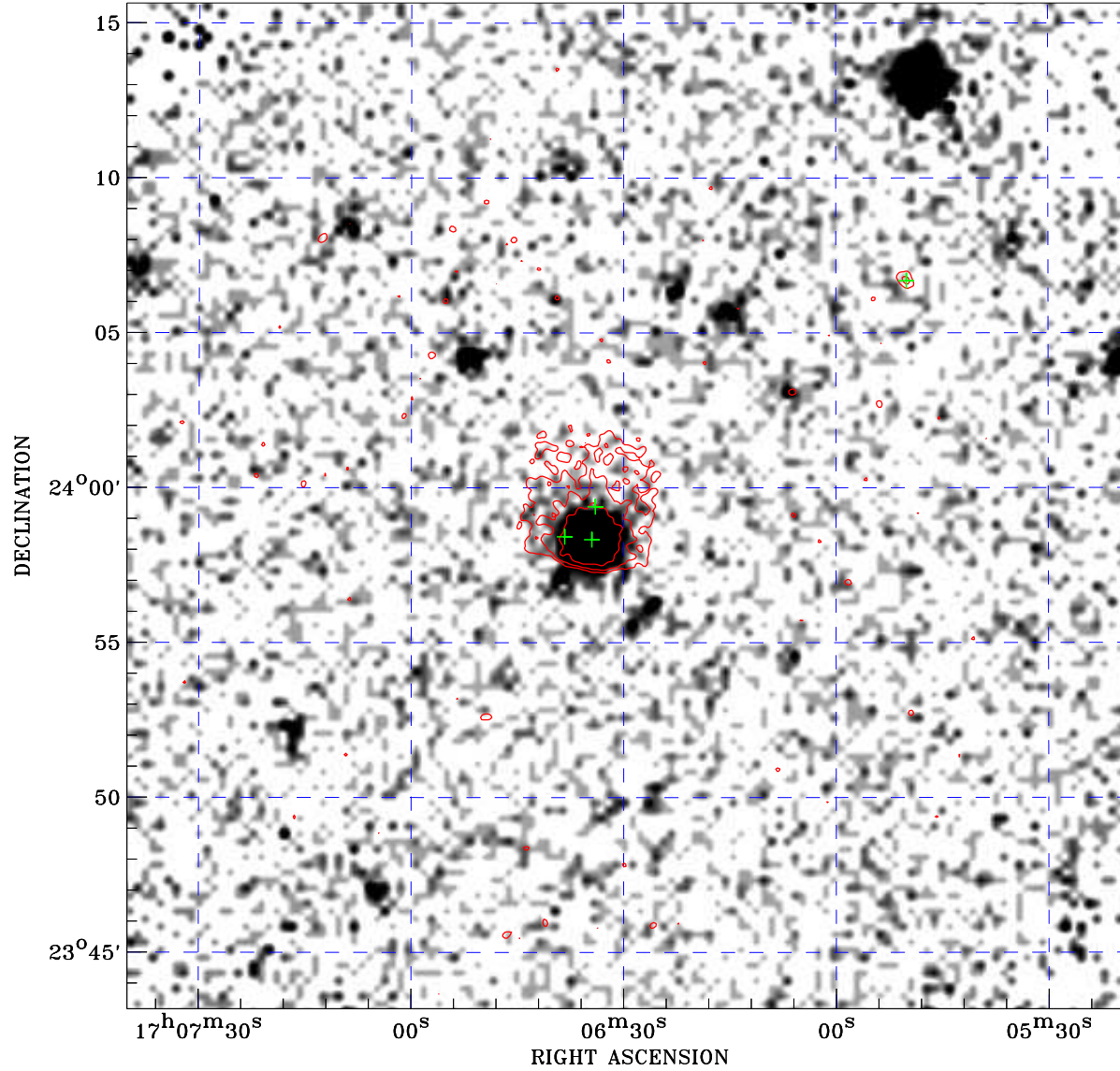



PDF XMM ROSAT image ACDS V10.0



ROSAT image gray scale (Log) :

 $\langle 5.389\text{E}-05$ $\rangle 4.293\text{E}-04$
 (counts s⁻¹)

⊙ Epic image contour
 levels at 2, 7 and 30σ
 + Detected Epic sources

Principal Investigator :
 Dr Duncan Galloway

XMM target name :
 4U 1700+24

Observation ID :
 0151240301

Epic image :
 α : 17 06 29.12
 δ : +23 59 25.2
 Energy band : 0.2–12.0 keV
 MOS1 : 1063 s
 MOS2 : 1063 s
 PN : 1050 s

Contour levels (counts) :
 2σ :2.152E-01 7σ :7.306E-01
 30σ 3.101E+00

Nearest ROSAT image
 from Epic image center :
 Observation : 400118p
 Instrument : PSPCB
 α : 17 06 46.75
 δ : +23 55 11.7

Other ROSAT images :
 None

XMM SSC
 May 4 00:24:05 2019