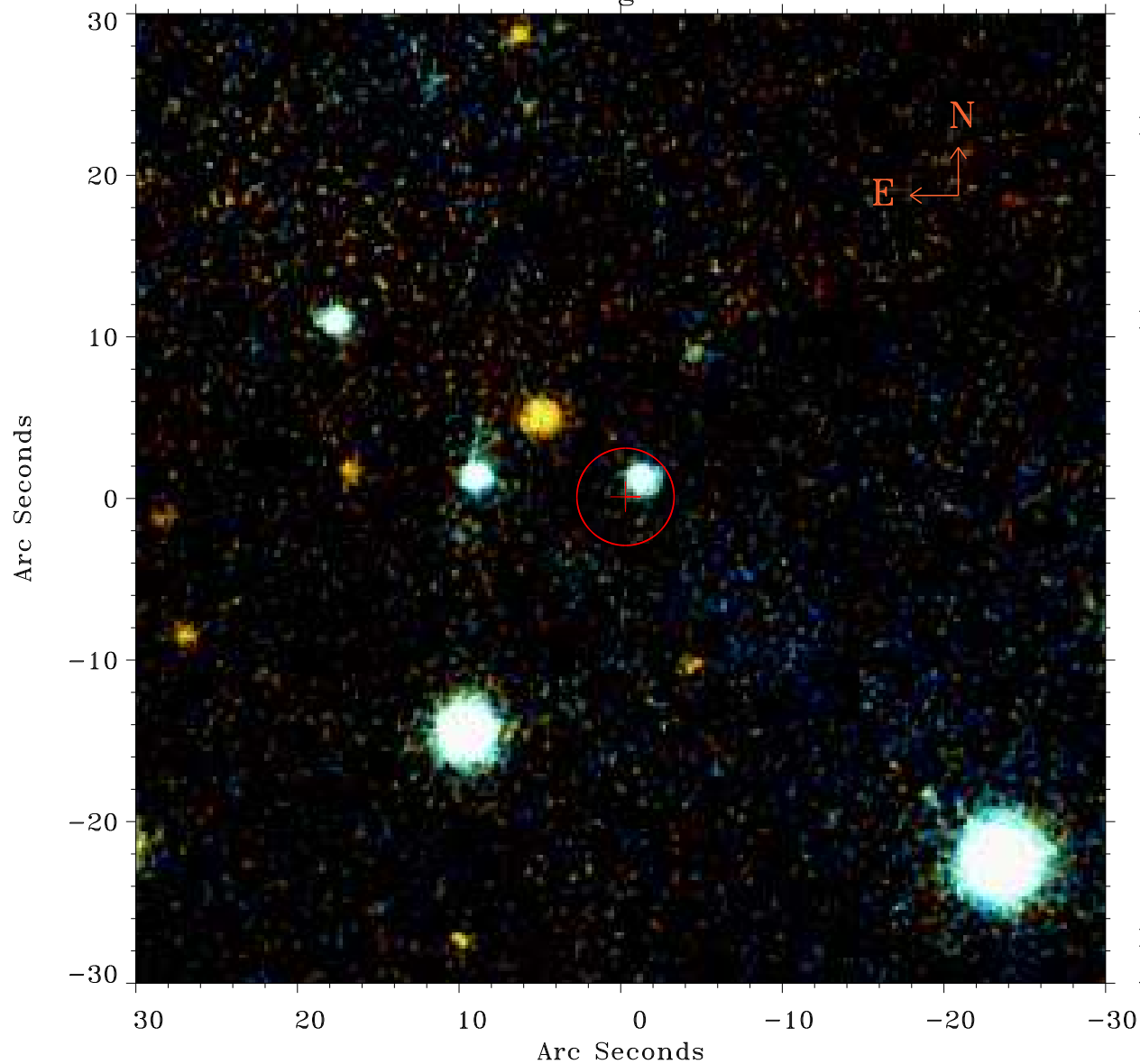


# EPIC source finding chart ACDS V10.0



Principal Investigator :

Dr Rosanne Di Stefano

XMM target name :

M31-Halo1

OBS ID : 151581101

Source number : 34

X-ray coordinates :

$\alpha$  : 00 33 45.57

$\delta$  : +39 18 04.5

Center coordinates :

$\alpha$  : 00 33 45.58

$\delta$  : +39 18 04.6

Plate reference :

Origin : PanSTARRS-DR1

Color coding :

z band ●

(z+g)/2 ●

g band ●

Error:

R90 : 3.0 arsec

XMM SSC

Apr 22 09:44:14 2019