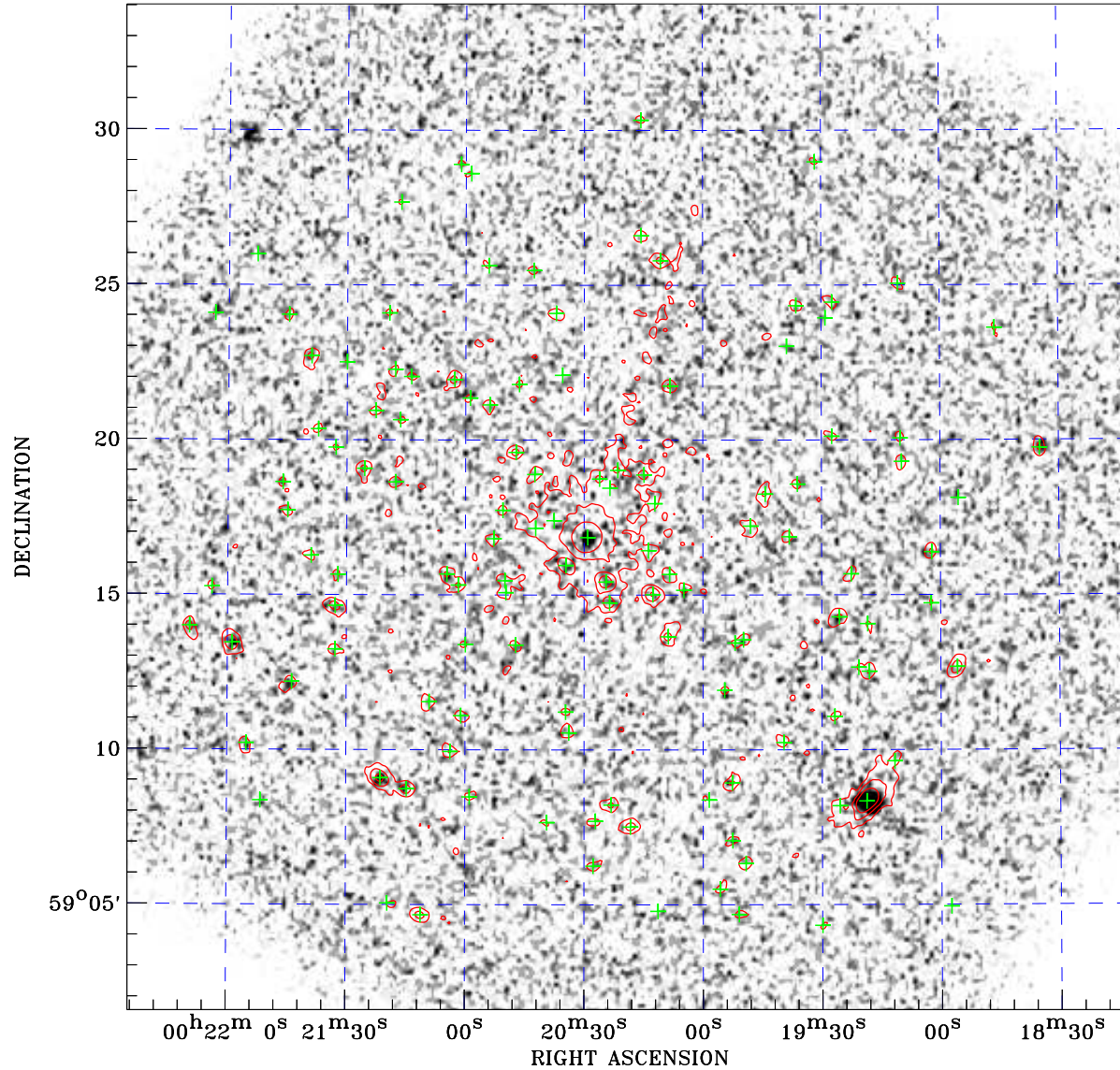


PDF XMM ROSAT image ACDS V10.0



ROSAT image gray scale (Log) :

$\langle 5.567\text{E}-05$ $\rangle 2.141\text{E}-04$

(counts s⁻¹)

⊙ Epic image contour
levels at 2, 7 and 30 σ

+ Detected Epic sources

Principal Investigator :
Dr Rosa Williams

XMM target name :
IC 10 X-1 & Shell

Observation ID :
0152260101

Epic image :
 α : 00 20 18.44
 δ : +59 17 51.2
Energy band : 0.2–12.0 keV
MOS1 : 36797 s
MOS2 : 36631 s
PN : 33836 s

Contour levels (counts) :
2 σ :2.384E+00 7 σ :5.491E+00
30 σ :1.978E+01

Nearest ROSAT image
from Epic image center :
Observation : 600902h
Instrument : HRI
 α : 00 20 36.49
 δ : +59 15 47.7

Other ROSAT images :
None

XMM SSC
May 3 16:58:01 2019