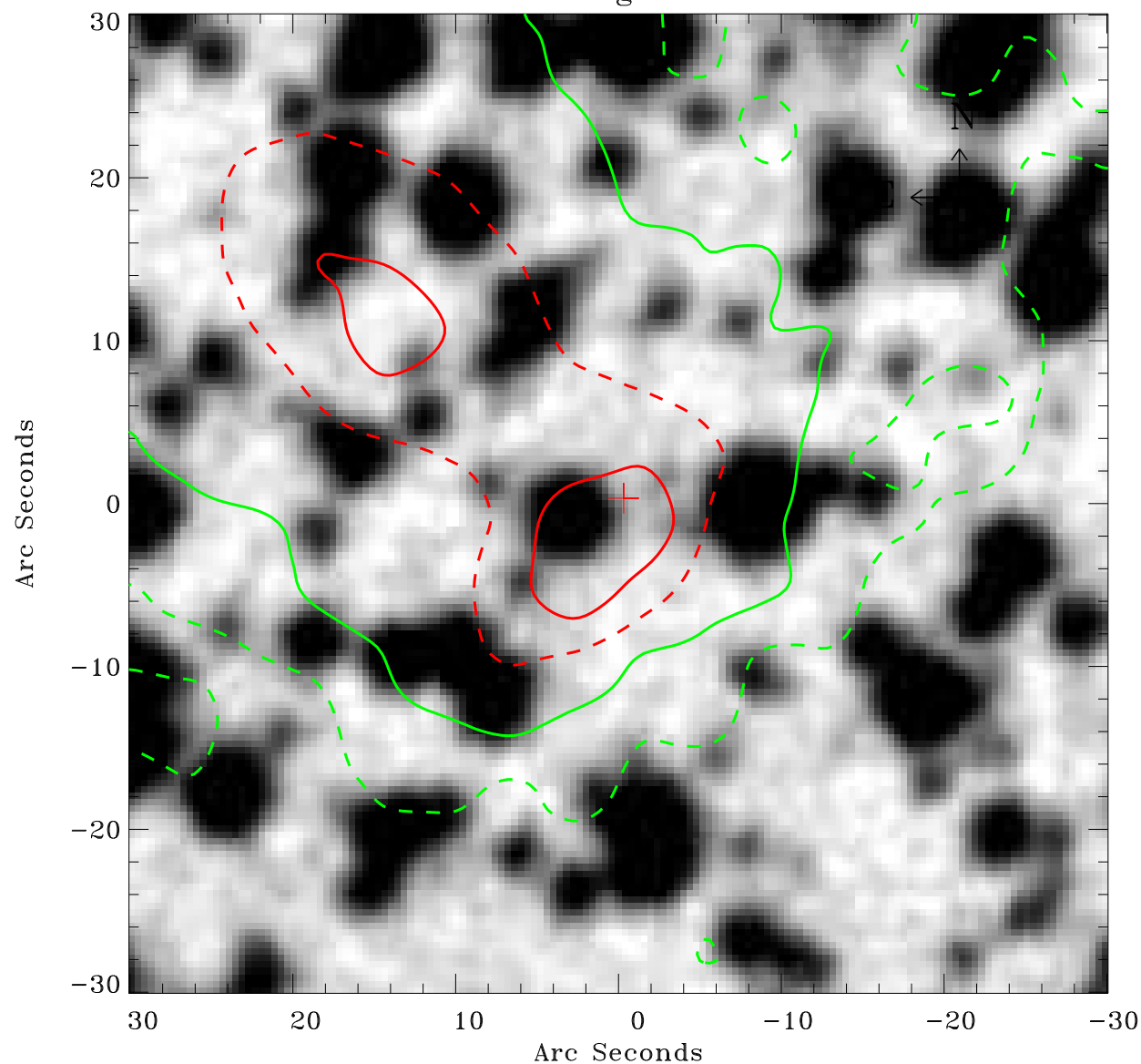


EPIC source finding chart ACDS V10.0



Principal Investigator :

Dr Werner Becker

XMM target name :

MSH 11-61A

OBS ID : 152570101

Source number : 3

X-ray coordinates :

α : 11 01 44.88

δ : -61 01 37.3

Center coordinates :

α : 11 01 44.87

δ : -61 01 37.2

Plate reference :

Origin : CDS HIPs Network

Plate : MAMA srcj

Pixel : 0.40 "/pix

Contour levels (counts) :

--- 6.67E+00 --- 1.65E+01

--- 4.14E+01 --- 7.87E+01

XMM SSC

May 2 10:07:19 2019