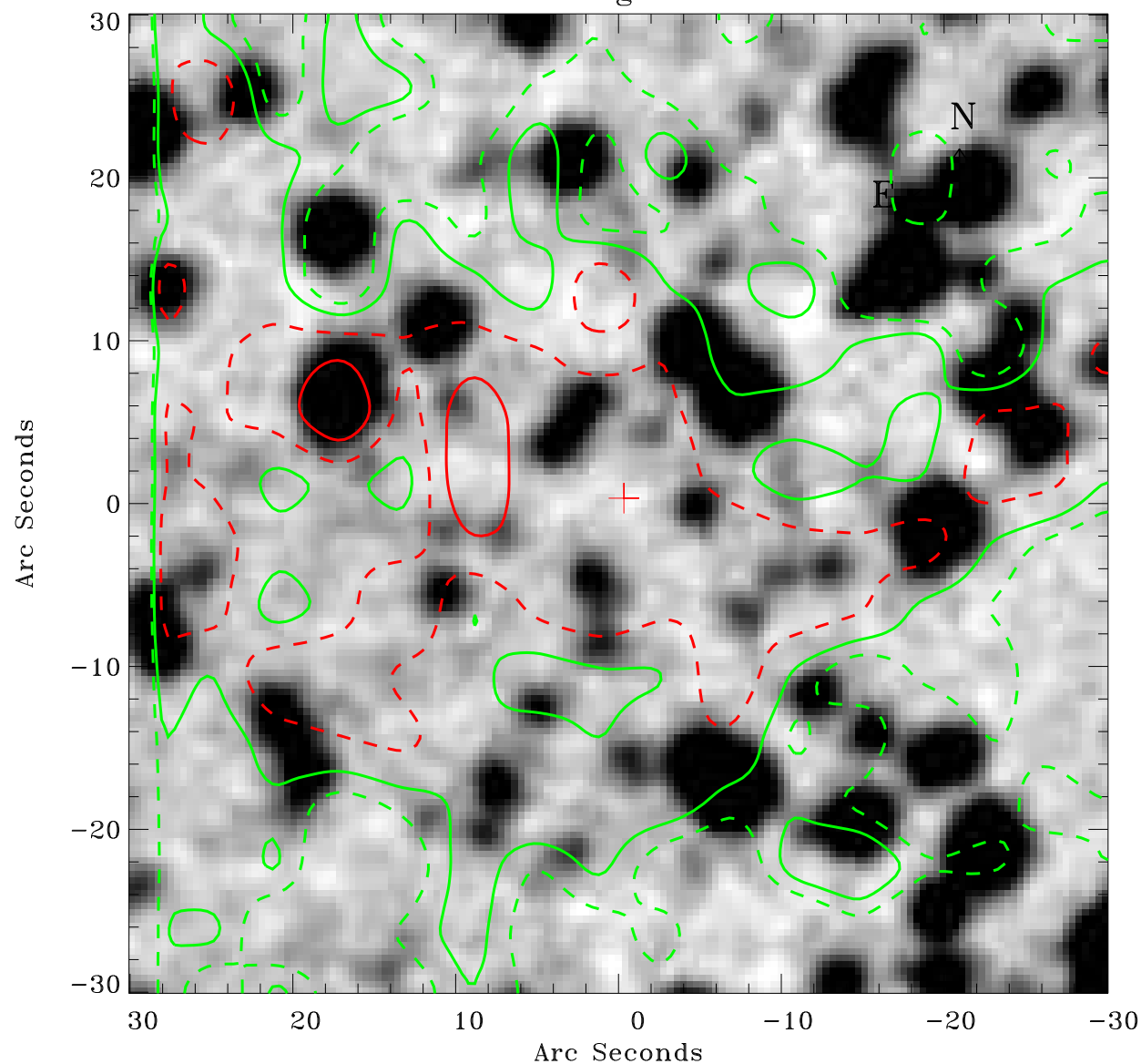


EPIC source finding chart ACDS V10.0



Principal Investigator :

Dr Werner Becker

XMM target name :

MSH 11-61A

OBS ID : 152570101

Source number : 7

X-ray coordinates :

α : 11 02 45.67

δ : -60 55 21.1

Center coordinates :

α : 11 02 45.66

δ : -60 55 21.0

Plate reference :

Origin : CDS HIPs Network

Plate : MAMA srcj

Pixel : 0.40 "/pix

Contour levels (counts) :

--- 3.98E+01 --- 4.42E+01

--- 5.13E+01 --- 5.95E+01

XMM SSC

May 2 10:07:54 2019