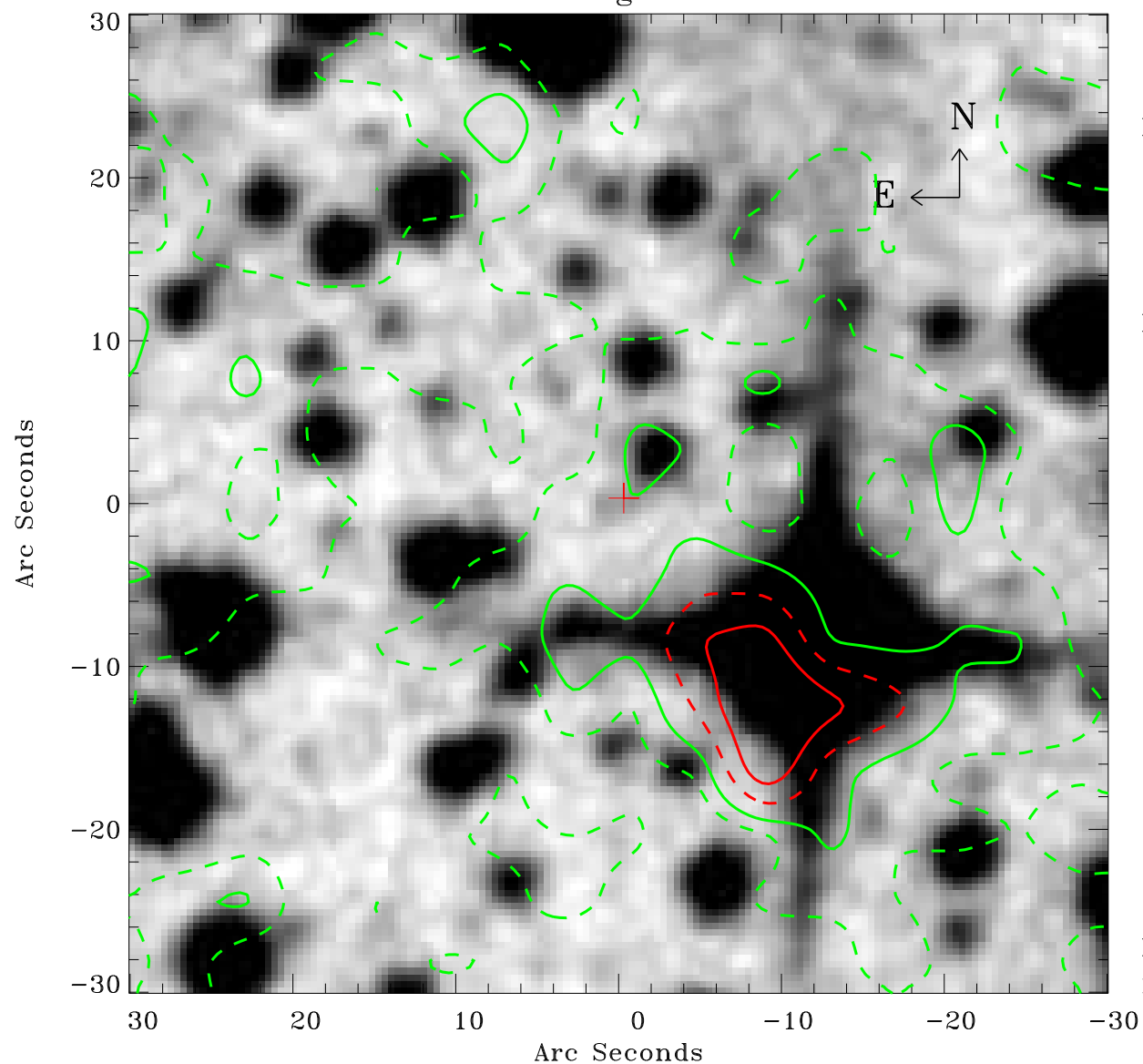


EPIC source finding chart ACDS V10.0



Principal Investigator :

Dr Werner Becker

XMM target name :

MSH 11-61A

OBS ID : 152570101

Source number : 10

X-ray coordinates :

α : 11 02 09.91

δ : -60 48 22.7

Center coordinates :

α : 11 02 09.90

δ : -60 48 22.6

Plate reference :

Origin : CDS HIPs Network

Plate : MAMA srcj

Pixel : 0.40 "/pix

Contour levels (counts) :

7.58E+00 1.18E+01

1.84E+01 2.59E+01

XMM SSC

May 2 10:07:30 2019