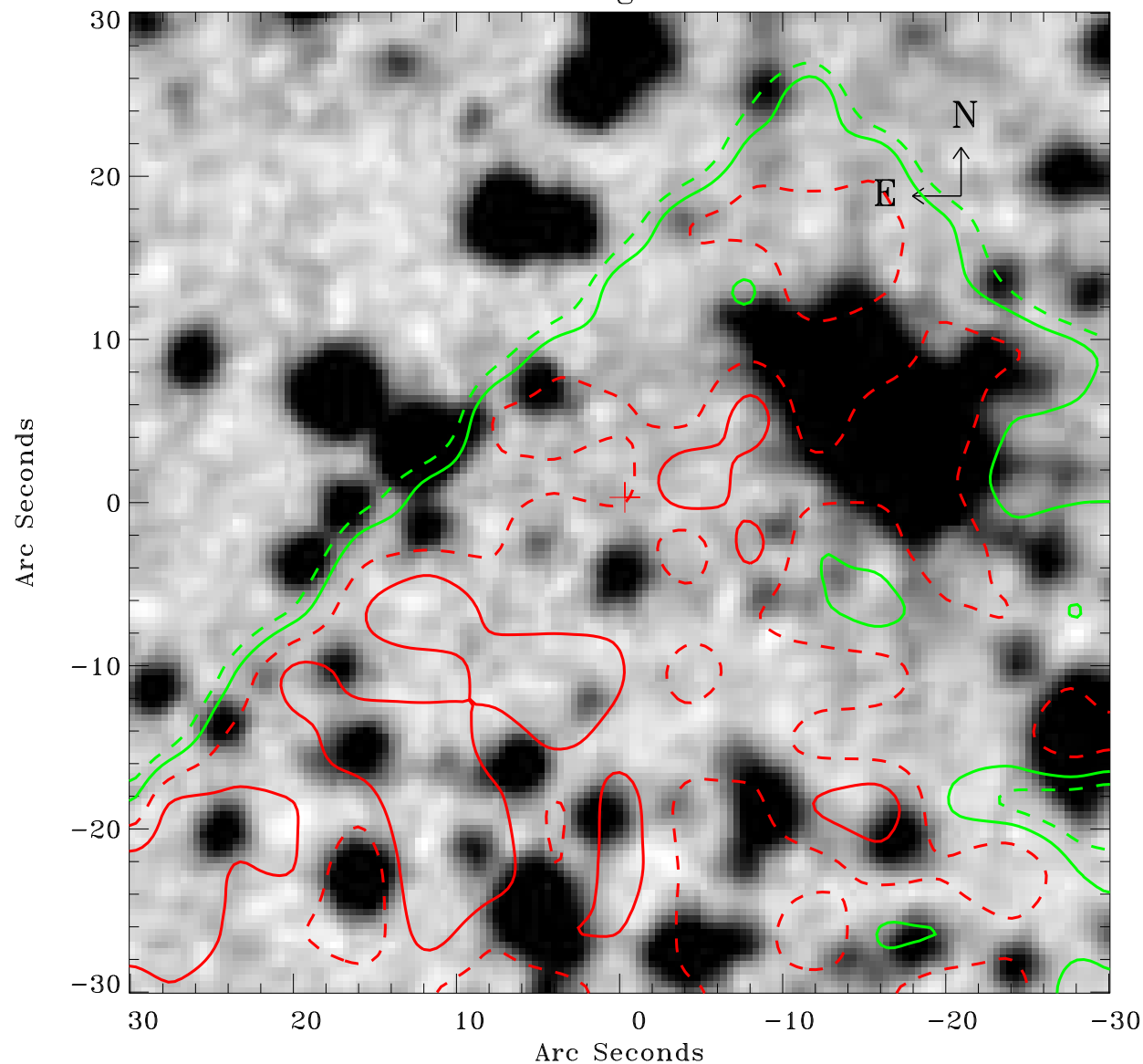


# EPIC source finding chart ACDS V10.0



Principal Investigator :

Dr Werner Becker

XMM target name :

MSH 11-61A

OBS ID : 152570101

Source number : 15

X-ray coordinates :

$\alpha$  : 11 02 48.59

$\delta$  : -60 52 44.9

Center coordinates :

$\alpha$  : 11 02 48.58

$\delta$  : -60 52 44.8

Plate reference :

Origin : CDS HIPs Network

Plate : MAMA srcj

Pixel : 0.40 "/pix

Contour levels (counts) :

--- 3.33E+01    --- 3.75E+01

--- 4.44E+01    --- 5.22E+01

XMM SSC

May 2 10:07:58 2019