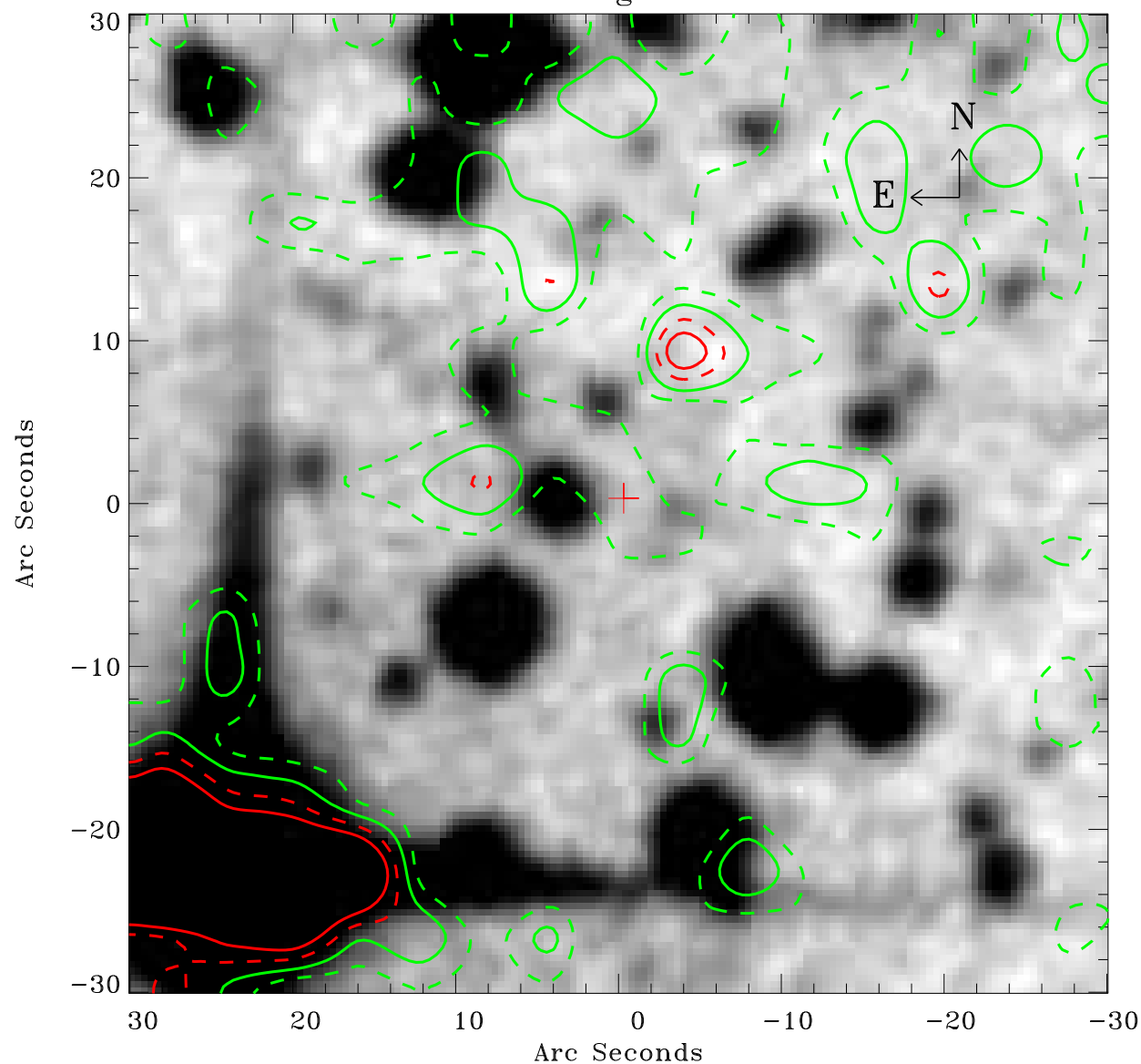


# EPIC source finding chart ACDS V10.0



Principal Investigator :

Dr Werner Becker

XMM target name :

MSH 11-61A

OBS ID : 152570101

Source number : 17

X-ray coordinates :

$\alpha$  : 11 02 26.69

$\delta$  : -60 48 32.7

Center coordinates :

$\alpha$  : 11 02 26.68

$\delta$  : -60 48 32.7

Plate reference :

Origin : CDS HIPs Network

Plate : MAMA srcj

Pixel : 0.40 "/pix

Contour levels (counts) :

1.10E+01 1.32E+01

1.58E+01 1.82E+01

XMM SSC

May 2 10:07:45 2019