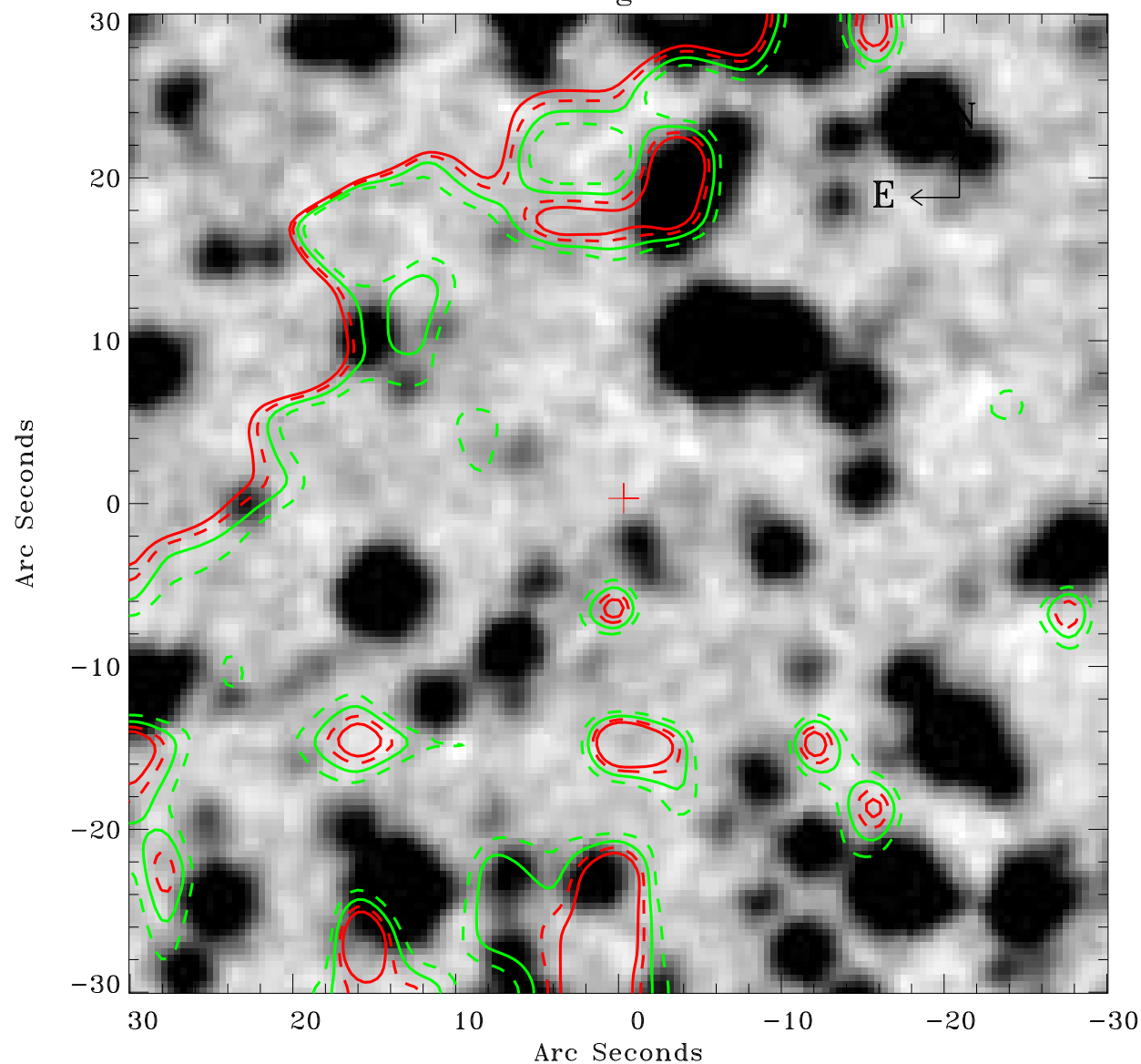


# EPIC source finding chart ACDS V10.0



Principal Investigator :

Dr Werner Becker

XMM target name :

MSH 11-61A

OBS ID : 152570101

Source number : 21

X-ray coordinates :

$\alpha$  : 11 02 28.79

$\delta$  : -60 56 52.8

Center coordinates :

$\alpha$  : 11 02 28.78

$\delta$  : -60 56 52.7

Plate reference :

Origin : CDS HIPs Network

Plate : MAMA srcj

Pixel : 0.40 "/pix

Contour levels (counts) :

1.24E+01 1.33E+01

1.41E+01 1.47E+01

XMM SSC

May 2 10:07:46 2019