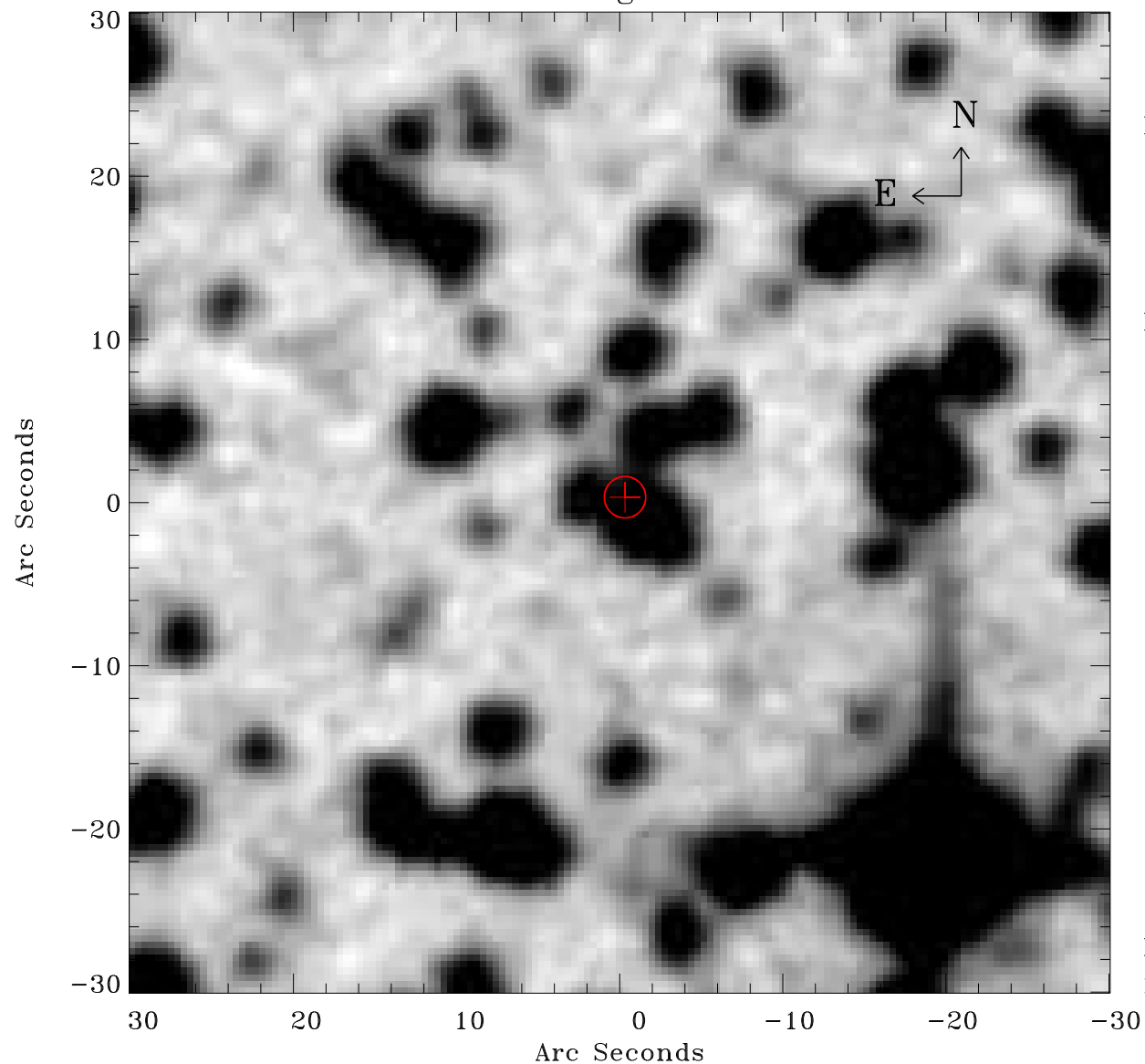


# EPIC source finding chart ACDS V10.0



Principal Investigator :

Dr Werner Becker

XMM target name :

MSH 11-61A

OBS ID : 152570101

Source number : 25

X-ray coordinates :

$\alpha$  : 11 02 50.26

$\delta$  : -61 06 10.7

Center coordinates :

$\alpha$  : 11 02 50.25

$\delta$  : -61 06 10.6

Plate reference :

Origin : CDS HIPs Network

Plate : MAMA srcj

Pixel : 0.40 "/pix

Error circle :

$R_{90}$  (") : 1.3

XMM SSC

May 2 10:08:01 2019