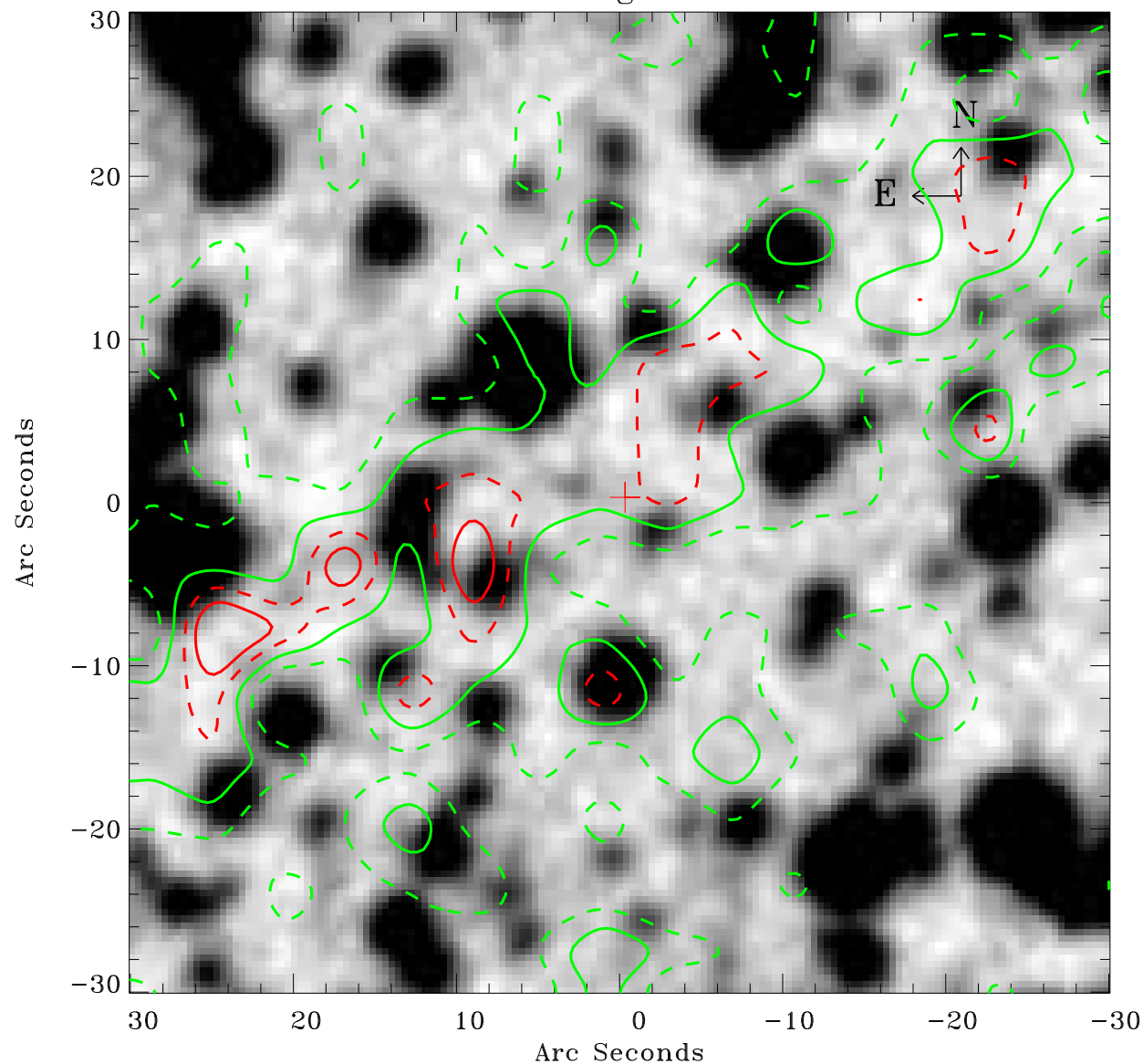


EPIC source finding chart ACDS V10.0



Principal Investigator :

Dr Werner Becker

XMM target name :

MSH 11-61A

OBS ID : 152570101

Source number : 40

X-ray coordinates :

α : 11 01 32.50

δ : -61 00 14.3

Center coordinates :

α : 11 01 32.49

δ : -61 00 14.3

Plate reference :

Origin : CDS HIPs Network

Plate : MAMA srcj

Pixel : 0.40 "/pix

Contour levels (counts) :

4.36E+00 6.00E+00

7.65E+00 9.10E+00

XMM SSC

May 2 10:07:16 2019