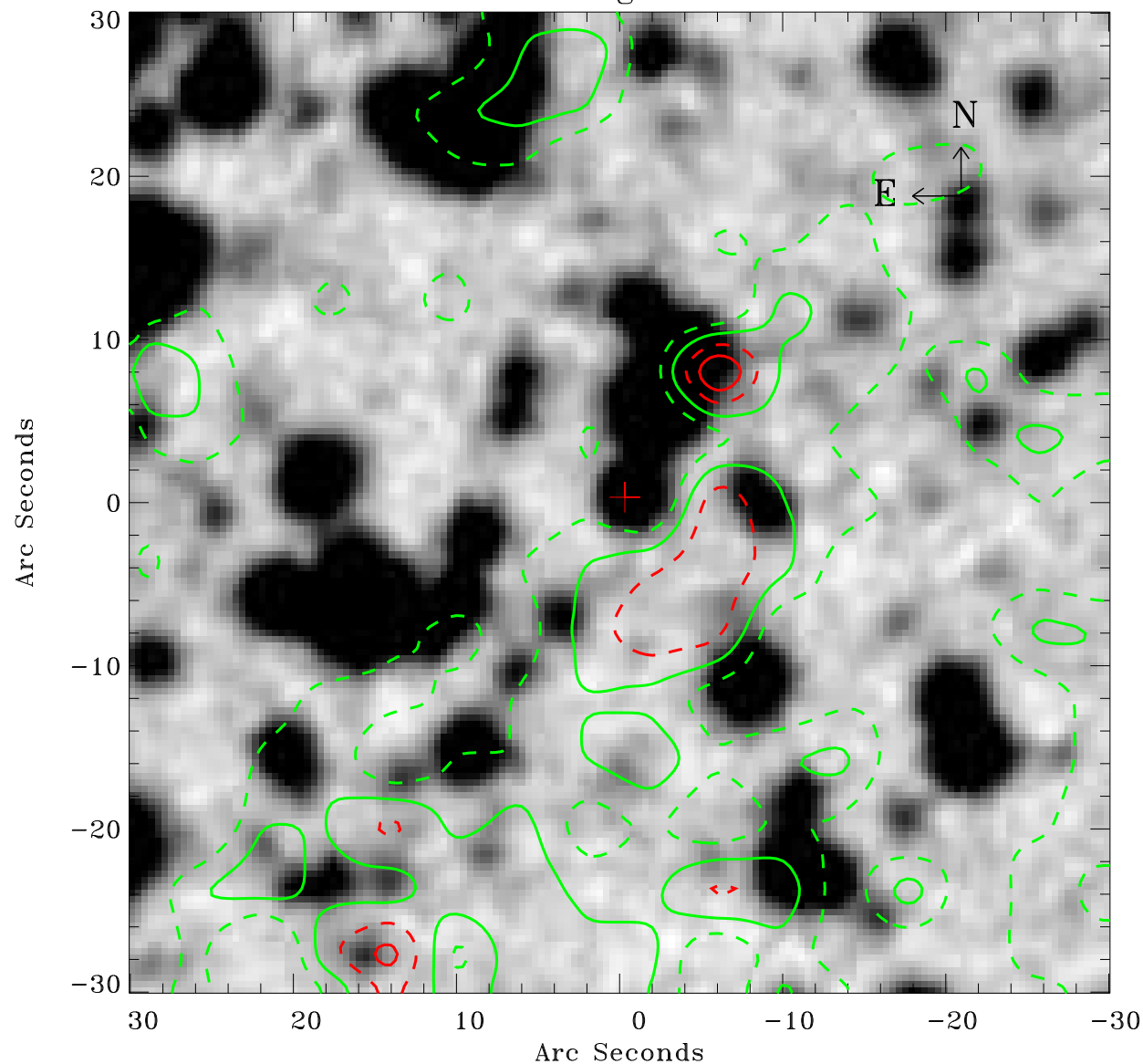


# EPIC source finding chart ACDS V10.0



Principal Investigator :

Dr Werner Becker

XMM target name :

MSH 11-61A

OBS ID : 152570101

Source number : 63

X-ray coordinates :

$\alpha$  : 11 03 30.47

$\delta$  : -60 51 31.4

Center coordinates :

$\alpha$  : 11 03 30.45

$\delta$  : -60 51 31.3

Plate reference :

Origin : CDS HIPs Network

Plate : MAMA srcj

Pixel : 0.40 "/pix

Contour levels (counts) :

7.20E+00 9.40E+00

1.19E+01 1.43E+01

XMM SSC

May 2 10:08:29 2019