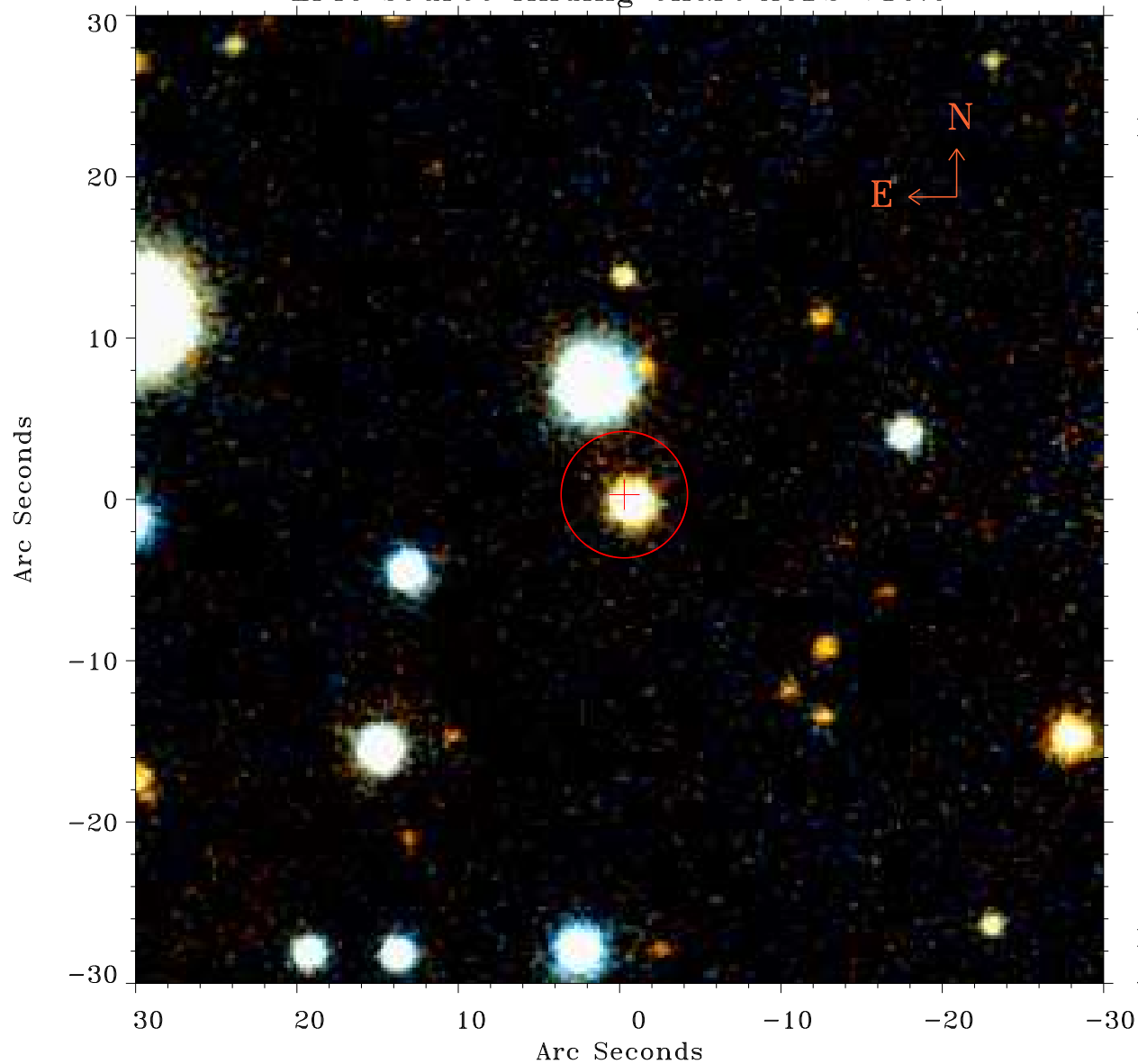


# EPIC source finding chart ACDS V10.0



Principal Investigator :

Mr Naohisa Anabuki

XMM target name :

IRAS 06269-0543

OBS ID : 153100601

Source number : 12

X-ray coordinates :

$\alpha$  : 06 28 46.11

$\delta$  : -05 45 06.2

Center coordinates :

$\alpha$  : 06 28 46.12

$\delta$  : -05 45 06.3

Plate reference :

Origin : PanSTARRS-DR1

Color coding :

z band ●

(z+g)/2 ●

g band ●

Error:

R90 : 3.9 arsec

XMM SSC

Apr 25 11:38:08 2019