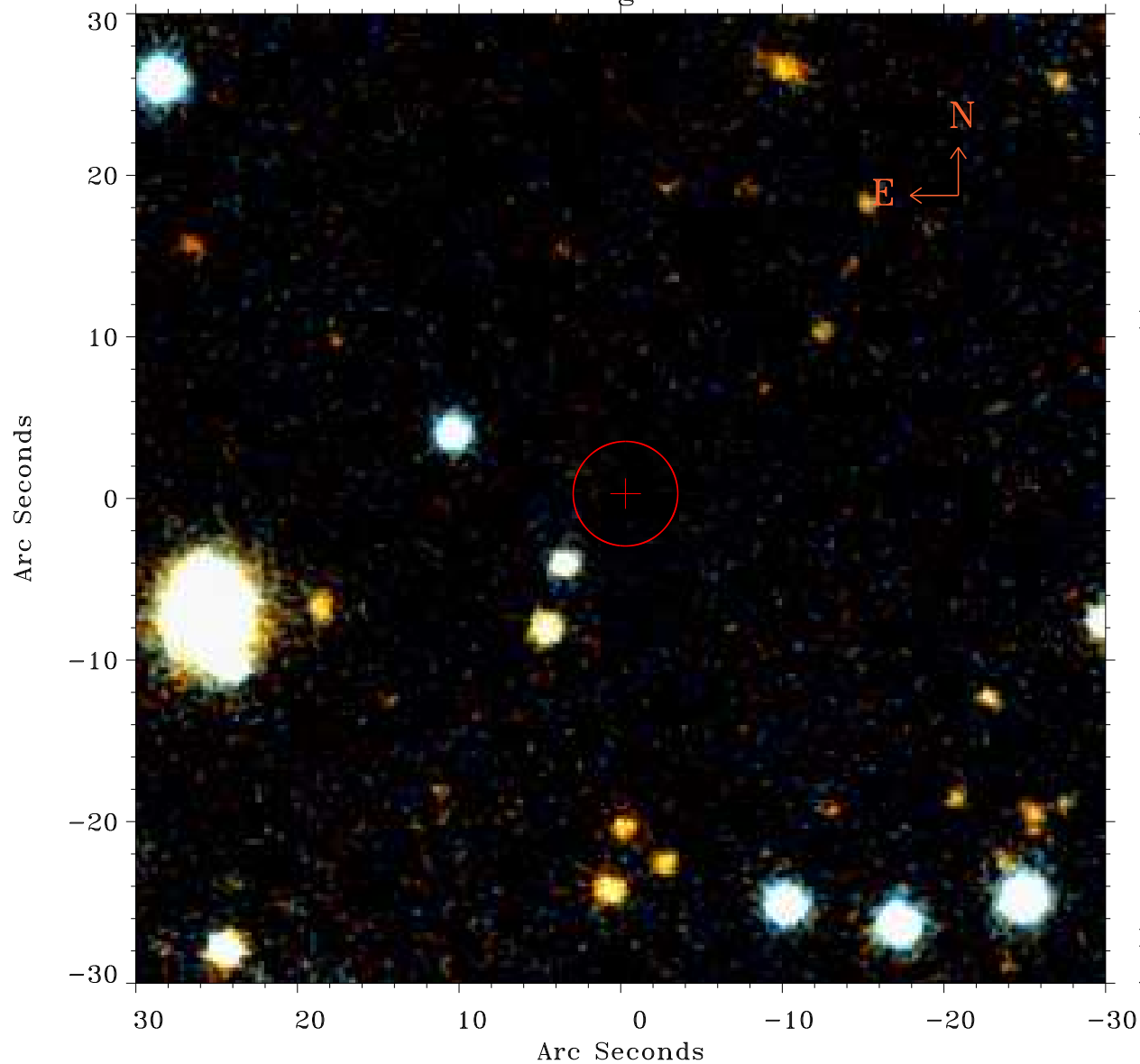


# EPIC source finding chart ACDS V10.0



Principal Investigator :

Mr Naohisa Anabuki

XMM target name :

IRAS 06269-0543

OBS ID : 153100601

Source number : 13

X-ray coordinates :

$\alpha$  : 06 29 18.07

$\delta$  : -05 40 35.7

Center coordinates :

$\alpha$  : 06 29 18.07

$\delta$  : -05 40 35.8

Plate reference :

Origin : PanSTARRS-DR1

Color coding :

z band ●

(z+g)/2 ●

g band ●

Error:

R90 : 3.2 arcsec

XMM SSC

Apr 25 11:38:39 2019